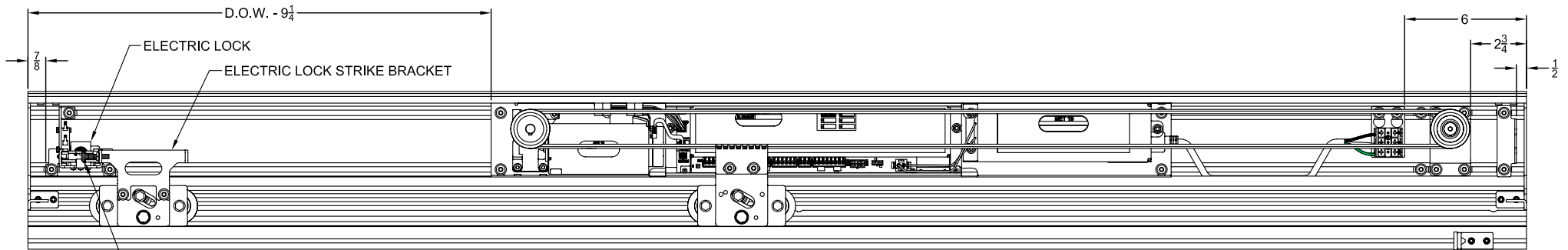


SINGLE SLIDE UNITS

- | | |
|------------|--------------------|
| 5101 O-SX | 5111 SX-SO/SO |
| 5105 SX-SO | 5113 P/SX-SO |
| 5107 P-SX | 5117 SX-P (R.B.O.) |

HAMMER HEAD BOLT AND LOCK NUT
SEE VIEW A-A ON SHT. 2 FOR ADDITIONAL DETAIL

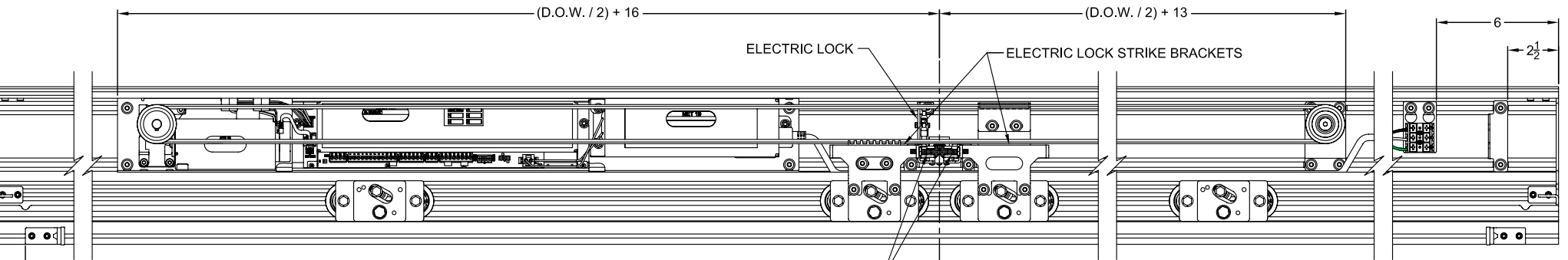


SINGLE SLIDE UNITS

- | | |
|------------|--------------------|
| 5102 SX-O | 5110 SO/SO-SX |
| 5104 SO-SX | 5114 SX-SO/P |
| 5108 SX-P | 5116 P-SX (R.B.O.) |

SEE VIEW B-B ON SHT. 2 FOR ADDITIONAL DETAIL

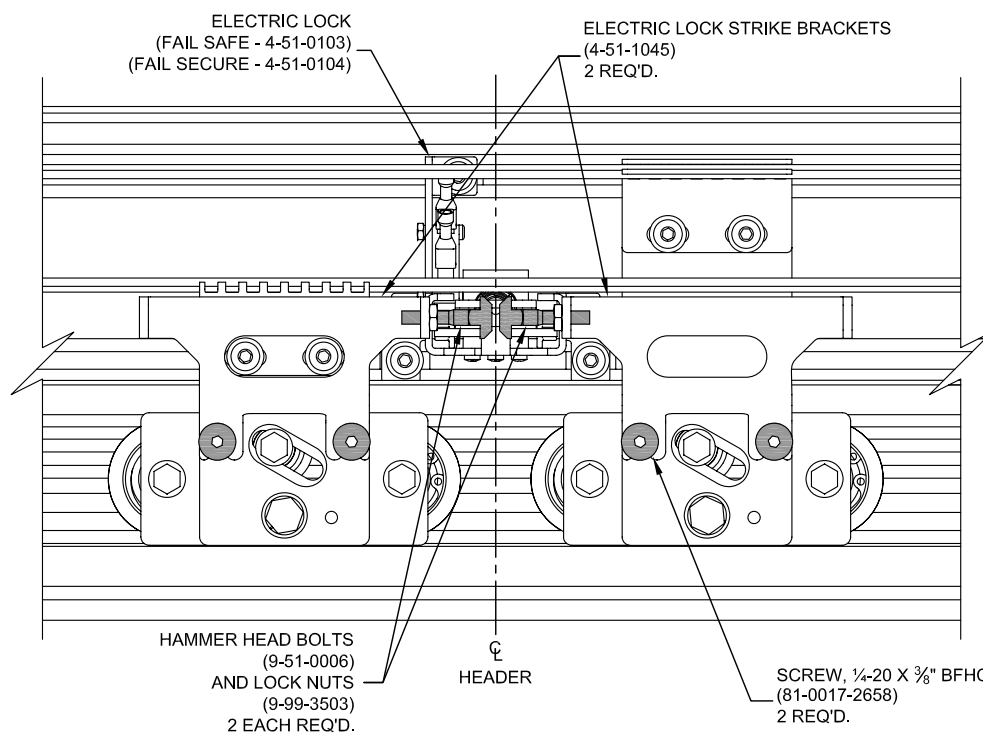
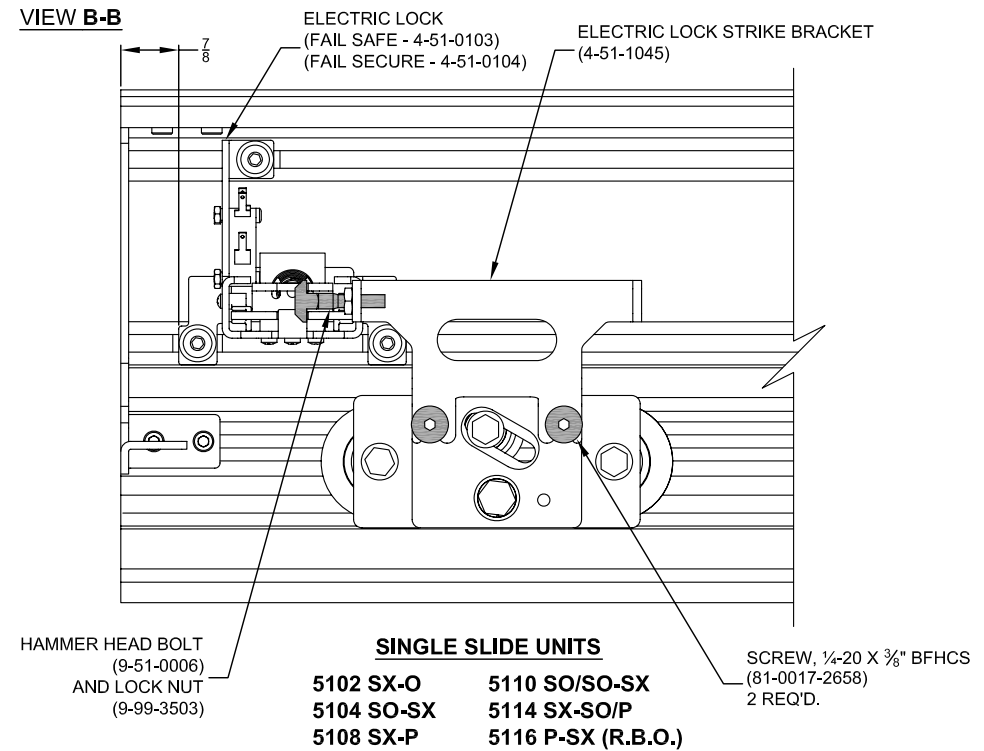
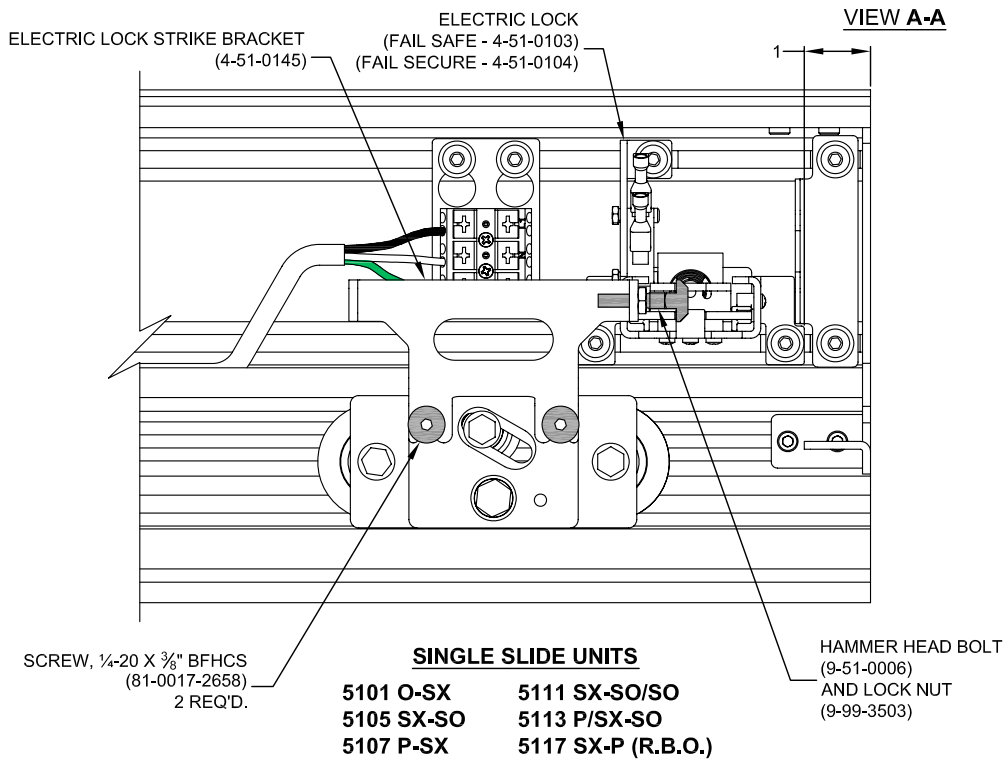
1/8 (NARROW STILE)
3/8 (MEDIUM STILE)



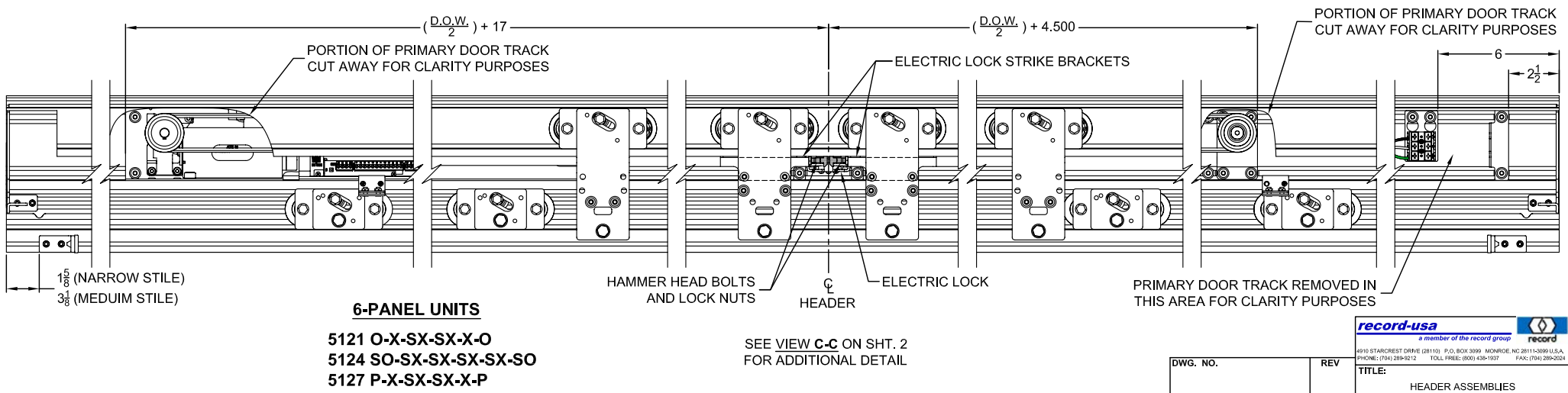
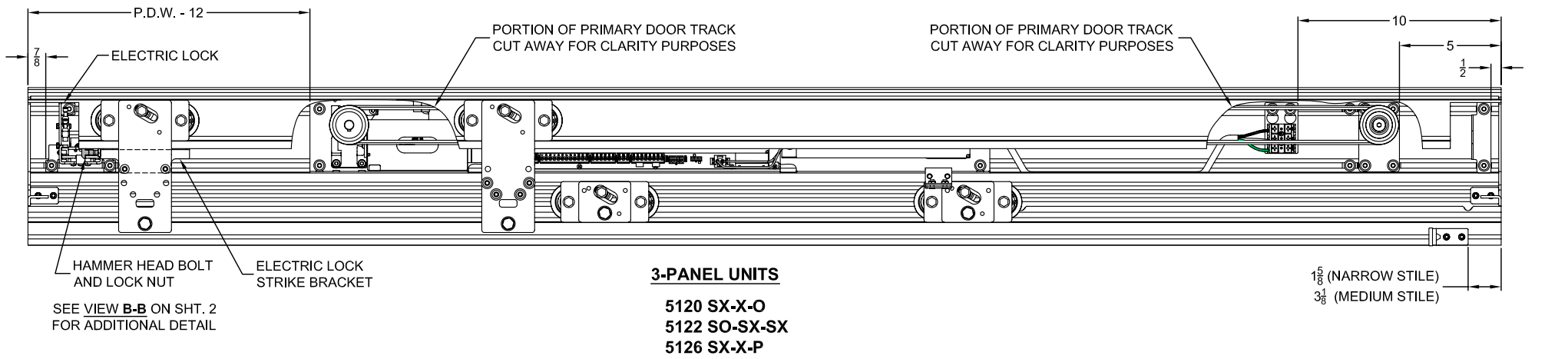
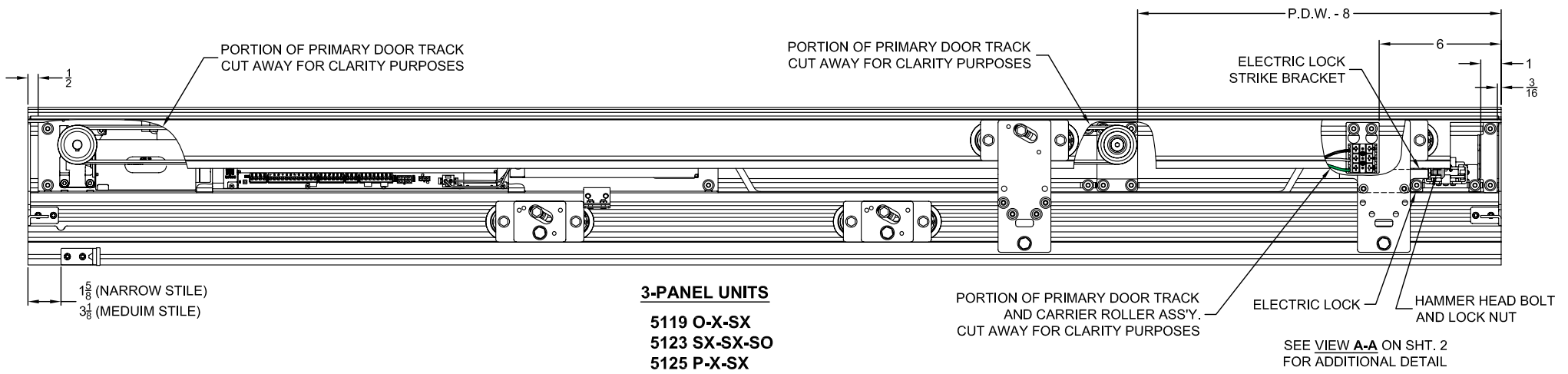
BIPART UNITS

- | | |
|------------------|-------------------------|
| 5103 O-SX-SX-O | 5112 SO/SO-SX-SX-SO/SO |
| 5106 SO-SX-SX-SO | 5115 P/SO-SX-SX-SO/P |
| 5109 P-SX-SX-P | 5118 P-SX-SX-P (R.B.O.) |

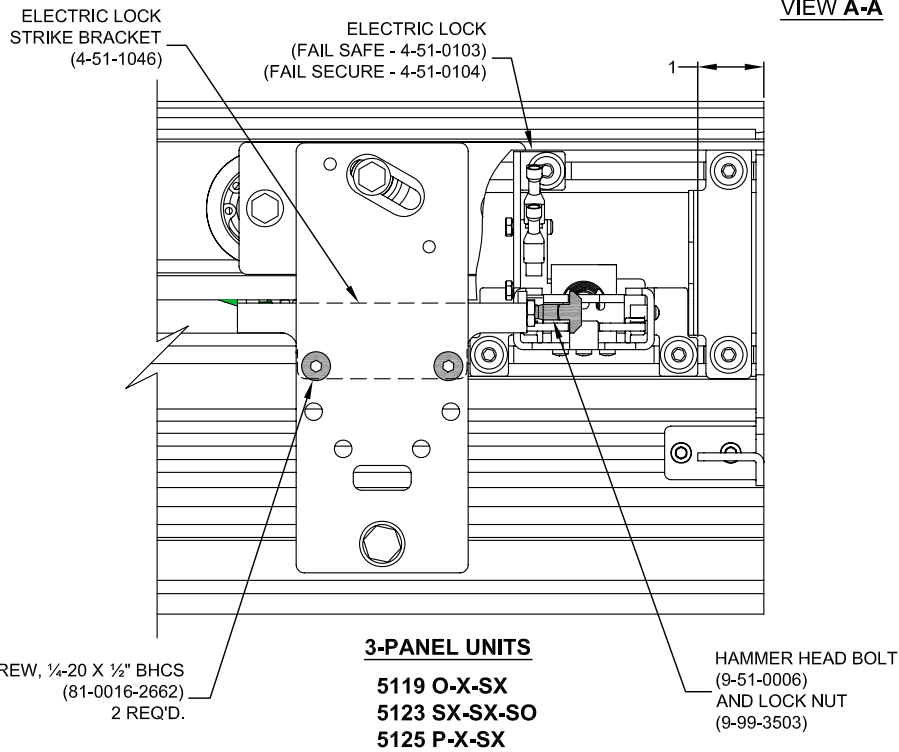
SEE VIEW C-C ON SHT. 2 FOR ADDITIONAL DETAIL



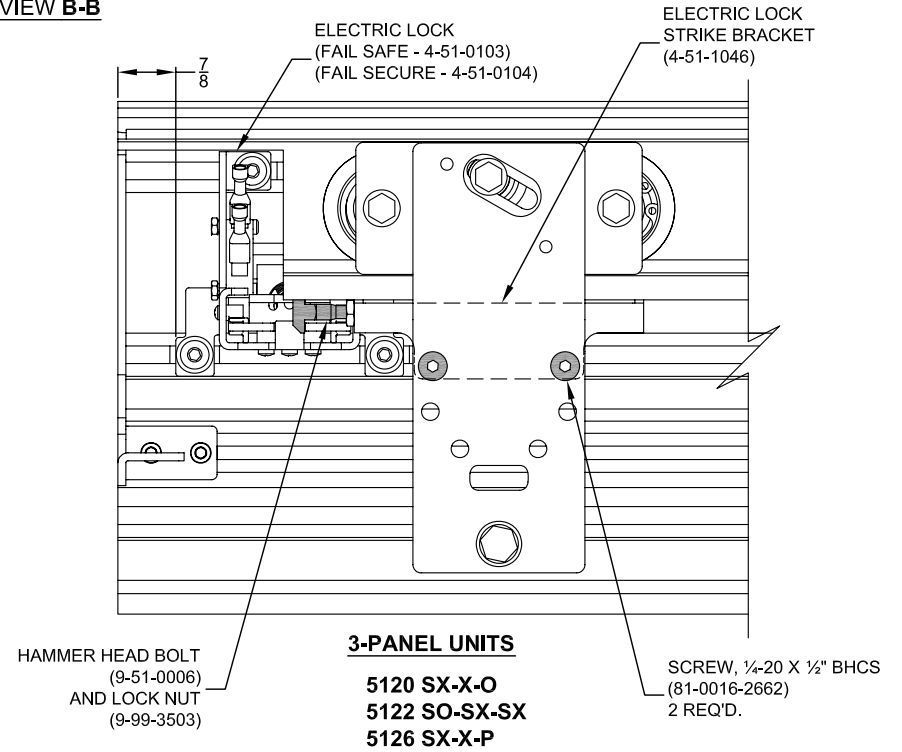
- BIPART UNITS**
- | | |
|------------------|-------------------------|
| 5103 O-SX-SX-O | 5112 SO/SO-SX-SX-SO/SO |
| 5106 SO-SX-SX-SO | 5115 P/SO-SX-SX-SO/P |
| 5109 P-SX-SX-P | 5118 P-SX-SX-P (R.B.O.) |



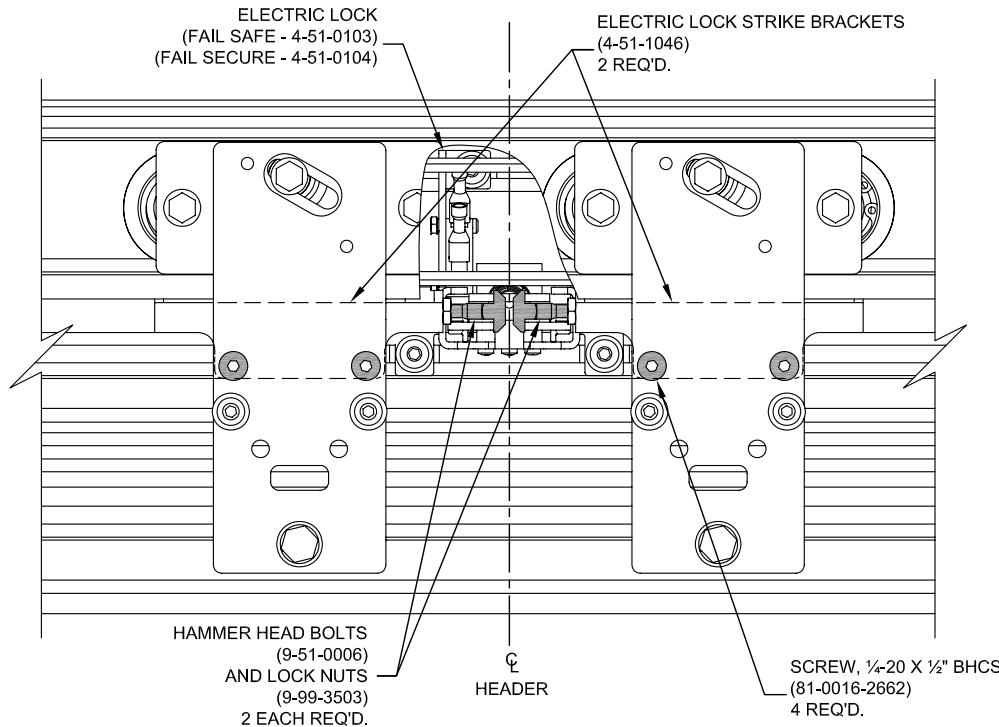
VIEW A-A



VIEW B-B



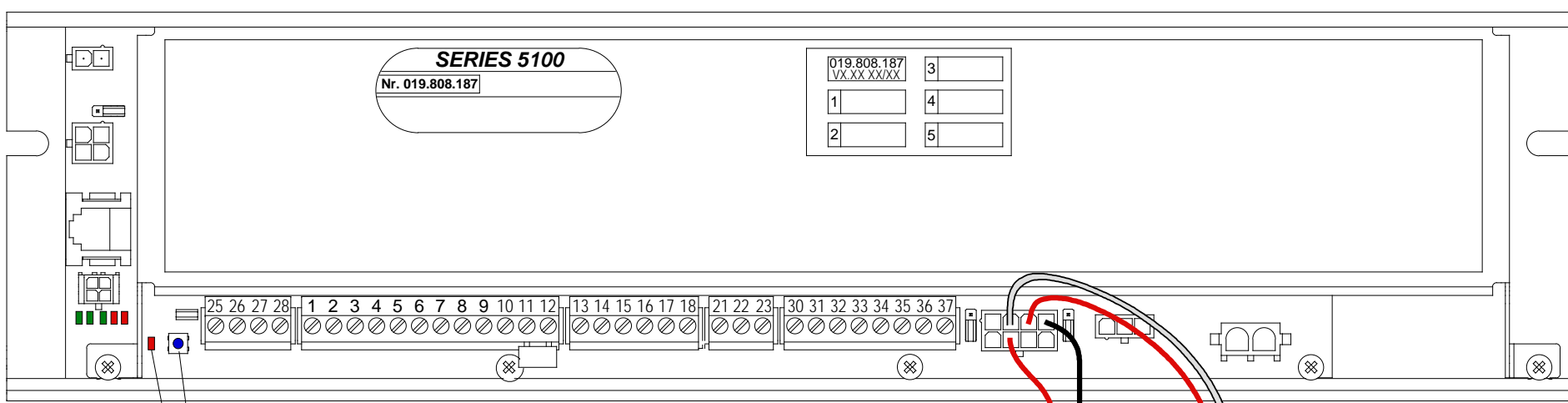
VIEW C-C



6-PANEL UNITS
5121 O-X-SX-SX-X-O
5124 SO-SX-SX-SX-SO
5127 P-X-SX-SX-X-P



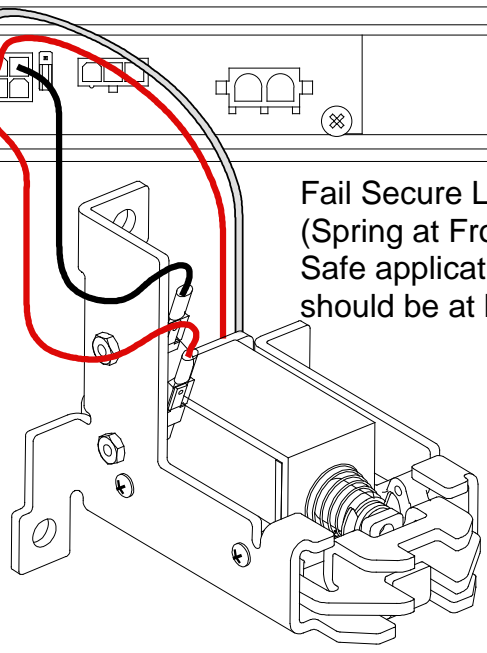
DWG. NO.	REV	TITLE:
SCALE: 1:1	SHEET 2 OF 2	HEADER ASSEMBLIES 3-PANEL AND 6-PANEL TELESCOPE UNITS



Control LED
Control Switch

Connect the automatic lock to its dedicated connector on the door control as shown at right. Install the lock in the header, mount the lock bracket(s) complete with hammer-head bolts on the top wheel carriage assemblies, and mechanically adjust for proper clearances and operation.

Press and hold the blue Control Switch for 4 flashes of the red Control LED, then release. The first screen at right should appear on the jamb-mounted Display Control Panel. Scroll down (using the AUTO/+ key) to "Locking" and select it using the key; select "Lock Function", then scroll down and select (using the key) the desired function - "Night Locked", "1Way Locked", or "Always Locked". Press the "PROG" key once, then scroll down and select "Lock Type". Scroll down to and select the appropriate lock type - "Fail Secure" or "Fail Safe". Press the "PROG" key multiple times until the panel displays "Quit Menu?", then press the key to return to normal operating mode control.



Parameter
 Driving cycle
 Time delayopen
 Drive

Parameter
 Entrance system
 Control panel
 Locking

Locking
 Lock Function
 Lock Type

Lock Function
 Night Locked
 1Way Locked
 Always Locked

Lock Type
 Magnet
 Fail Secure
 Fail Safe

Series 5100 - Configuring Automatic Locks

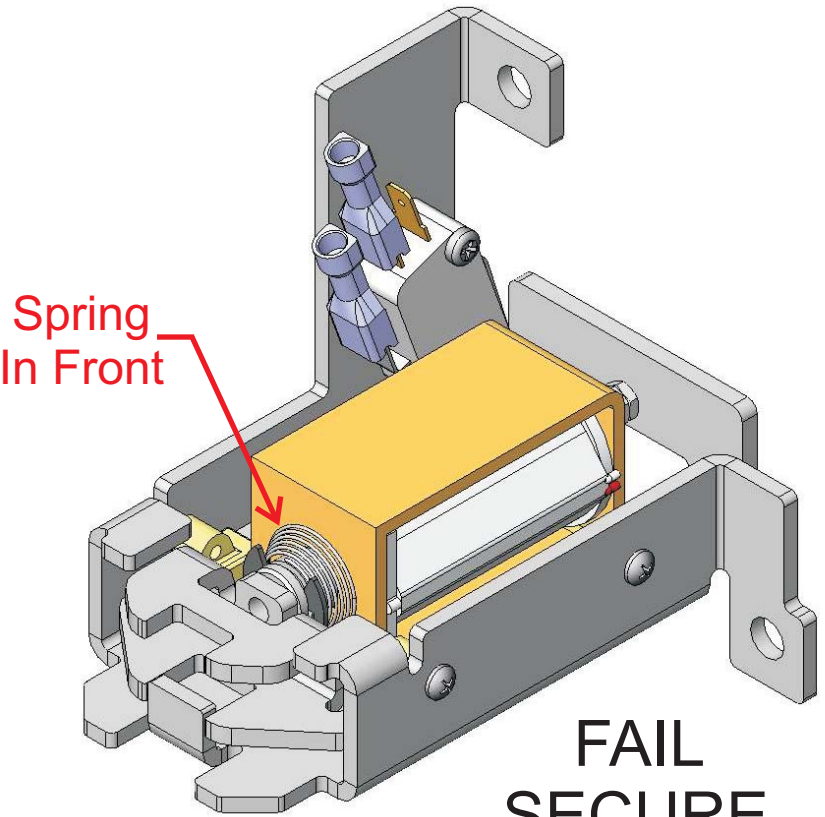




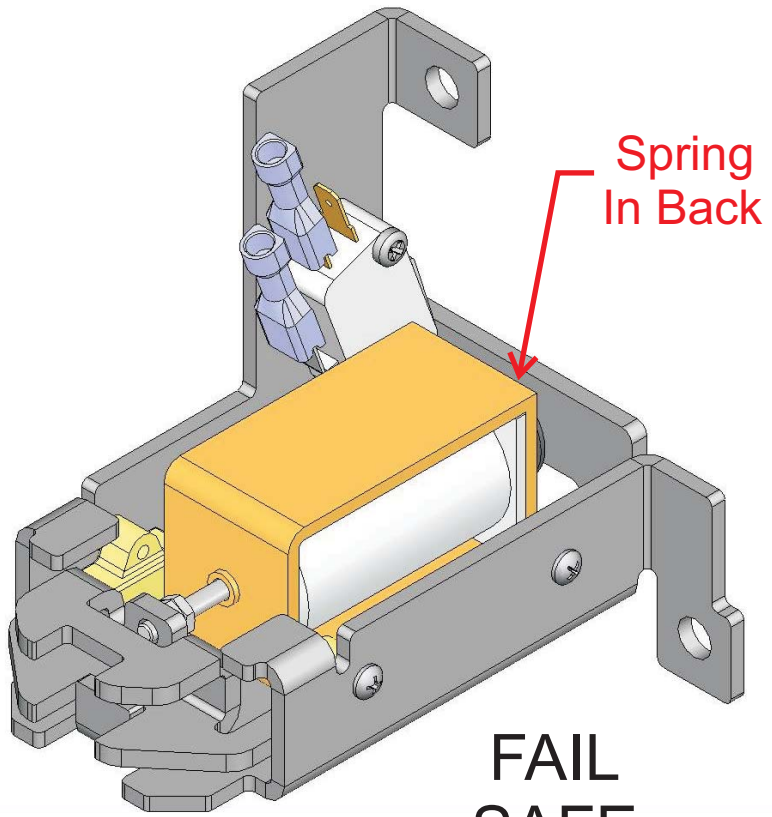
record-USA
 4324 Phil Hargett Ct.
 Monroe, NC 28110
 (704) 289 - 9212

SERIES 5100 ELECTRIC LOCK
SOLENOID CONFIGURATION - FAIL SAFE/FAIL SECURE

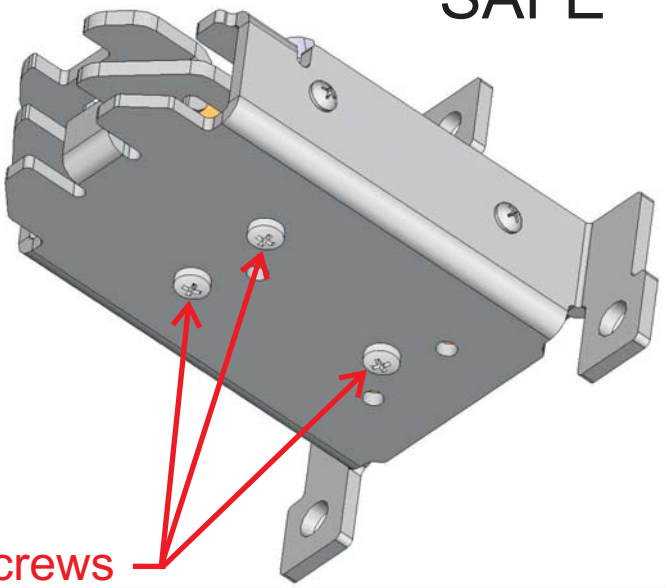
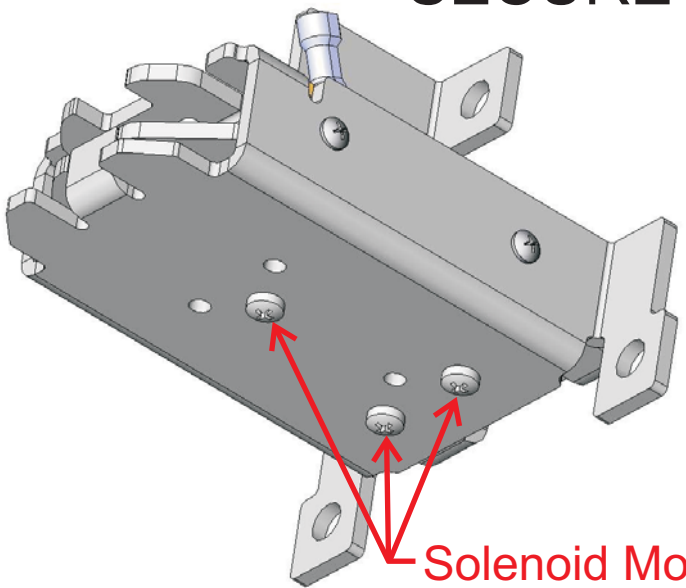
OCT'06



**FAIL
 SECURE**



**FAIL
 SAFE**



Solenoid Mounting Screws