

DORMA



ED-700



# LOW ENERGY AUTOMATIC SWING DOOR

## INSTALLATION AND INSTRUCTION MANUAL

Distributed by:



## CONTENTS

Page 2	Tools Required
Page 3	Hanging Then Door
Page 4	Exploded View of the Operator
Page 5	Bill of Material for the Operator
Page 6	Exploded View of Header and Control
Page 7	Arm Styles
Page 8	Mounting the Header
Page 9	Mounting the Operator
Page 10	Mounting the Control
Page 11	Installing the Three Position Switch
Page 12	Mounting the Push Arm (Scissor)
Page 13	Mounting the Pull Arm (Scissor)
Page 14	Mounting the Pull Arm (Track)
Page 15	Wiring the Unit
Page 16	Micro Switch and Cam Settings
Page 17	Labels and Safety Check

## TOOLS REQUIRED:

### Screwdrivers

Small straight (flat Blade) - for terminal block wiring

#2 Phillips (Cross Point) - for various #8, #10, & # 14 screws

### Wrench

9/16" Socket Wrench - for arm attachment

### Electric Drill

### Level

### Step Ladder

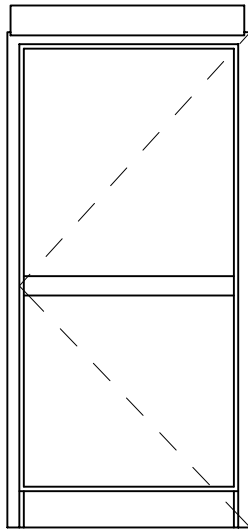
### Tape Measure

Electrical Wire stripper /cutters - for sensor wiring, (if applicable)

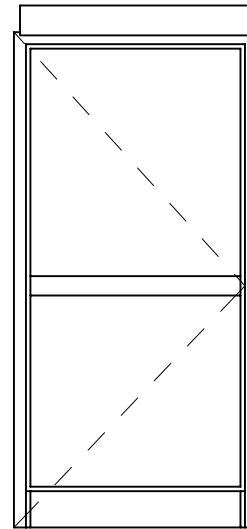
BEA Universal Remote Control - for sensor adjustment, (if applicable)

# HANGING THE DOOR

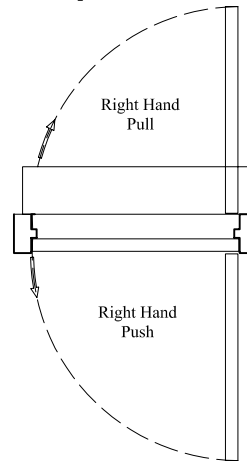
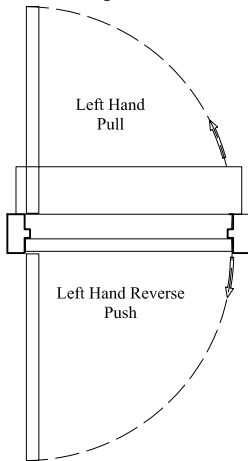
EXTERIOR  
ELEVATION



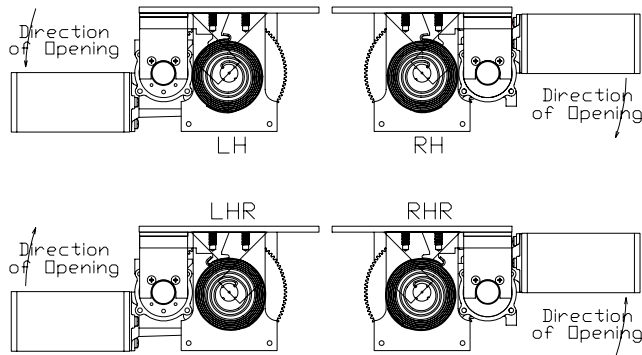
Single Door, LH



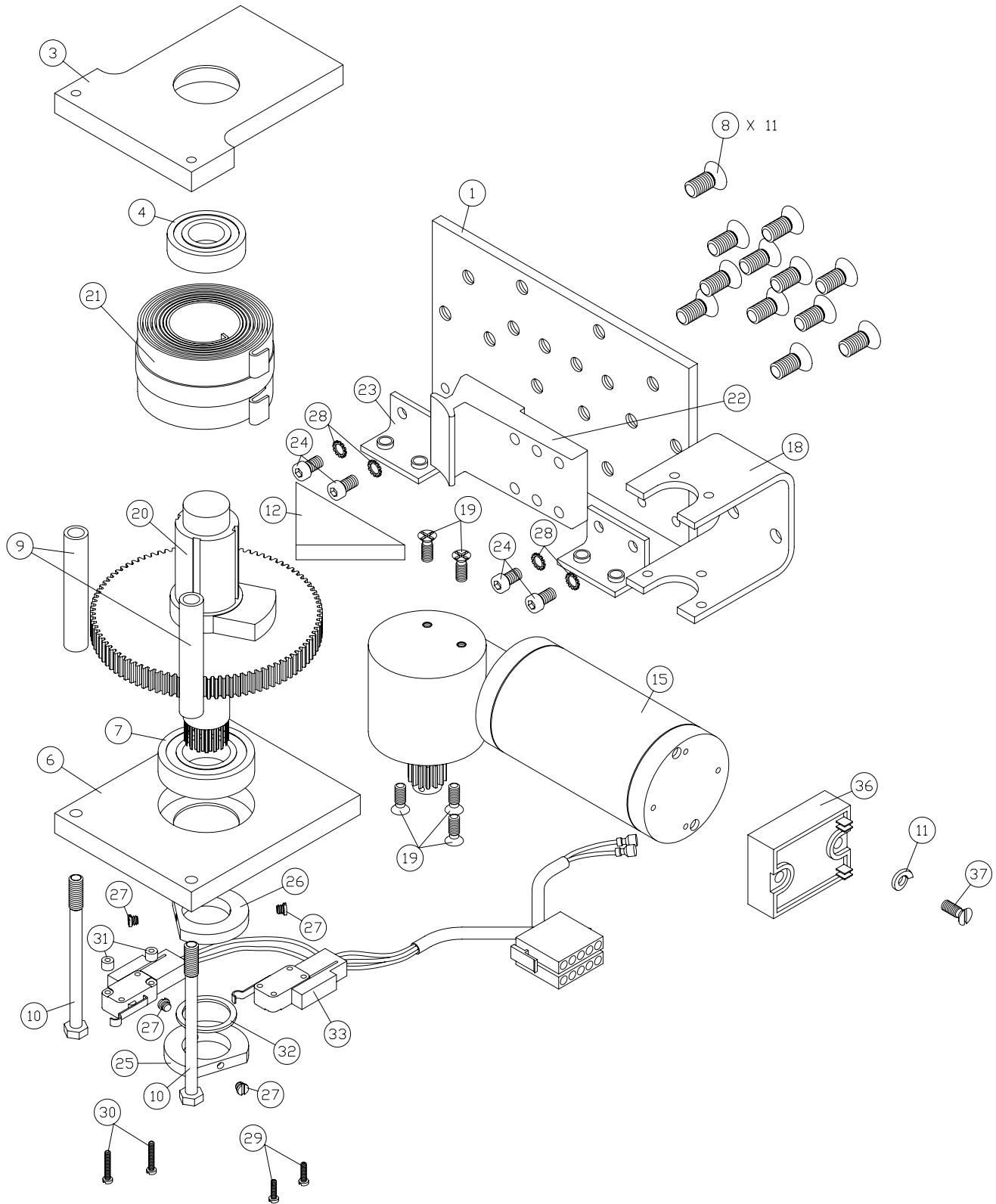
Single Door, RH



ED700 Hand & Swing Layouts  
(as viewed looking down on top of operator)



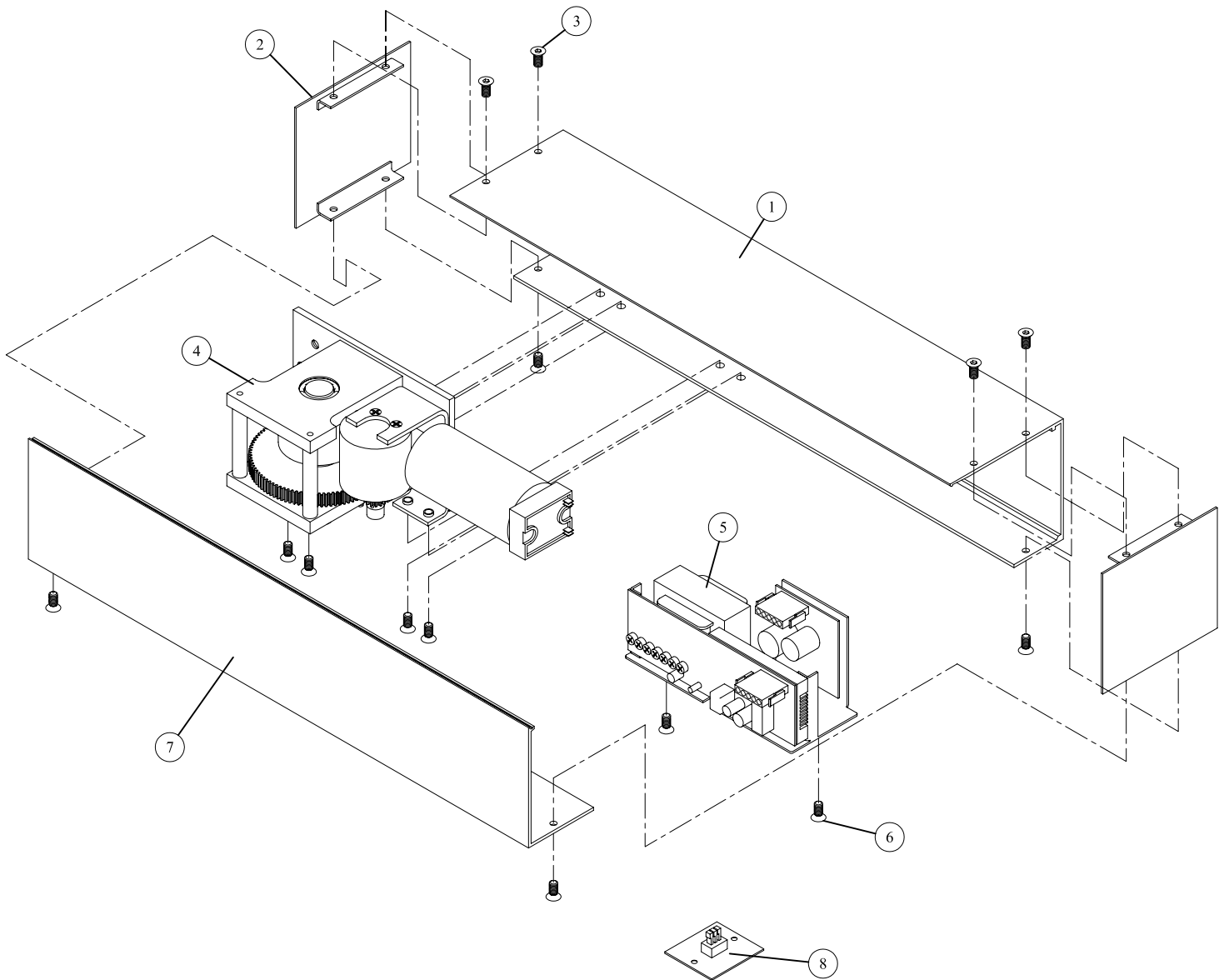
# Exploded View Of Operator



## Parts List For ED700 Header Assembly

Item	Part No.	Description	Quntantity
1	DC0886-010	Baseplate	1
2	DS0897-010	Assembly - Upper Bearing Plate	1
3		DC0891-01 (Upper Bearing Plate)	1
4		DC0884-01 Bearing	1
5	DS0898-010	Assymlby - Lower Bearing Plate	1
6		DC0889-01 (Lower Bearing Plate)	1
7		DC0885-01 Bearing	1
8	DF1365-01Z	Screw #5/16-18 X 3/4" FHSCS	11
9	DC1353-010	Spacer 0.334" 1/4-20 X 0.5" OD X 2.844" Alum.	2
10	DF1362-00Z	Screw #1/4-20 X 3.75" HHMS	2
11	DF0858-00Z	Lockwasher 1/4" SplitRing	1
12	DC1355-010	Fixed Stop	1
13	DS0895-010	Assembly-Motor/Gear Drive and Bracket	1
14		DS0894-01 Assembly Motor Gear Drive	1
15		DX1063-020 Motor Drive with Pinion Gear	1
18		DC0724-01Z Bracket, Steel Stamping	1
19		DF1363-01Z Screw #10-24 X 1/2" FHMS	5
20	DC0896-030	Output Shaft	1
21	DC0887-010	Closing Spring	1
22	DC0723-020	Spring Mount	1
23	DC0721-01Z	Operator Mounting Bracket	2
24	DF1366-01Z	Screw #1/4-20 X 7/16" SCS	4
25	DS0892-010	Assembly - Check Switch Cam	2
26		DC0722-01 Check Switch Cam - 1.75" Ø X 1/4"	2
27		DF1367-01Z Screw #10-24 X 3/16" SS	4
28	DF1295-01Z	Lockwasher 1/4" External Tooth	4
29	DF1369-01Z	Screw #4-40 X 1/2" BHMS	2
30	DF1370-01Z	Screw #4-40 X 3/4" BHMS	2
31	DF1371-010	Spacer - #4ID X 1/4"OD X 1/16"	2
32	DF1368-010	Washer 1"ID X 1.25"OD X 1/16"	1
33	DX1358-020	Assembly - Operator Harness	1
34		Cable none	1
35		Wire End none	1
36	DX1375-010	Close Speed Regulator	1
37	DF1455-01Z	Screw #10-24 X 1/2" BHMS	1

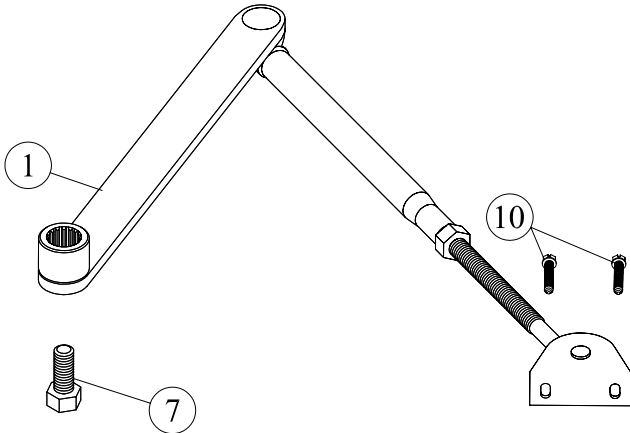
# Exploded View of Header and Control



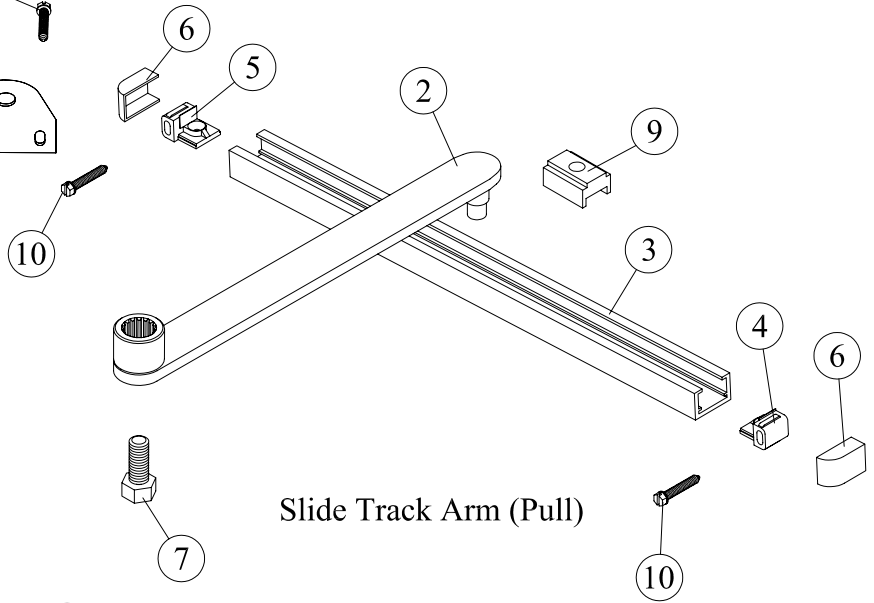
Item	Part No.	Description	Qty
1	DE0242-010	Header Back	1
2	DC1071-01C	End Cap	2
3	DF039-01Z	Screw	8
4	DS1085-010	Operator	1
5	DX1029-010	Controller	1
6	DF1359-01Z	Screw	2
7	DE0243-01A	Header Face Plate	1
8	DS1473-010	Three Position Switch	1

### ARM STYLES

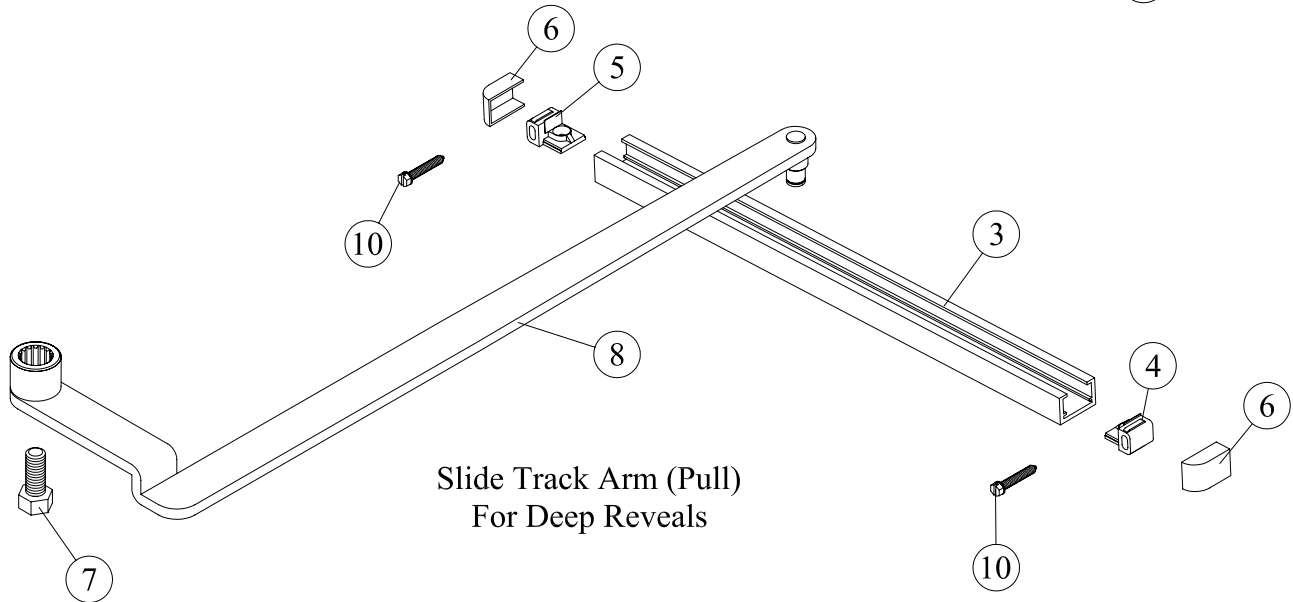
Item	Part No.	Description
1	DC0855-01A	Scissor Arm
2	DC0855-01C	Slide Track Arm
3	DC0851-01Z	Slide Track
4	DC0850-010	Track Mount Right Hand
5	DC0849-010	Track Mount Left Hand
6	DC0769-01C	Track End Cap
7	DF1153-01Z	$\frac{3}{8}$ -16 x $\frac{3}{4}$ Hex Head Bolt
8	DC1549-010	RH Slide Track Arm
	DC1562-010	LH Slide Track Arm
9	DC0770-010	Slide Track Arm Guide
10	DF0774-01Z	12 x $1\frac{1}{4}$ Hex Head Screw



Scissor Arm (Push & Pull)



Slide Track Arm (Pull)

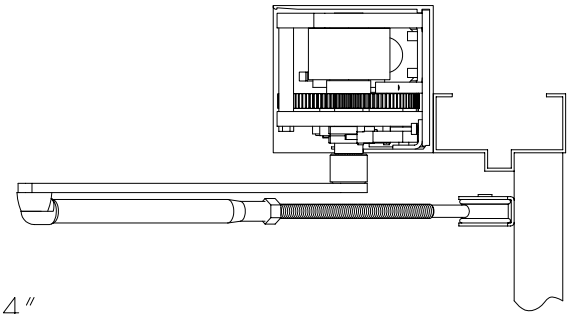
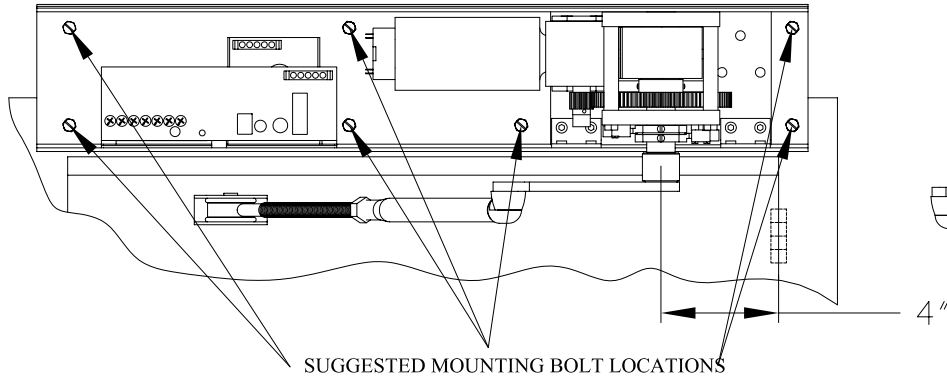


Slide Track Arm (Pull)  
For Deep Reveals

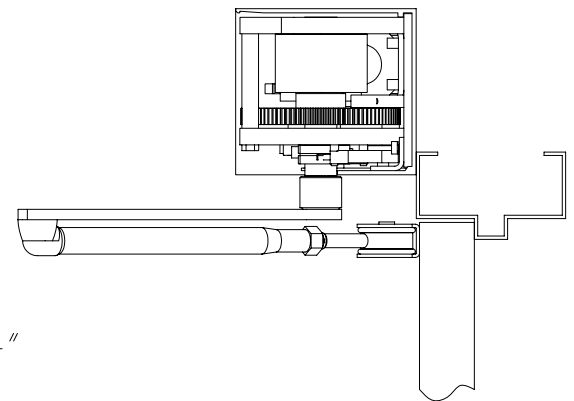
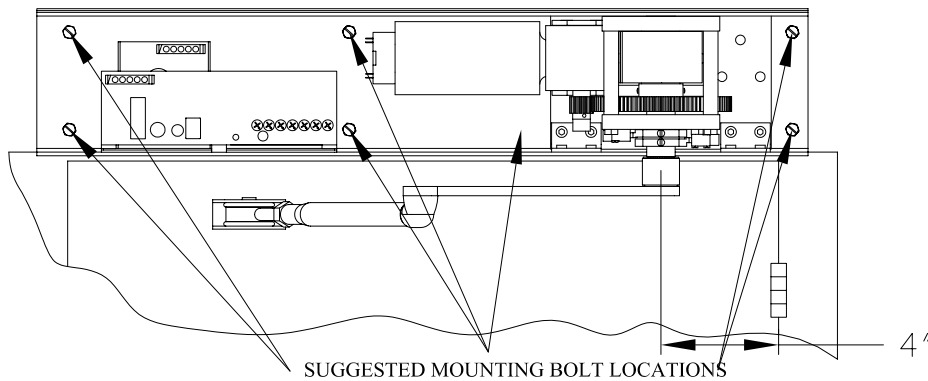


# MOUNTING THE HEADER

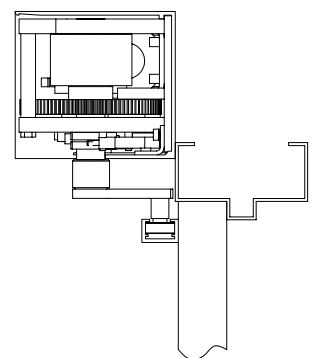
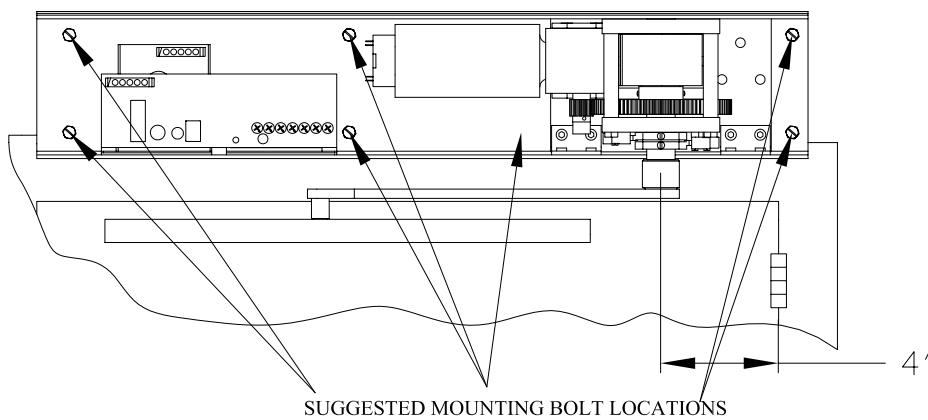
## PUSH ARM



## PULL ARM (SCISSOR)



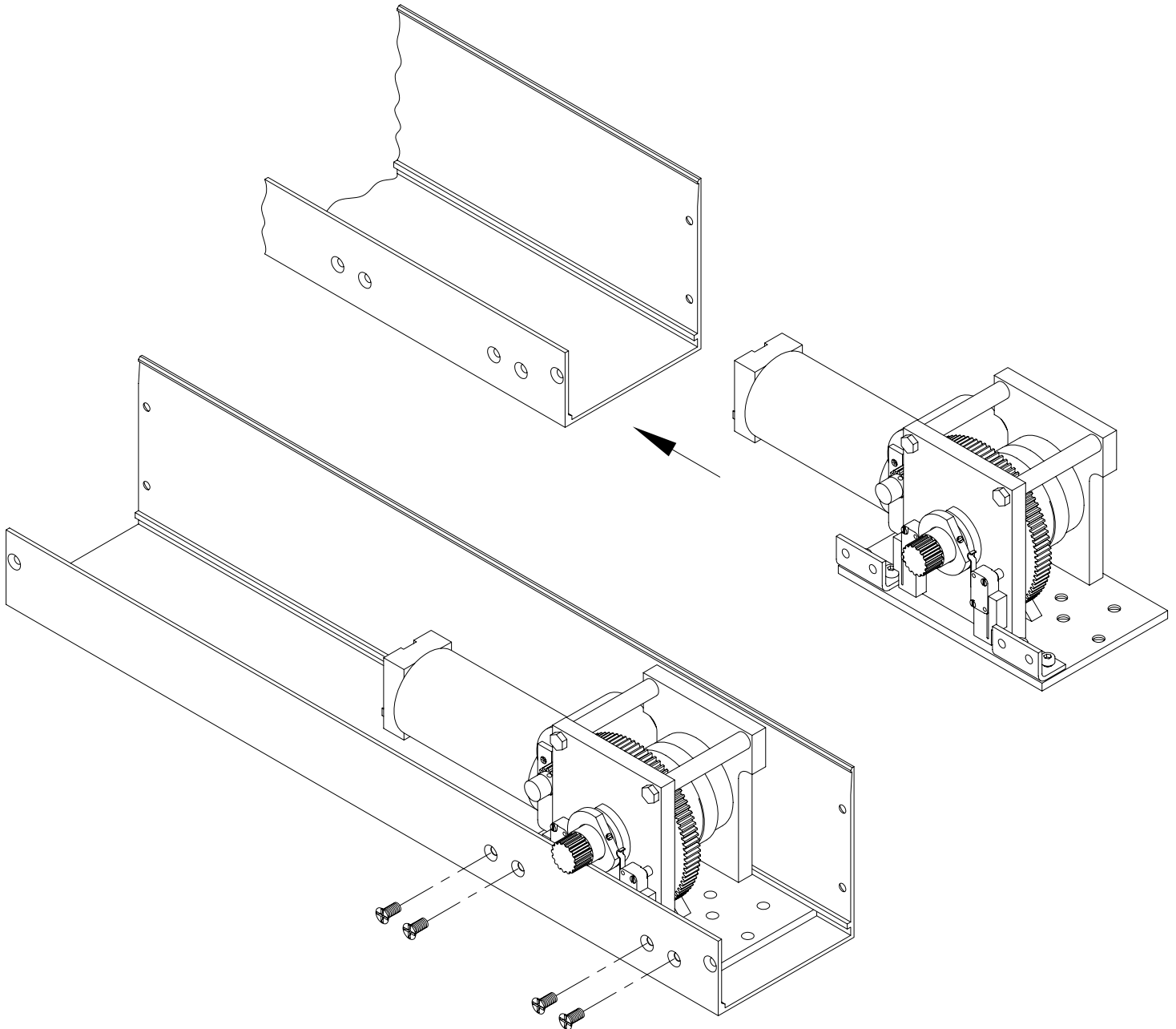
## PULL ARM TRACK



## MOUNTING THE OPERATOR

To install operator:

1. Slide operator through face of header profile until mounting bracket holes are aligned with corresponding holes in header backmember.
2. Apply four (4) #1/4-20 X 1/2" FH Screws

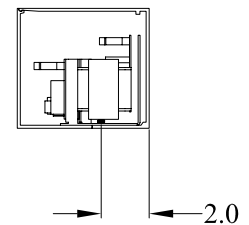
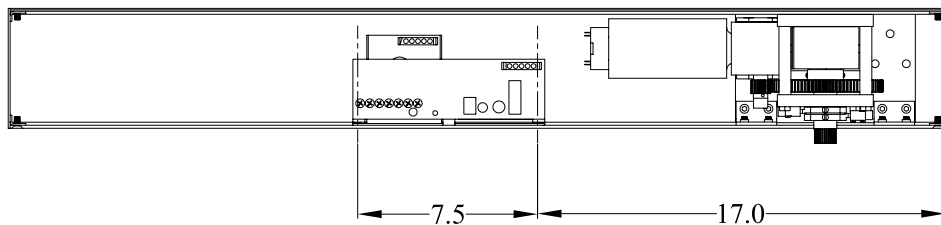
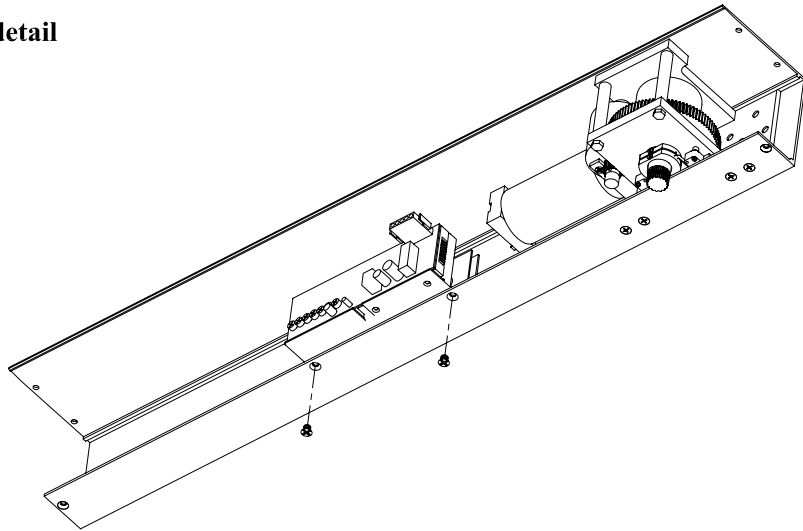


## MOUNTING THE CONTROL

Align holes in mounting bracket with corresponding holes in header back.

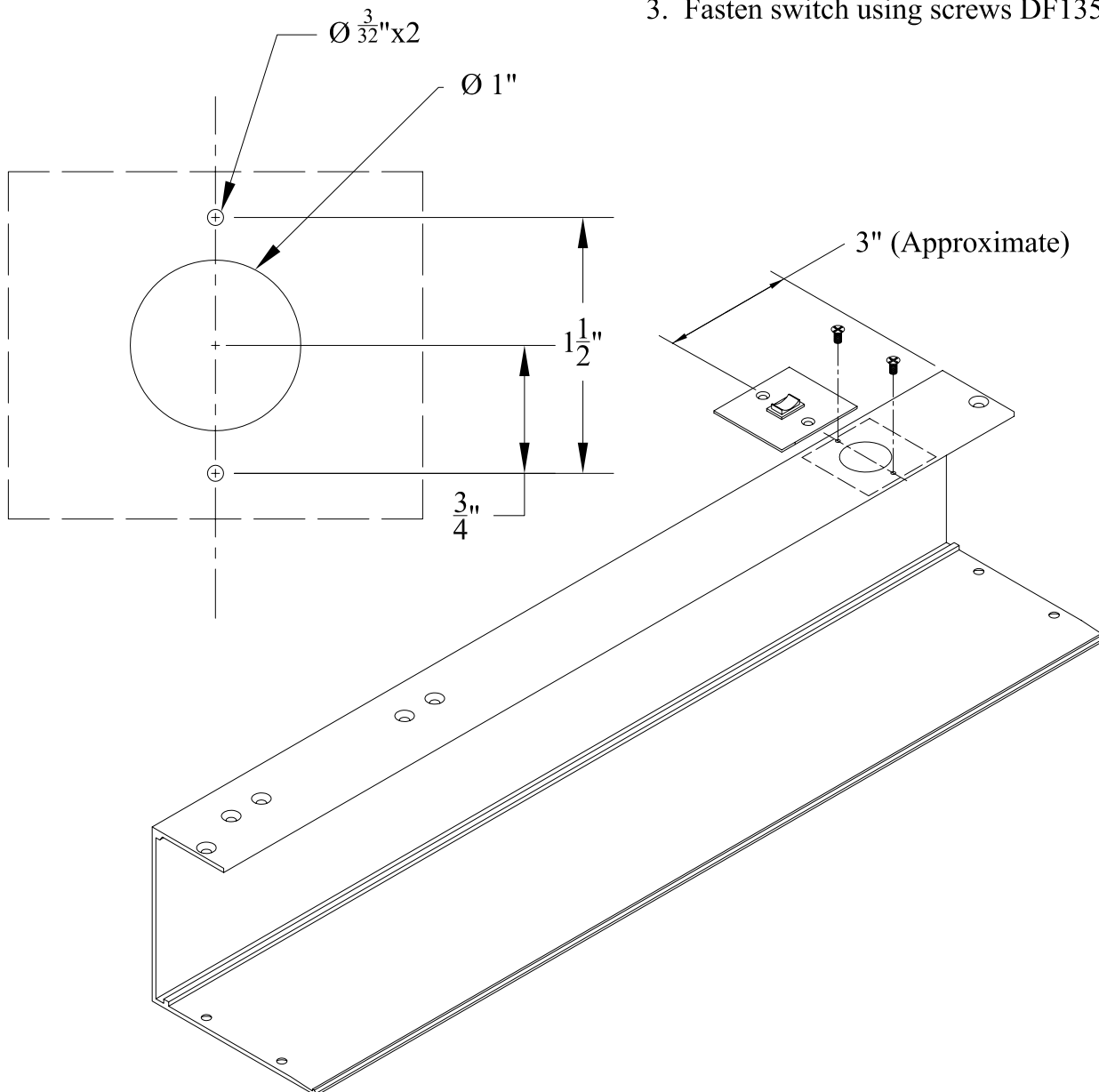
Fasten with screws DF1359-01Z.

See illustrations below for further detail

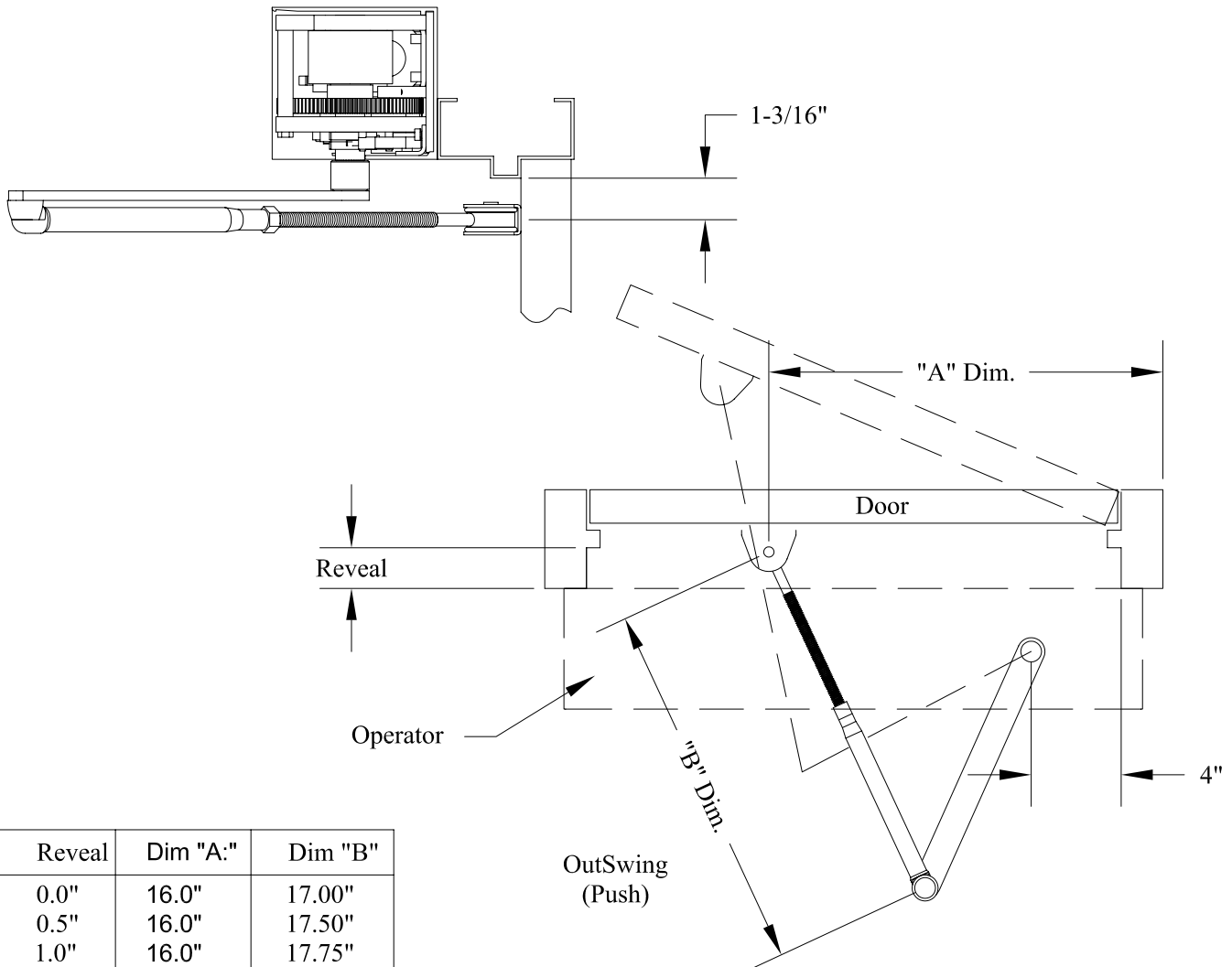


## Mounting The Three Position Switch

1. Drill holes per dimensions shown
2. Align holes with corresponding holes in header back or header face.
3. Fasten switch using screws DF1359-0Z1



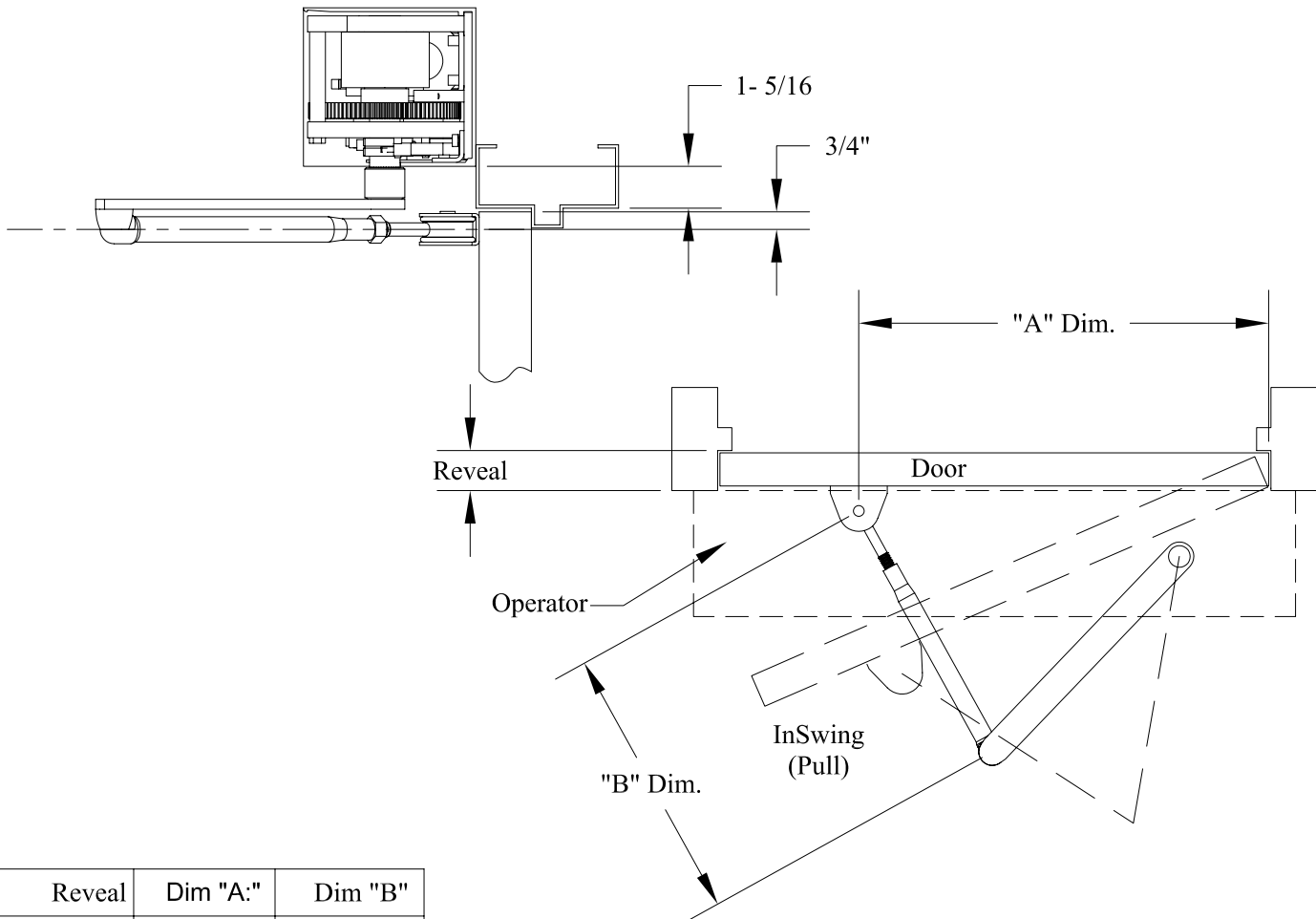
Mounting the Push Arm



Reveal	Dim "A:"	Dim "B"
0.0"	16.0"	17.00"
0.5"	16.0"	17.50"
1.0"	16.0"	17.75"
1.5"	16.0"	18.25"
2.0"	16.0"	18.75"
2.5"	16.5"	19.25"
3.0"	16.5"	19.75"
3.5"	16.5"	20.25"
4.0."	17.0"	20.75"
4.5"	18.0"	21.5"
5.0"	18.0"	22.75"
5.5"	18.0"	23.25"
6.0"	18.0"	23.75"

NOTE: Dimensions shown are approximate. After attaching the foot to the door at the dimension shown, open the door to 90°, actuate the operator and allow to rotate until stopping against the internal stop. With the adjustable arm set at the "B" dimension, install the drive arm on the operator shaft at the closest location allowed by the spline. Reset the adjustable arm to allow connection to the drive arm with the door at 90°.

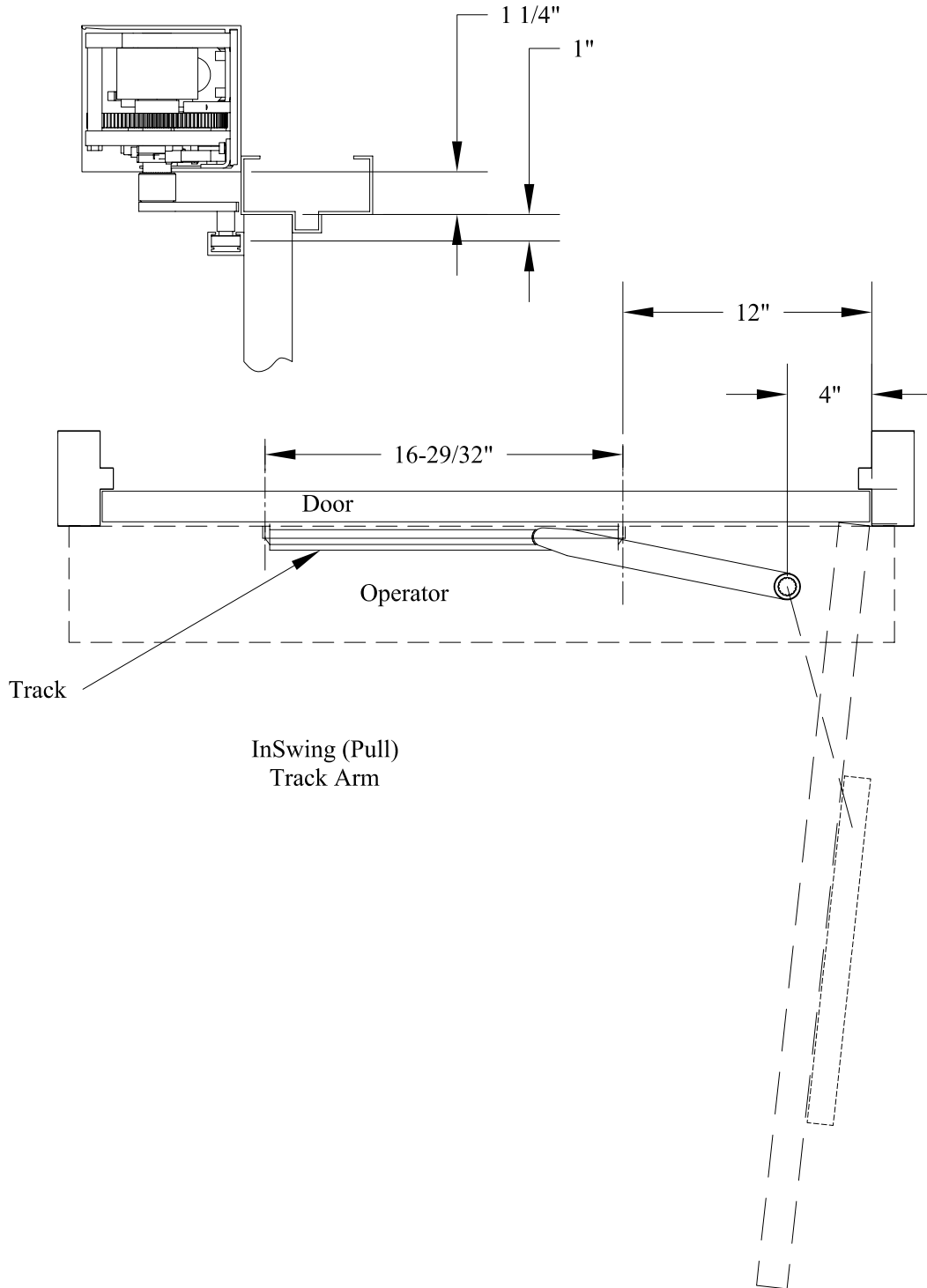
## MOUNTING THE PULL ARM (SCISSOR)

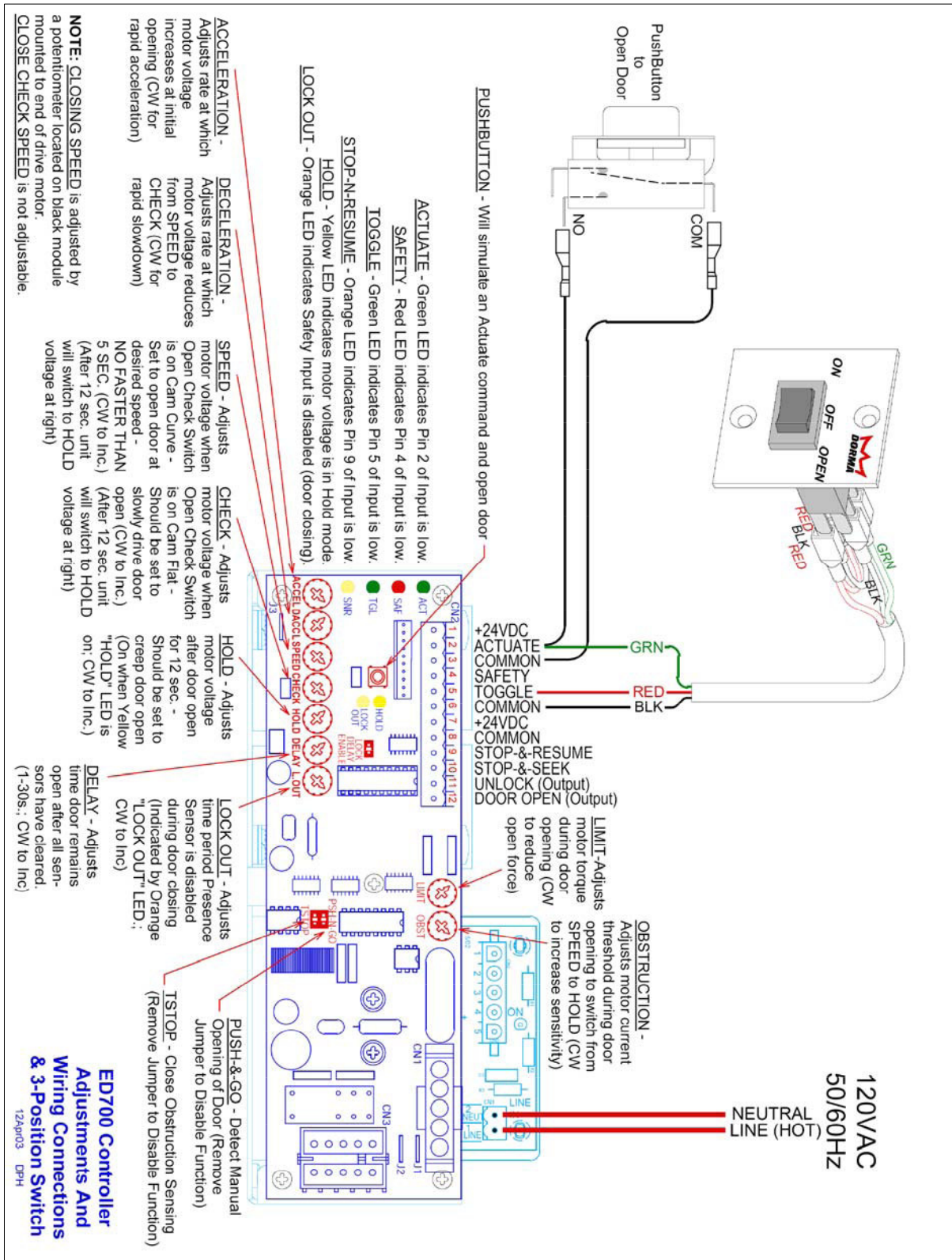


Reveal	Dim "A:"	Dim "B"
0.0"	18.0"	12.0"
0.5"	18.0"	12.0"
1.0"	18.0"	12.0"
1.5"	18.0"	12.0"
2.0"	18.0"	12.0"
2.5"	18.5"	12.0"
3.0"	18.5"	12.0"
3.5"	18.5"	12.0"
4.0."	18.0"	12.0"

NOTE: Dimensions shown are approximate. After attaching the foot to the door at the dimension shown, open the door to 90°, actuate the operator and allow to rotate until stopping against the internal stop. With the adjustable arm set at the "B" dimension, install the drive arm on the operator shaft at the closest location allowed by the spline. Reset the adjustable arm to allow connection to the drive arm with the door at 90°.

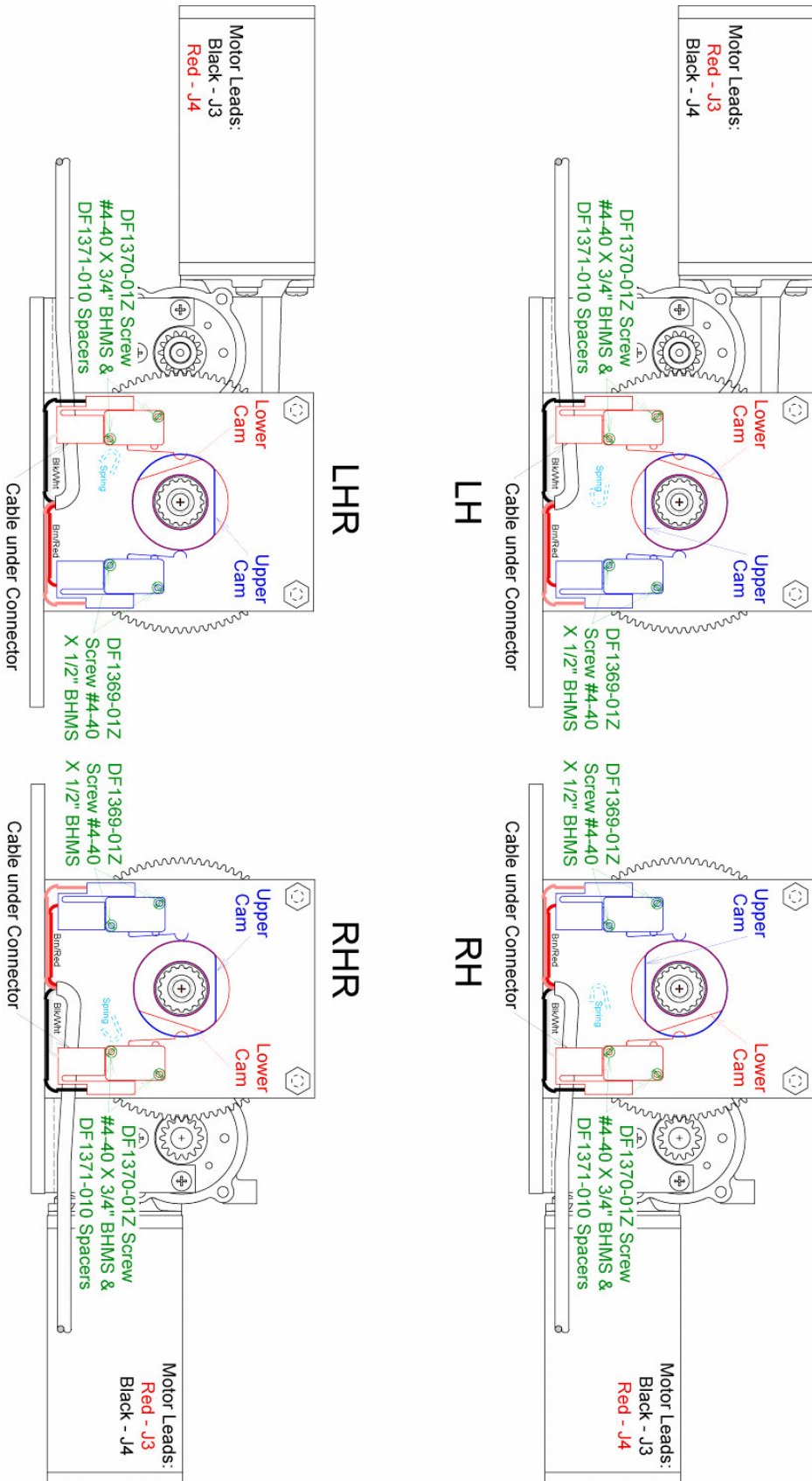
# MOUNTING THE PULL ARM TRACK







## ED700 MicroSwitch and Cam Settings (as viewed looking up at bottom of operator)





## SINAGE AND SAFETY CHECK

1. Decals. The door should have traffic decals properly displayed as follows:



Figure 1



Figure 2



Figure 3

- A. Swinging doors serving two-way traffic shall be marked with a decal, visible from both sides of the door, with the words "CAUTION, Automatic Door". (See Figure 6) The words "Automatic Door" must be at least 1/2 in. letters. It should be mounted on the door at a height 58 in.,  $\pm 5$  in. (147 cm,  $\pm 13$  cm) from the floor to the centerline of the sign. The sign shall be minimum of 6 in. (15.2 cm) in diameter and made with black lettering on yellow background.
- B. When a separate wall switch is used to initiate the operation of the door operator, the doors shall be provided with signs on both sides of the door with the message "ACTIVATE SWITCH TO OPERATE." The lettering shall be white and the background shall be blue. (Figure 2)
- C. An AAADM safety information sticker should be affixed on the door or frame in a protected, visible location. If you need additional decals for your automatic doors, call your automatic door supplier.

2. Activating Switch. (knowing Act)

Doors equipped with a manual operate switch shall, when activated, hold the door open for five seconds minimum after release of activating switch. Reactivate door and crouch motionless in door opening for 10 seconds. Door should not close.

3. Housekeeping. Check the door area for tripping or slipping hazards. Check all door panels for damage. Make sure that all covers are properly secured. There should be no bulletin boards, literature racks, merchandise displays, or other attractions in the door area that would interfere with use of the door.
4. Traffic Patterns. Observe traffic patterns. Plan routing so people enter and exit in a straight approach, directly onto the center of the door opening.