

DOR-O-MATIC™

INGERSOLL-RAND

ARCHITECTURAL HARDWARE

Series 96000 Sliding Door

**Installation Instructions
and Service Manual**

DOR - O - MATIC™

7350 W. Wilson Ave.
Harwood Heights, IL 60656

Toll Free: 1-800-543-4635
In Illinois: 708-867-7400
Sales FAX: 708-867-0291
www.doromatic.com

INDEX

TITLE	PAGE
INSPECTION	2
HEADER & JAMB MOUNTING	3
PACKAGE COMPONENTS	5
THRESHOLD INSTALLATION	6
PANEL (SO) INSTALLATION	6
DOOR (SX) INSTALLATION	8
LIMIT ARM & BUMPER BAR INSTALLATION	10
WIRING DIAGRAM	11
GLAZING	12
RELEASE FOR SERVICE	12

INSPECTION

1. Verify that the order was shipped complete and correct, including model number, color, and package width and height.
2. Verify at **job site** that **all conditions** are correct and in accordance with **final approved shop drawings**.
 - A. Check that the opening is the correct size. Correct size is package width plus $\frac{1}{2}$ " (13mm) and package height plus $\frac{1}{4}$ " (6mm), for shimming and caulking (Figure 1).

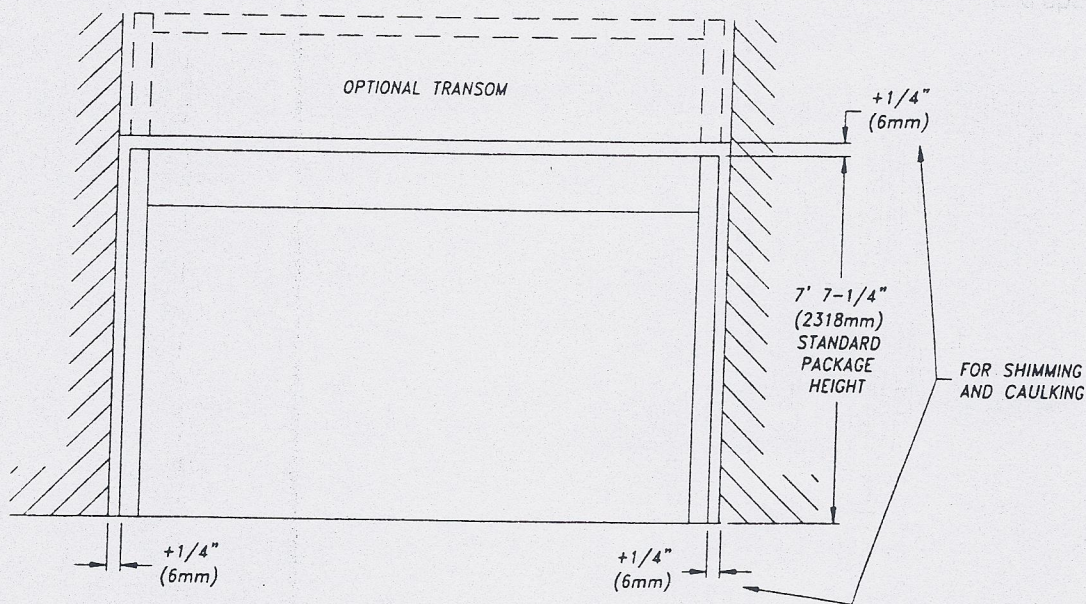


FIGURE 1: Clearance Required at Rough Opening

- B. Check that the floor is level. Use a minimum 6'-0" (1829mm) level or use the actual aluminum header turned upside down to check floor (Figure 2).
- C. Using a plumb bob, check that the rough opening where the jambs will be mounted is vertical (Figure 2).
- D. Check the diagonal measurements to insure that the opening is a true rectangle, not just a parallelogram (Figure 2).

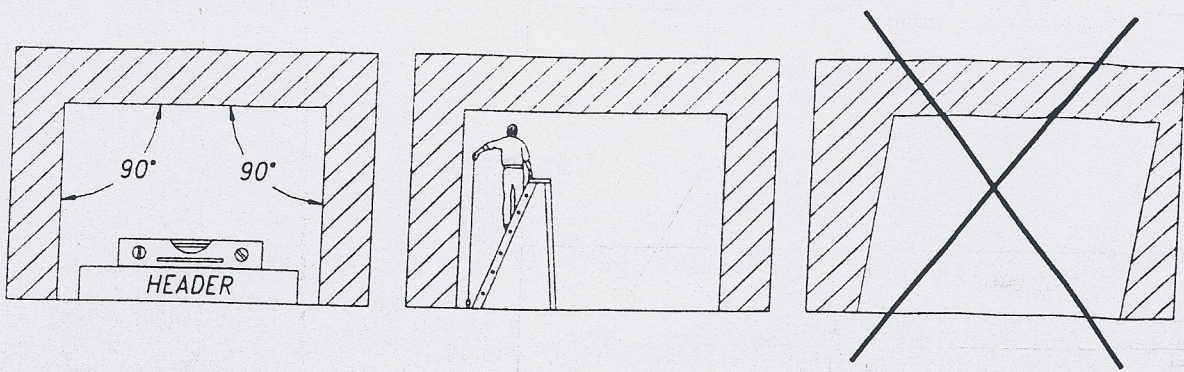


FIGURE 2: Check Rough Opening

- E. Check that the electrical feed (120V, 15A single phase for North America, 220/240V, 5A single phase for Europe, Asia, etc.) is correctly located in accordance with final approved shop drawings and all conduits and electrical junction boxes for push plates or other activation devices (if required) are likewise correctly located.

NOTE: If any of the above items are not correct, **do not attempt to install the Series 96000 Slide package!** Report any incorrect items to the general contractor **immediately**. Do not proceed until all conditions are correct.

HEADER & JAMB MOUNTING

1. Open the carton marked "HEADER". Remove the header and set on a piece of cardboard with the swing cover facing up. Remove the cover bumpers near the cover hinge. Do not lose the cover bumpers, as they must be re-installed to prevent the cover from coming off when opened. Using a screwdriver, press up on the cover lock tab (one each end) to disengage and open the cover. (Figure 3).

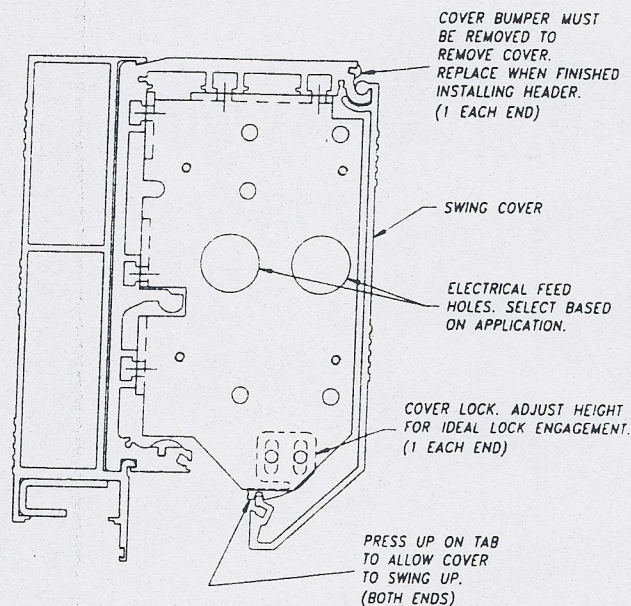


FIGURE 3: Cover Removal

2. Within the header (factory installed), are the motor/gearbox with drive pulley, belt drive, idler pulley and tensioner assembly, control box, transformer box, safety beam control box, any switches and the terminal block bracket. Also, lay out the items shipped in a blister-pack at a convenient location.
3. Align the jamb tubes with the ends of the header, making sure that the bolt holes and electrical feed hole line up. Use three $\frac{1}{4}$ -20 X 1" long bolts on each side to secure the header end cap to each jamb tube. Then install one dress end cap on each side using the #8-32 screws (Figure 4).

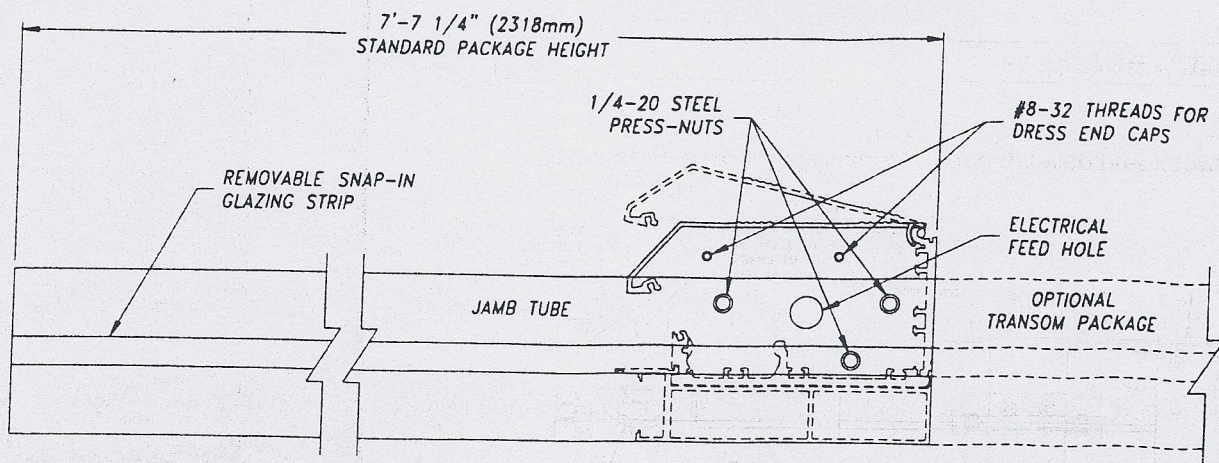


FIGURE 4: Jamb Tube Attachment to Header

4. Insert wood tapered shims at each jamb to plumb each jamb. Insert $\frac{1}{4}$ " (6mm) spacers around the header or horizontal transom tube at anchor locations to keep the tubes from being pulled tight.
5. With a helper, tip up the jamb/header assembly and position it within the rough opening, making sure the swing cover is on the correct side. Verify that the package is located correctly within the rough opening – refer to the final approved shop drawings. The Series 96000 Slide package is **usually** centered within the opening or is mounted flush with the curtain wall, but verify the position with the drawings, contractor, architect, etc.
6. Use appropriate fasteners (four per jamb) to anchor through the glazing recess of the jamb tube to the wall or adjacent framing. Check the jamb tubes with a level to be sure that the tubes have not been pulled in by the anchors. Finally, install the snap-in glazing strips into the jamb tubes (Figure 5).

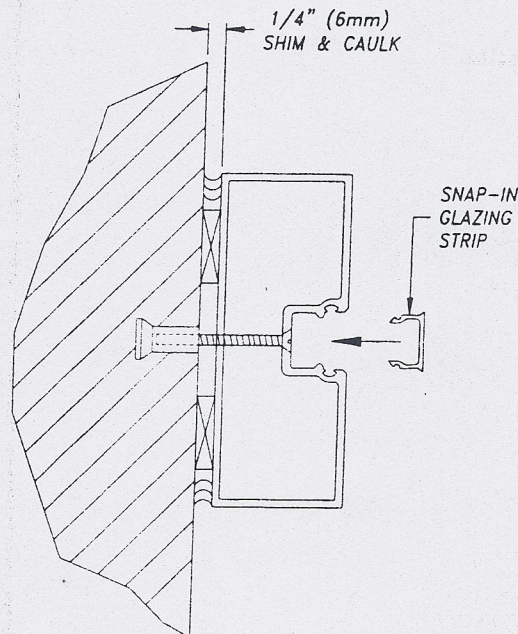


FIGURE 5: Anchoring the Jamb Tube

7. The standard package height is 7' 7-1/4" (2318mm). On occasion, the approved shop drawings sometimes require a package height of 7' 6-3/4" (2305mm). If this is the case, cut off $\frac{1}{2}$ " (13mm) from the bottom of each jamb tube in the field. This generally is performed for a recessed threshold application.

PACKAGE COMPONENTS

1. Refer to the following illustration for a detailed breakdown of internal drive components (Figure 6).

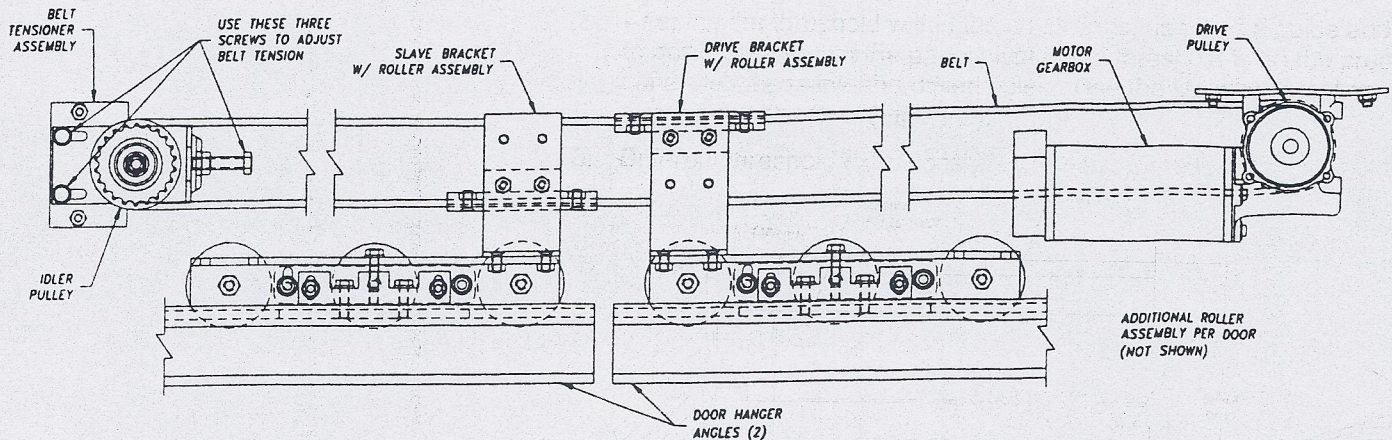


FIGURE 6: Belt Drive Assembly

2. Refer to the following illustration for a detailed section view of a typical Series 96000 Slide inside slide application (Figure 7).

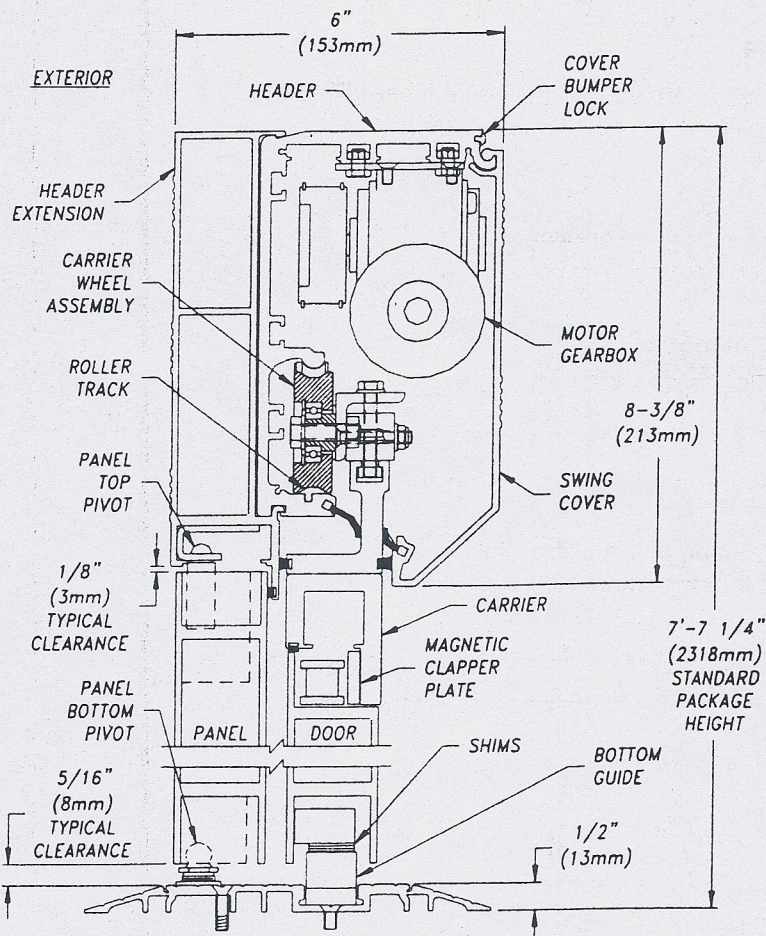


FIGURE 7: Section View through Header, Door and Panel

NOTE: If the package being installed is over 10' 0" (3048mm) wide and has a transom, a vertical transom tube must be anchored securely to the top transom tube in order to prevent deflection in the header.

THRESHOLD INSTALLATION

1. After again verifying that the floor is level, snap a chalk line 1-1/2" from the face of each jamb on both sides. Place the threshold between the jamb tubes within the chalk lines.
2. Keeping the threshold within the chalk lines, use it as a guide and drill through holes into floor material. Prior to drilling, verify that the panel pivot in the threshold is on the proper side of the opening. Place plastic concrete inserts into the drilled holes. Use the stainless steel screws from the blister-pack to fasten the threshold to the floor (Figure 8).
3. Different threshold extrusions are provided for recessed threshold applications.

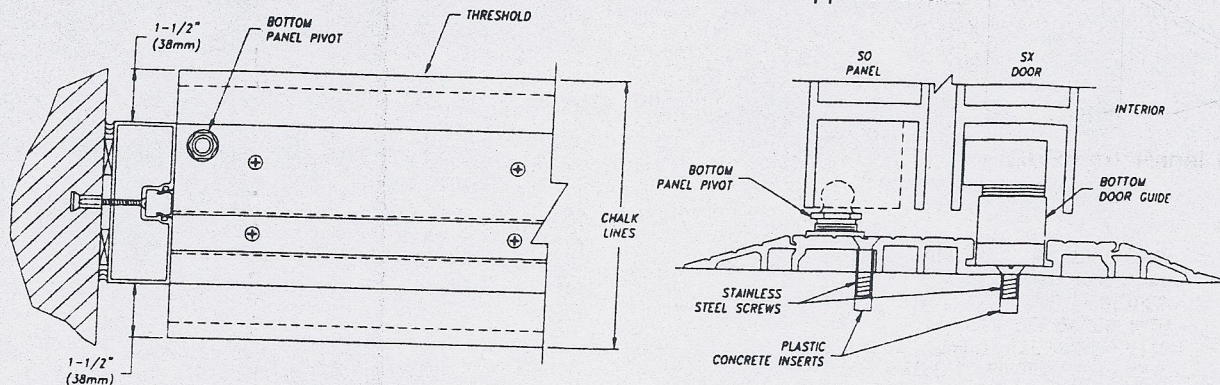


FIGURE 8: Installation of Threshold

4. Thread the panel pivot post (found in blister pack) into the pivot receiver in the threshold and adjust to correct height (Figure 9).

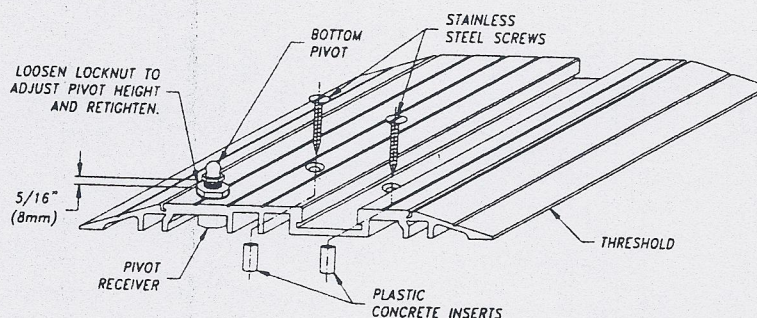


FIGURE 9: Bottom Panel Pivot Attachment

NOTE: Certain owners or builders prefer **not** to install a threshold across the door opening. Refer to the final approved shop drawings, general contractor, architect, etc. for details.

PANEL (SO) INSTALLATION

1. Remove panels from carton. Lift panel and place bottom pivot block (factory prepped and installed in bottom panel stile) onto bottom pivot. Swing and proceed to install top pivot pin into pivot bracket mounted in header extension (Figure 10).
2. Top pivot pin is shipped in retracted position. Loosen set screw and release top pivot pin into the hole in the bracket. Tighten set screw when top pivot pin is set (Figure 11).
3. Adjust lock nut on bottom pivot to give the required 1/8" (3mm) clearance at the top of the panel (Figure 9).
4. Top pivot removal tool #96022-100 is required to remove panel. Loosen set screw and push pin down with the tool (Figure 12).

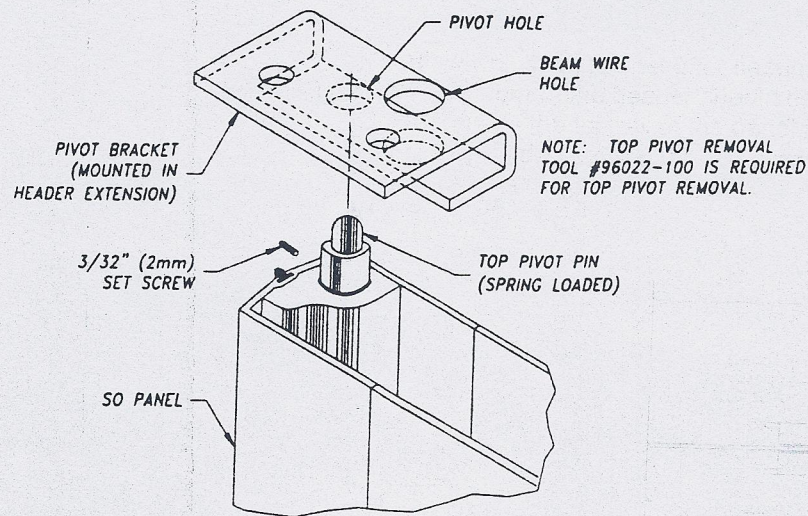


FIGURE 10: Panel Top Pivot Detail

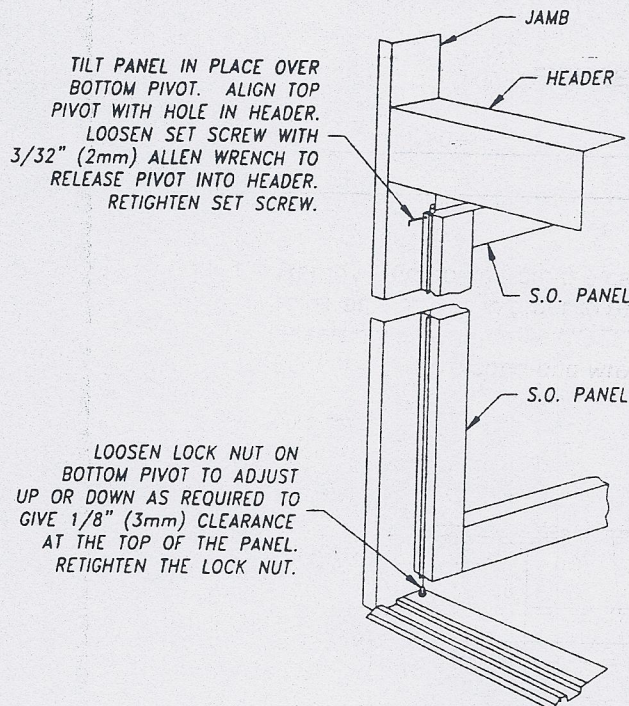
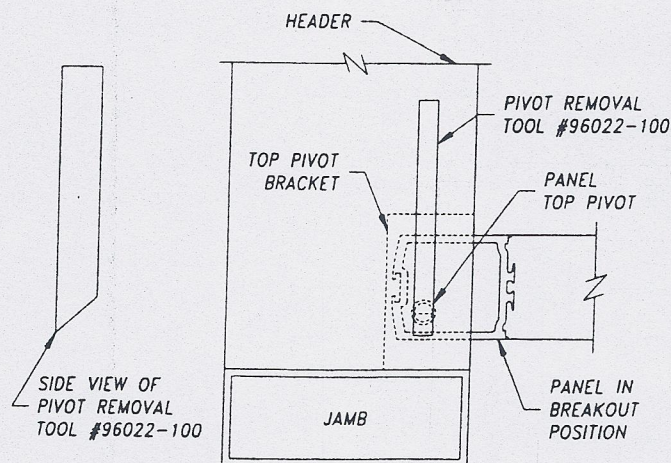


FIGURE 11: Panel Installation Detail



NOTE: BE CAREFUL NOT TO DAMAGE OR CUT THE PENCIL BEAM CABLES THAT RUN THROUGH THE TOP PIVOT BRACKET WHEN REMOVING THE PANEL.

FIGURE 12: Panel Removal Detail

- Slowly close the panel after securing the pivots into position. The clearance between the top of the panel and the bottom of the header should be $1/8"$ (3mm) (Figure 13). If the clearance is greater than $1/8"$ (3mm), the magnet in the top rail of the panel may not be close enough to the reed switch in the header to complete the circuit for door activation. To correct the clearance, refer to the previous illustrations to remove the panel and adjust the height.

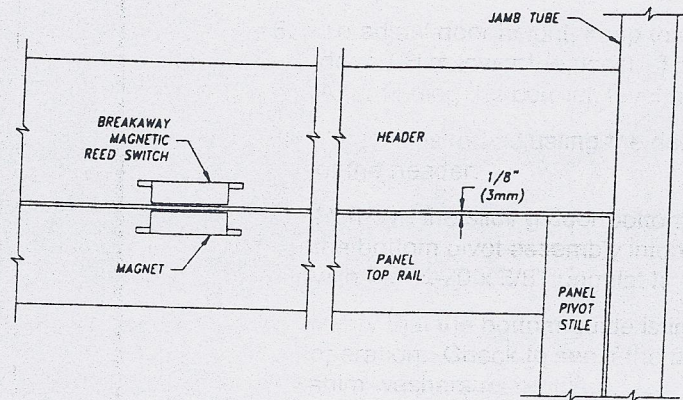


FIGURE 13: Panel (SO) Clearance for Reed Switch and Magnet

DOOR (SX) INSTALLATION

- Remove the doors from the carton. Also, remove the M6 x 25mm metric bolt and M6 metric nuts from the roller assemblies in order to remove the door height adjustment blocks and door angle from the roller assembly **as one unit**. *NOTE: All mention of M6 nuts and bolts refers to the thread diameter. Use a 10mm socket or 10mm open-end wrench when removing or installing these fasteners.*

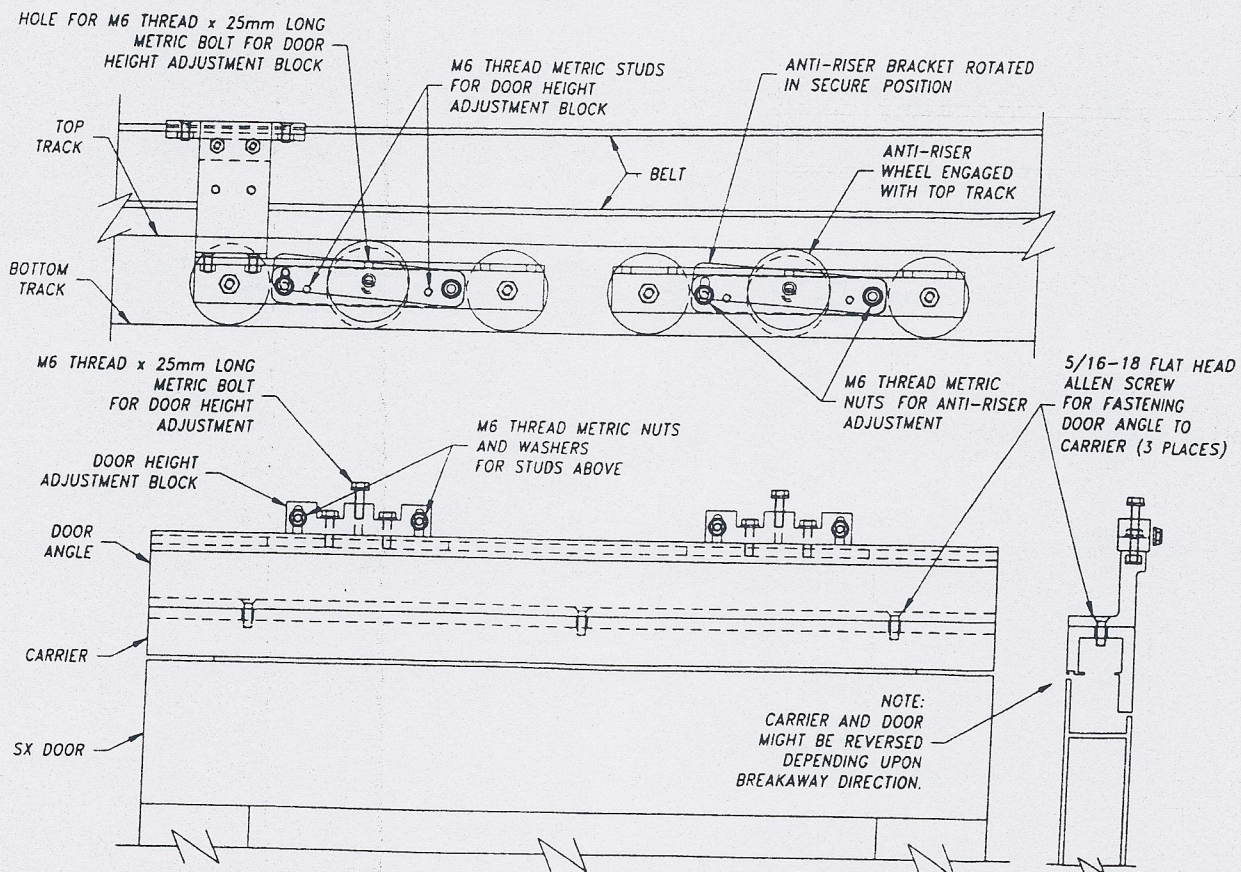


FIGURE 14: Anti-Riser Adjustment and Door (SX) Attachment Procedure

2. Verify that the anti-riser wheel is securely engaged with the top track of the header on all roller assemblies (Figure 14).
3. Using the 5/16-18 flat head socket screws supplied, attach the door angle/adjustment block assembly to the top of the carrier. Make sure that the door matches the angle and will break out to the proper side (Figure 14).
4. Hang the door/angle/adjustment block assembly back on the studs in the roller assemblies (2 per door).
5. To adjust door height, keep the M6 metric nuts loose and turn the M6 x 25mm metric bolt (RH to raise the door, LH to lower the door). To keep the door level, be sure to adjust both roller assemblies on each door. After finding the correct, level height, secure the assembly in place with the M6 metric nuts (Figure 15).
6. When finished adjusting the door height, again verify that the anti-riser wheels are engaged with the top track of the header.
7. Remove the sliding door bottom pivot assembly (which includes the floor guide) from the blister pack. Install the bottom pivot assembly into the bottom vertical door stile through the two prepped and countersunk holes with the 1/4-20 x 3/8" long flat head screws provided (Figure 16).
8. Verify that the bottom guide is in the threshold track and slowly slide the door back and forth to assure smooth operation. Check to see if the floor guide is deep enough in the track. It may be necessary to add or remove shim washers as required.

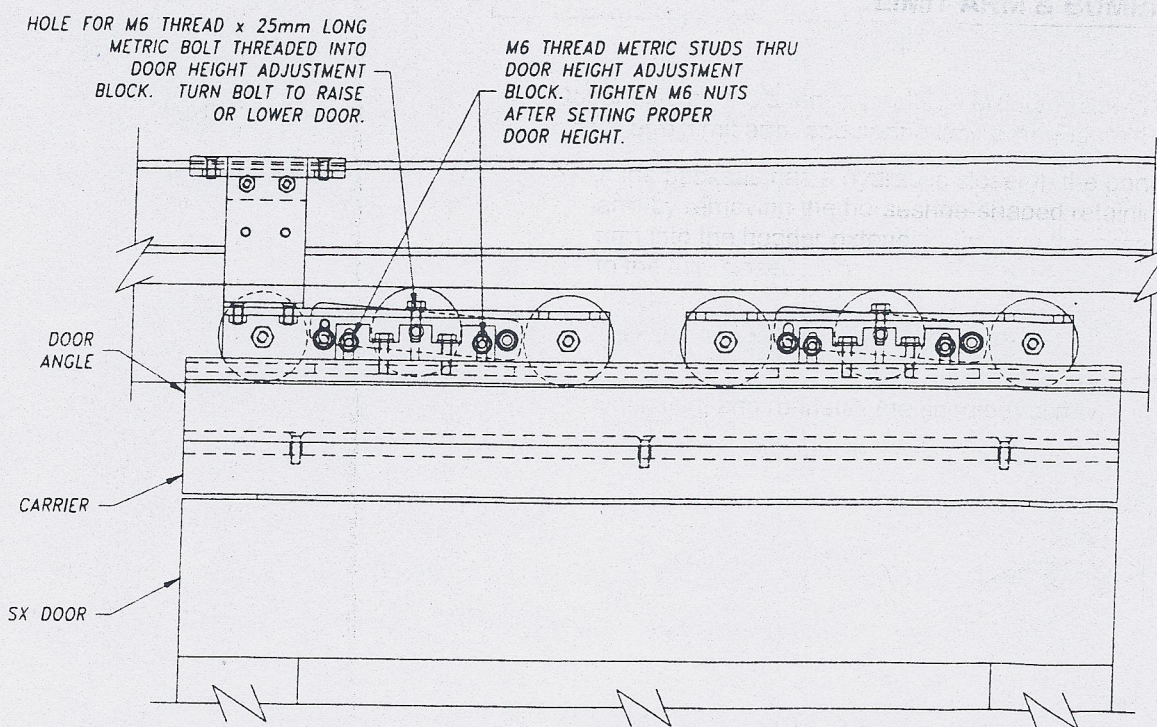


FIGURE 15: Door (SX) Height Adjustment

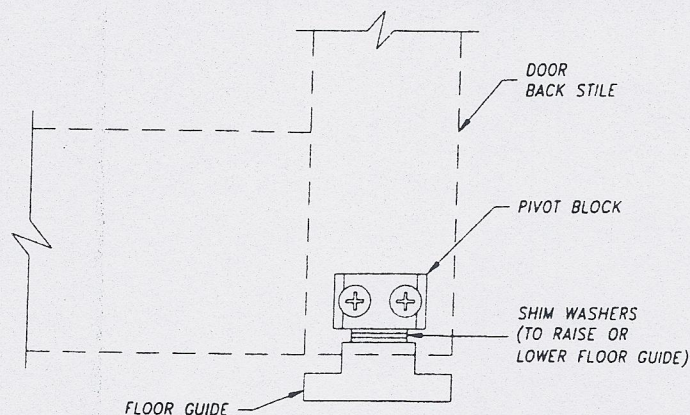


FIGURE 16: Installation of Door (SX) Bottom Pivot Assembly

9. Next, break open the door and panel. Slowly close the door and check the clearance between the top of the door and the bottom of the carrier. If the clearance is not $1/8"$ (3mm), loosen the $1/4"$ (6mm) allen head set screw at the bottom of the carrier. Adjust the clearances as required by turning the large allen head bolt. After setting the correct clearance, re-tighten the $1/4"$ (6mm) allen head set screw (Figure 17).

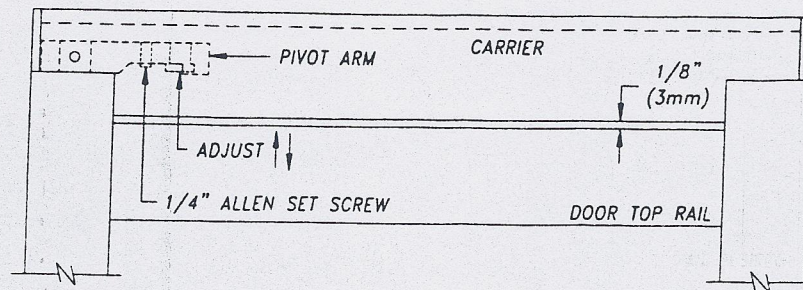


FIGURE 17: Door/Carrier Adjustment

LIMIT ARM & BUMPER BAR INSTALLATION

1. Depending on the specific package ordered, Dor-O-Matic provides one of three limit arm types: hydraulic closer arm, limit arm, and spring limit arm (Figure 18).
 - A. If the package has a hydraulic closer in the panel, the arm is shipped installed on the closer. Remove the arm by removing the horseshoe-shaped retaining clip from the closer shaft. Install the roller end of the arm into the header extension through the access slot provided. Turn the closer speed adjusting screws to the fully closed position. With a wrench, turn the closer pinion shaft to a position where, that when the door is set in the opening, the slot in the arm will easily slip over the shaft. Re-install the horseshoe-shaped clip through the closer shaft.
 - B. For all other packages, remove the shoulder screw from the limit arm, insert the roller up into the header extension, and re-install the shoulder screw.

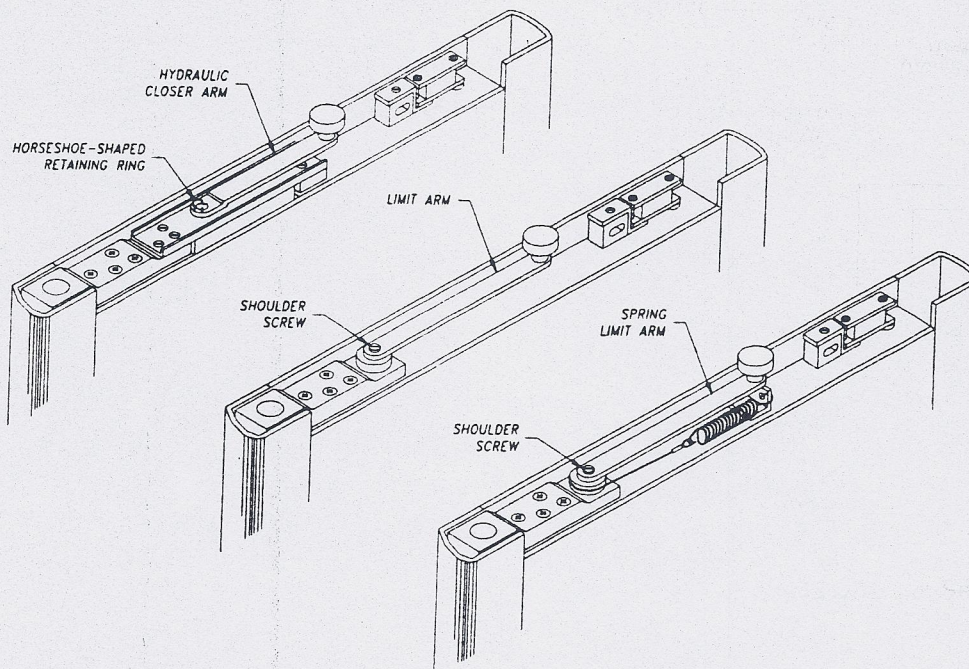


FIGURE 18: Limit Arm Details

- Refer to the following illustration for Dor-O-Matic bumper bar installation (Figure 19).

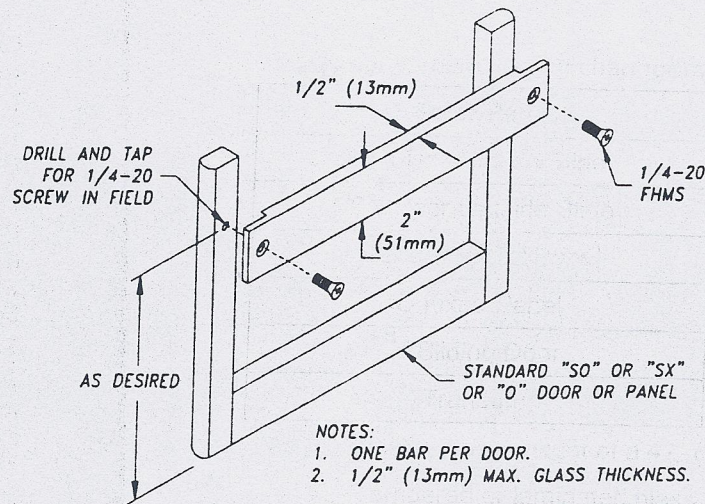


FIGURE 19: Bumper Bar Installation

WIRE DIAGRAM

Refer to the following illustration for connecting power to the Series 96000 Slide (Figure 20).

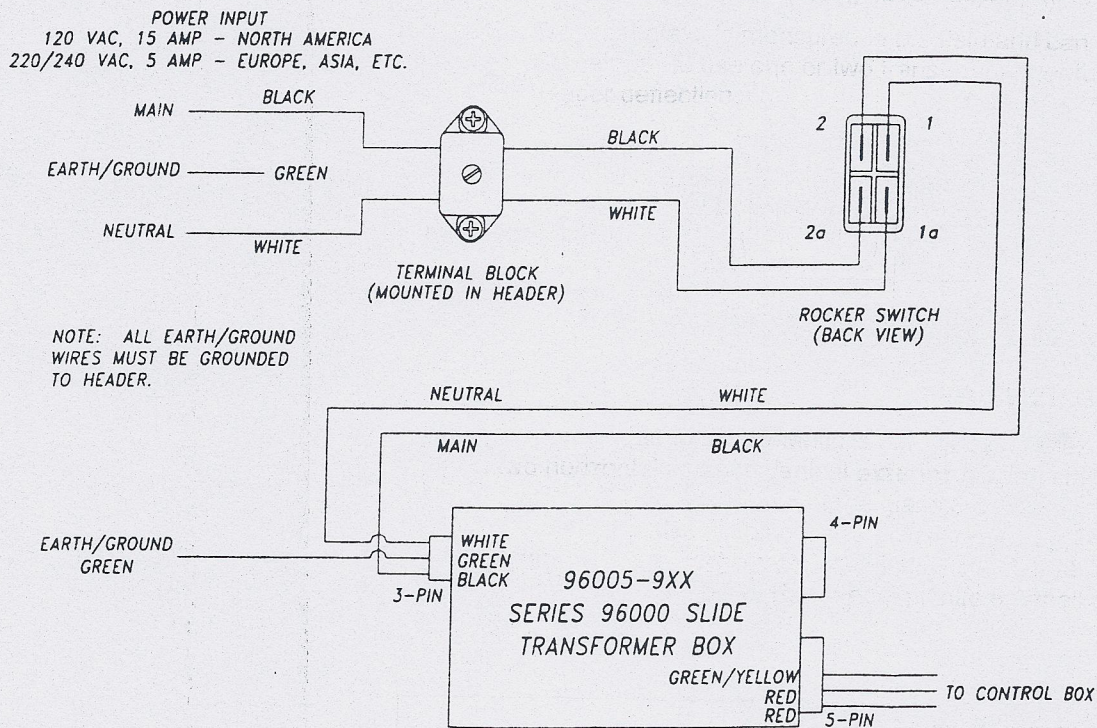


FIGURE 20: Series 96000 Slide Wiring Diagram

GLAZING

1. Refer to the following chart for maximum weight of door and glass as well as maximum glass thickness.

Door/Panel	Max. Weight of Door & Glass	Max. Glass Thickness
SX Door Inside Slide	150 lbs. (68kg.)	1" (25mm)
SX Door Outside Slide	150 lbs. (68kg.)	1" (25mm)
SO Swing Out Panel	200 lbs. (90 kg.)	5/8" (16mm)
O Fixed Panel	200 lbs. (90 kg.)	1" (25mm)
X Sliding Door	200 lbs. (90 kg.)	1" (25mm)
Transom	Varies	1/4" to 1" (6mm to 25mm)

NOTE: The average weight of a 42" (1067mm) door or panel less glass is 40 lbs. (18 kg.).

- A. Tempered or laminated glass is required in doors and panels per ANSI Z97.1-1972.
- B. If the installation is a "standard package", the glass sizes (both with 2" (51mm) muntins and without) are called out in the Dor-O-Matic details and specifications book, along with the model number of the package.
- C. If the installation is **not** a standard package, measure the width and height between the stile extrusions and **subtract** 1/2" (13mm) (Figure 21). This is the glass size to order.
- D. Order the correct glass stops for the thickness of glass in the application.
- E. All final opening and closing speed adjustments should be made after the glass is installed.
- F. Transom glass is measured in the field and can be 1/4" (6mm) to 1" (25mm) thick non-tempered glass. Remember to use one or two transom hanger tubes for packages over 10'-0" (3048mm) wire to prevent header deflection.

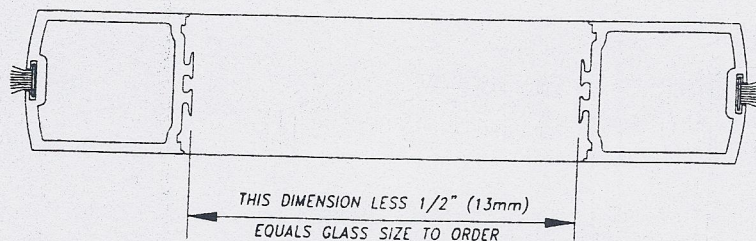


FIGURE 21: Glass Measurement

2. A feature unique to Dor-O-Matic is our "Security Glazing System". When glazing the doors and panels, snap in two horizontal and two vertical **exterior** glazing stops. Be sure the stops are securely snapped into the rails and stiles. Place the bottom of the glass onto the nylon glazing blocks and tilt up into vertical position. Have a helper hold the glass in place, and proceed to snap-in the **interior** glazing stops. This design makes the glass non-removable from the exterior. Finally, check that the rubber trim of the glazing stops are not pinched or tucked against the glass. Run a pocketknife or small scraper around the perimeter of the glass to correct any such problems.

RELEASE FOR SERVICE

Clean the glass. Install all safety, traffic control, and instruction decals to the door as required. **This is very important! Failure to do this leaves the installer LIABLE for any accident that might occur. This must be done!** Present the keys to the owner or general contractor. Demonstrate the unit, review all safety features as well as the safety check that is to be performed by the owner each morning.

DOR-O-MATIC 96500-900 Fail Safe Electric Lock and 96550-900 Fail Secure Electric Lock Installation Instructions

96500-084

GENERAL

These Dor-O-Matic Electric Lock Systems are designed for use with a Dor-O-Matic Quantum-Slide operator and Dor-O-Matic four-position key switch 96030-900. Refer to the following chart for door and lock functions.

96500-900 Fail Safe Electric Lock		96550-900 Fail Secure Electric Lock	
Key Position	Operation	Key Position	Operation
Off	Door is locked. Inside activation and outside activation are both non-functional.	Off	Door is locked. Inside activation and outside activation are both non-functional.
1-Way	Inside Activation: Door is locked until activation, at which point door unlocks and opens. Outside Activation: Door is locked. Outside activation is non-functional.	1-Way	Inside Activation: Door is locked until activation, at which point door unlocks and opens. Outside Activation: Door is locked. Outside activation is non-functional.
2-Way	Door is unlocked. Both inside activation and outside activation are functional.	2-Way	Door is unlocked. Both inside activation and outside activation are functional.
Hold Open	Door is unlocked and held open indefinitely.	Hold Open	Door is unlocked and held open indefinitely.
No power to door	Door is unlocked	No power to door	Door is locked

Note: When morning entry is used with either of the above electric locks and a 4-position key switch, the door will activate regardless of the position of the key switch.

WIRE DIAGRAM

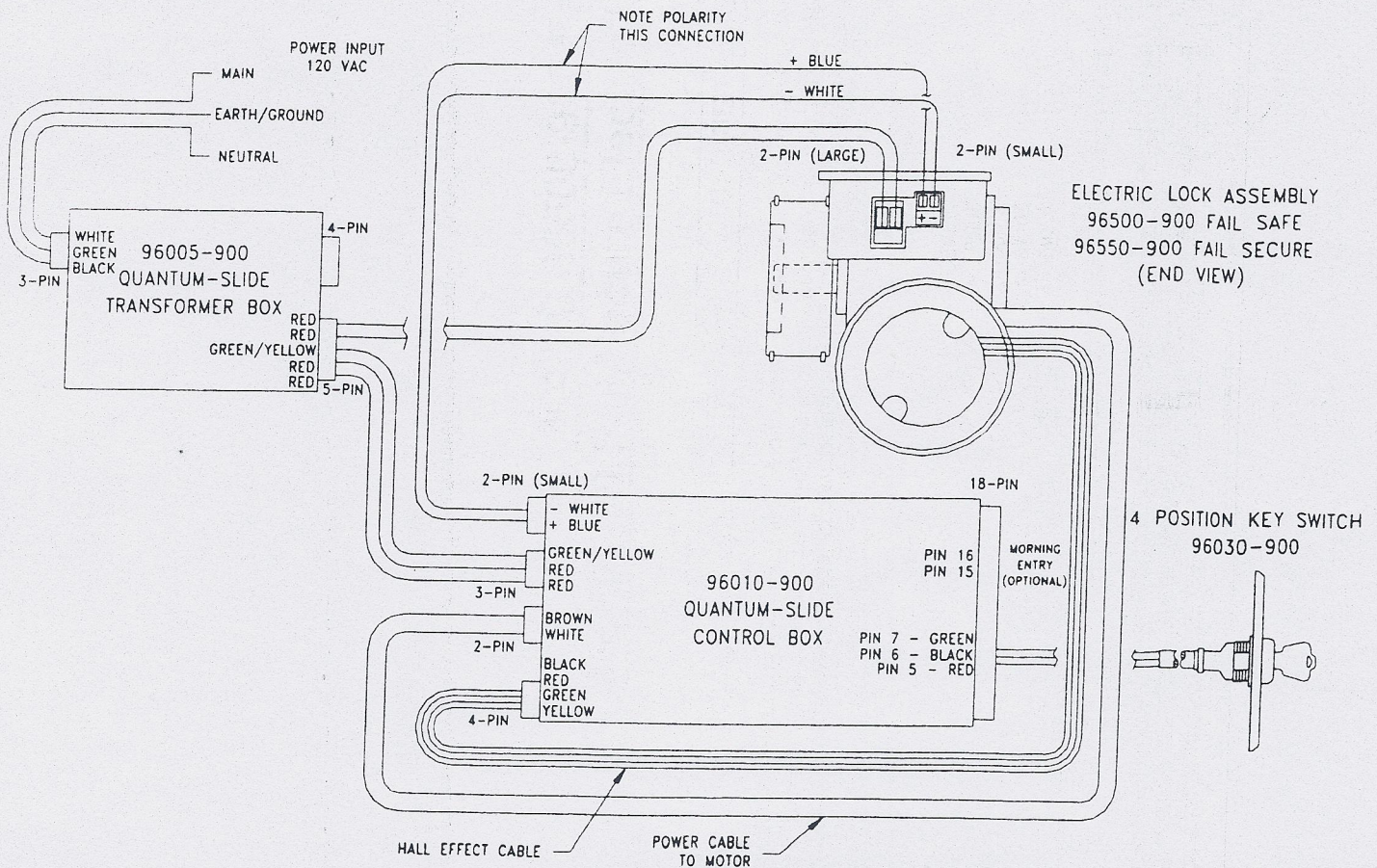


FIGURE 1

DOR-O-MATIC 96500-900 Fail Safe Electric Lock and 96550-900 Fail Secure Electric Lock Installation Instructions

96500-084

CARRIER ADJUSTMENTS

On header lengths under 9 1/2 feet, it may be necessary to relocate the carrier assemblies to accommodate the electric lock assembly. Prior to operating the door, manually open the door to the full open position. Check to see that the carrier assembly does not contact the electric lock assembly. If there is interference, relocate the carrier assembly the necessary distance beyond the centerline of the header to prevent interference. Refer to Figure 2 below for details.

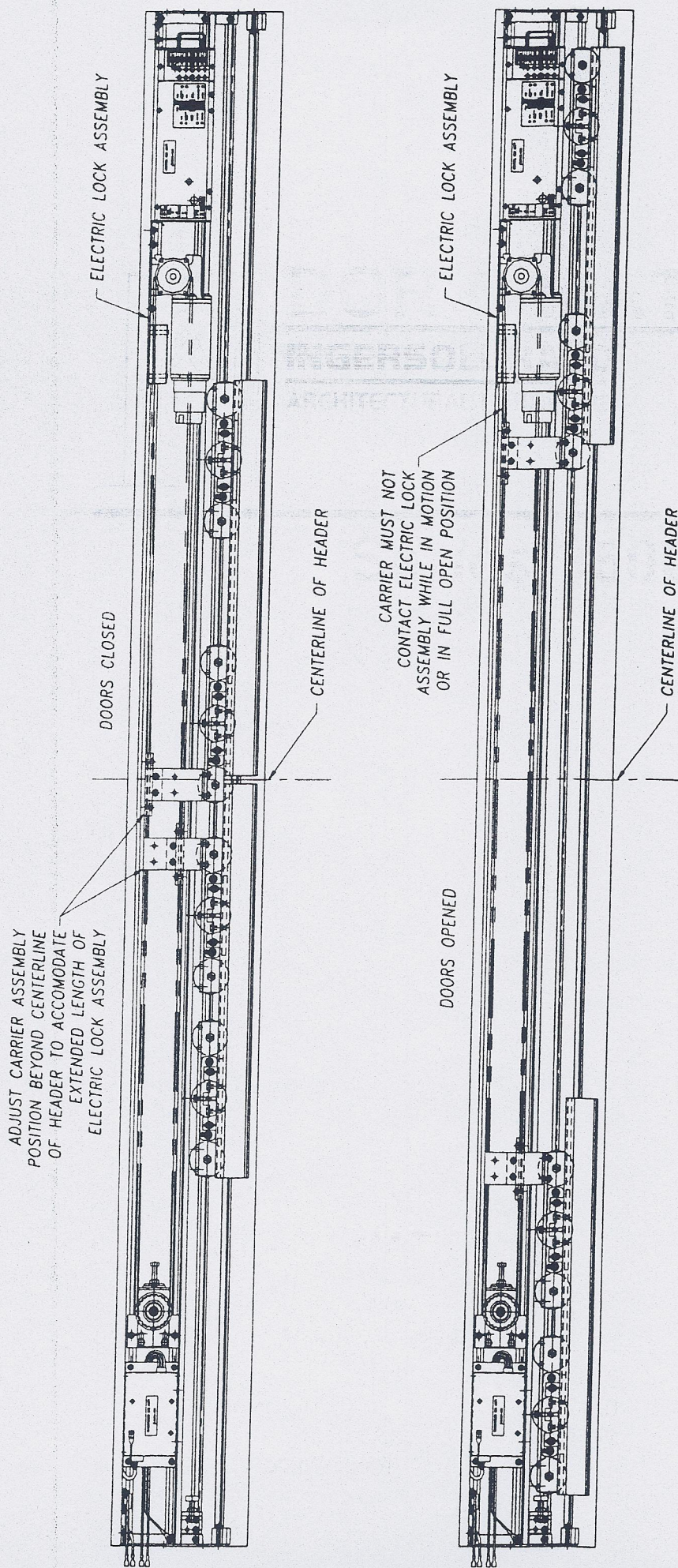


FIGURE 2



DOR-O-MATIC™

INGERSOLL-RAND

ARCHITECTURAL HARDWARE

Series 96000 Slide Control Box

Control Box 96010-900

Transformer Box 96005-900

Installation Instructions

DOR - O - MATIC™

7350 W. Wilson Ave.
Harwood Heights, IL 60656

Toll Free: 1-800-543-4635
In Illinois: 708-867-7400
Automatic Sales FAX: 708-867-0291
www.doromatic.com

INSTALLATION

1. **Preparation:** Refer to Series 96000 Slide Installation Manual #96000-984 for header preparation instructions.

2. **Final Wire Connection:**

Using the appropriate wiring diagrams, connect power (Figure 2) and accessories (Figure 3) as needed.

- A. Use a 115 volt, 60Hz, fused, 15 amp, 3-wire power supply.
- B. Secure all conductors and connections against physical damage.
- C. Route all wiring away from moving parts, sharp edges and heat sources.
- D. Use copper conductors only.

NOTE: Always disconnect main power to operator prior to servicing or cleaning.

3. **Operational Check and Adjustments:**

NOTE: Refer to the latest revision of ANSI/BHMA A156.10-1991 Standard for Power Operated Pedestrian Doors for all settings and adjustments.

Closing Speed:	1 foot per second or more
Auto Reverse Force:	30 pounds or less
Latch Position:	2 inches from closing or more
Hold Open:	4 seconds or more

A. **Sizing:**

Connect main power to the Transformer Box. After the first activation signal, the door should open and close one time, after which it is ready for normal operation. If the door does not size to full open position, first check for binds, then increase the sizing speed by rotating P6 CCW just enough to overcome the door weight, etc.

B. **Opening Speed Adjustment:**

1. Opening speed is adjusted by rotating P2 (CW=SLOWER, CCW=FASTER). It allows for proper adjustment of any normal weight and size door.

2. Cycle the door open and close several times and observe the opening speed. Select a setting that gives desired opening speed.

NOTE: It is recommended that the door be operated as slow as is practical for the traffic conditions.

C. **Closing Speed Adjustment:**

Continue to cycle the door open and close while making adjustments. Set the closing speed of the door by rotating P4 (CW=SLOWER, CCW=FASTER).

NOTE: Reset power to the control box after setting the opening speed and closing speed. This must be done before making any other adjustments.

D. **Back Check Position:**

Rotate SW2 to adjust the back check position (0=MINIMUM, F=MAXIMUM).

E. **Back Check Speed Adjustment:**

The back check speed is controlled by rotating P3 (CW=SLOWER, CCW=FASTER).

F. **Latch Position:**

Latch position is controlled by rotating SW1 (0=MINIMUM, F=MAXIMUM).

G. **Latch Speed Adjustment:**

The latch speed is controlled by rotating P5 (CW=SLOWER, CCW=FASTER).

H. **Time Delay Adjustment:**

Adjustment is made by rotating P1 (CW=LESS HOLD OPEN TIME, CCW=MORE HOLD OPEN TIME). The total adjustment range on the control box is 1 to 30 seconds of time delay.

I. **Normal/Delayed Activation:**

This function is selected with switch SW3. In the normal position, the door opens immediately upon reception of the activation signal. In the delayed position, when the door is fully closed, there is a 1 second delay between reception of the activation signal and the actual opening of the door. This delayed activation allows most electric or magnetic locks time to retract before the door opens.

J. **Auto Reverse in Closing:**

The amount of force required to reverse the door when closing is adjusted by rotating P7 (CW=MORE FORCE, CCW=LESS FORCE). The force cannot be greater than 30 lbs.

K. **Auto Reverse in Opening:**

The amount of force required to reverse the door when opening is adjusted by rotating P8 (CW=MORE FORCE, CCW=LESS FORCE).

L. **Reset Power:**

After setting all of the adjustments, reset power to the control box. Cycle the door to verify all of the settings are correct. If any settings need to be corrected, be sure to reset power again. Power must be reset after any adjustments are made.

4. **Operational Walk-Through Test:**

NOTE: It is assumed that during the installation process, any problems would have been found and corrected before this point. However, it is recommended that a complete walk-through test now be performed.

- A. Activate door operator. The door should open smoothly and silently to the back check point, where it should slow down rapidly and drift into the full open position without slamming.
- B. Remain standing in the activating area for a while, making sure that the door does not time out and close while being activated.
- C. If a door safety device is used, step into the door opening. Remain in the door opening making sure that the door does not close.
- D. Step out of the door opening. After both the activating area and door opening are clear, the door should time out at the pre-set time delay period. The door should then close quietly and smoothly to the latch point, where it rapidly slows down and drifts into the fully closed position without slamming.

5. **Release of the System for Service:**

- A. Remove all tools and installation equipment, and clean any debris from the vicinity of the door.
- B. Install all safety, traffic control, and instruction decals to the door as required. **THIS IS VERY IMPORTANT!** Failure to do this leaves the installer **LIABLE** for any accident that might occur. **THIS MUST BE DONE!**
- C. Verbally explain the proper operation of the door system to the owner or to the person in charge.

FEATURES

- 1. **Easy Open:** When the door is fully closed and is manually opened a few inches, the door will automatically open the rest of the way under normal opening speed.
- 2. **Adjustable Automatic Reversing:** If the door is stalled during the closing cycle, it will automatically stop and reverse fully. The door will then return to the point of obstruction and drop to slow speed, looking for the obstruction. The door will perform this cycle 5 times until the obstruction is

removed. After the fifth cycle, the door will stop. If the door is stalled during the opening cycle, it will automatically stop and reverse fully. The door will remain closed until the next activation signal, at which point it will open normally. Potentiometers on the control box adjust the force and should be adjusted in accordance with all applicable safety codes.

3. **Weatherwise:** The Weatherwise feature allows the customer to reduce the opening size. When the Weatherwise switch is set to "narrow", the door will be allowed to open to about 75% of the normal door opening.

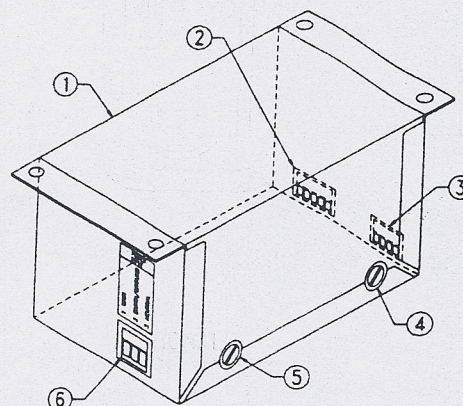
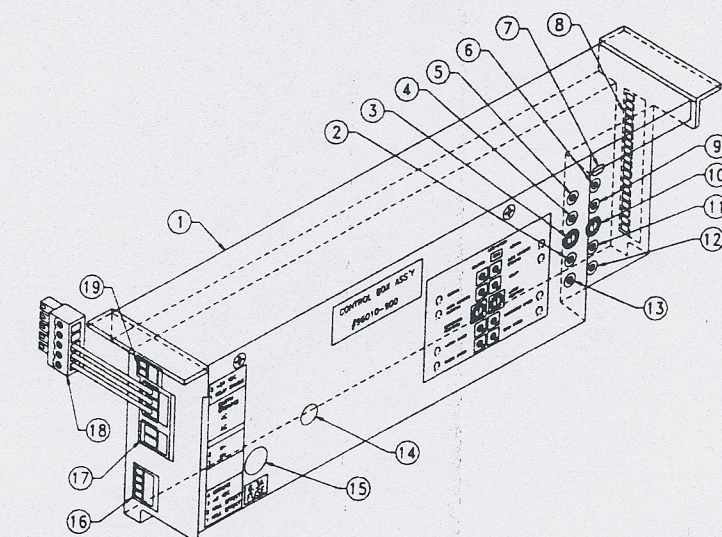
Safety Beam Shut-Off: When the door is fully closed, the safety beam signal is disregarded so that it cannot be used to open the door. Once the door is activated, the safety beam signal is allowed to re-open the door if either safety beam is interrupted during the closing cycle.

5. **Morning Entry:** When morning entry is used with a 4-way switch, the door will activate regardless of the position of the switch.

DO'S AND DON'TS

1. **Do Not** try to use this operator on large, heavy doors without checking with the factory first.
2. **Do Not** connect any remote activating device to the door unless it is located within the "line of sight" of the door.
3. **Do Not** attempt to use a fuse larger than specified.
4. **Do Not** attempt to modify the factory wiring or connect any wiring into an existing electrical circuit or any other electrical device.
5. **Do** make certain that the operator is connected to a dedicated 115 volt circuit from the main circuit breaker panel.
6. **Do** make certain that the operator is properly grounded with a separate green wire.
7. **Do** make certain that all connections are proper and secure before turning the power on.
8. **Do** make certain that all wires are properly dressed and secured to prevent any interference.
9. **Do** make certain that all safety labels and instruction decals relating to door operation are properly applied to the door before leaving the job.
10. **Do** verbally instruct the owner or person in charge of the proper operation of the door.
11. **Do** disconnect main power to the operator prior to servicing or cleaning.
12. **Do** instruct the owner or person in charge of his responsibility of inspecting the door for the following:
 - A. Occasional damage
 - B. Developing problems
 - C. Minor preventative maintenance
 - D. Who and where to call for service when required

DIAGRAMS



1. SERIES 96000 SLIDE CONTROL BOX #96010-900
2. LATCH SPEED ADJUSTMENT (P5)
3. BACKCHECK POSITION SELECTOR DIAL (SW2)
4. AUTO REVERSE CLOSING ADJUSTMENT (P7)
5. SIZING ADJUSTMENT (P6)
6. AUTO REVERSE OPENING ADJUSTMENT (P8)
7. ACTIVATION SWITCH - NORMAL/DELAYED (SW3)
8. 18-PIN CONNECTOR, ACCESSORIES
9. DELAY ADJUSTMENT (P1)
10. LATCH POSITION SELECTOR DIAL (SW1)

11. BACKCHECK SPEED ADJUSTMENT (P3)
12. OPENING SPEED ADJUSTMENT (P2)
13. CLOSING SPEED ADJUSTMENT (P4)
14. CIRCUIT BREAKER, 4 AMP
15. FUSE, 6.3 AMP (DOM #87083-600) (BUSS #GDCT6.3AL250V)
16. 4-PIN CONNECTOR, HALL EFFECT
17. 2-PIN CONNECTOR, TO MOTOR
18. 5-PIN CONNECTOR, POWER INPUT
19. 2-PIN CONNECTOR (SMALL), ELECTRIC LOCK SIGNAL

1. SERIES 96000 SLIDE TRANSFORMER BOX # 96005-900
2. 5-PIN CONNECTOR, POWER TO CONTROL BOX # 96010-900
3. 4-PIN CONNECTOR, POWER TO ACCESSORIES
4. FUSE, 2.5 AMP (DOM # 96012-600) (LITTELFUSE # 239 02.5)
5. FUSE, 2 AMP (DOM # 96011-600) (LITTELFUSE # 239 002)
6. 3-PIN CONNECTOR, POWER INPUT 115V

FIGURE 1: CONTROL BOX & TRANSFORMER BOX DETAILS

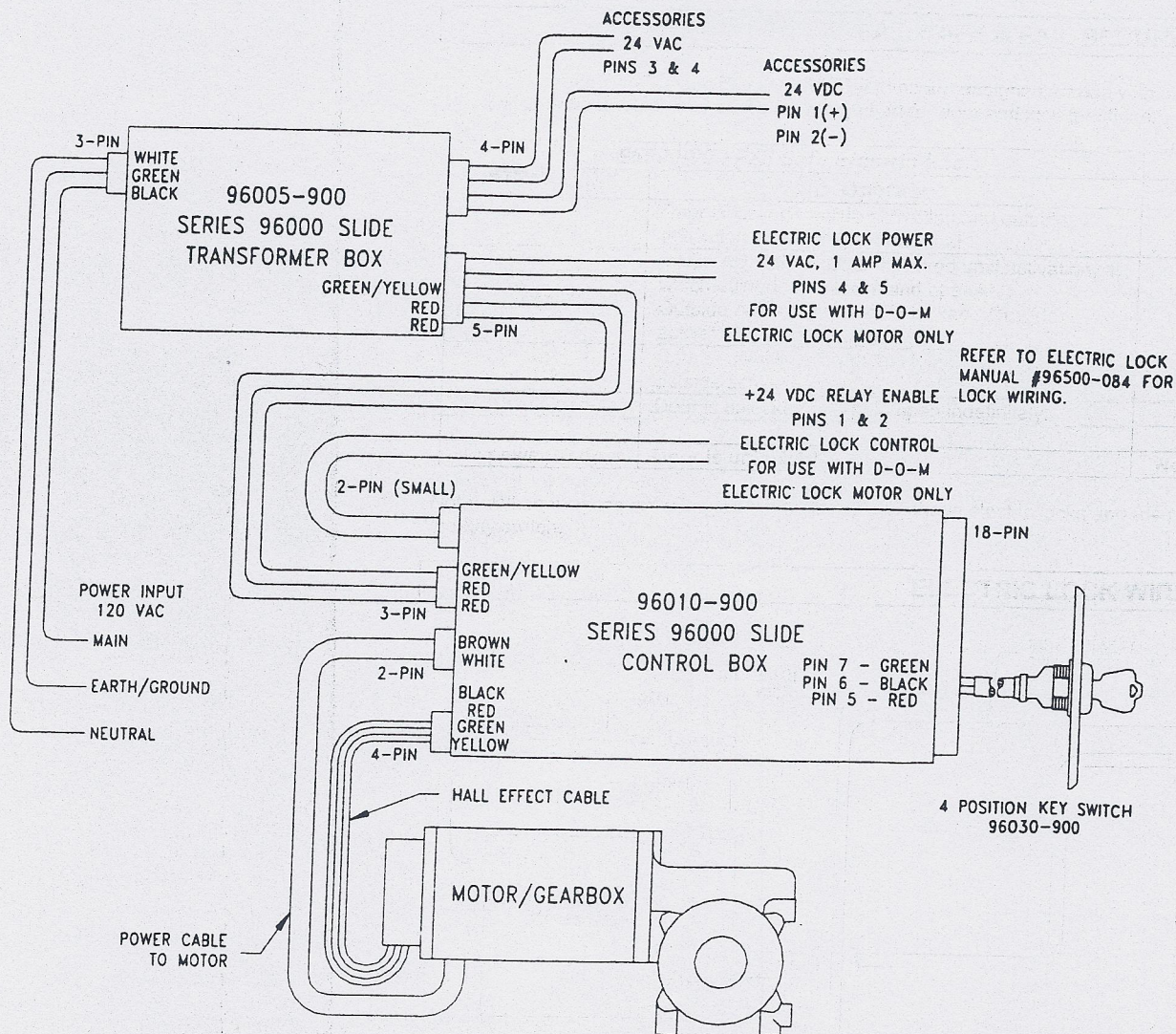


FIGURE 2: POWER WIRING DIAGRAM

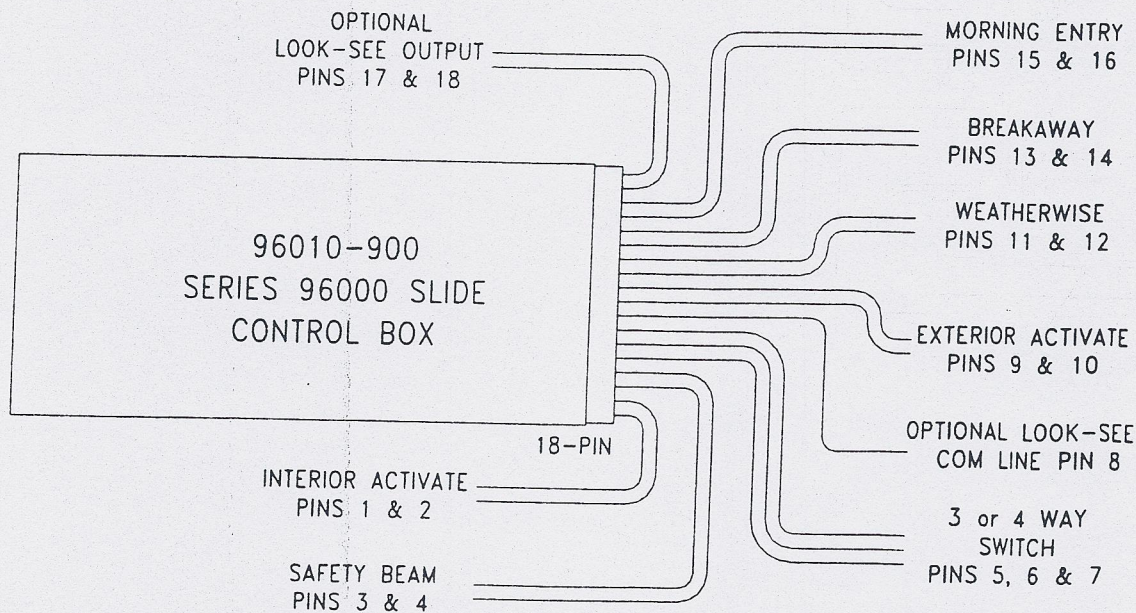


FIGURE 3: ACCESSORIES WIRING DIAGRAM

FAIL SAFE & FAIL SECURE ELECTRIC LOCKS

These Dor-O-Matic Electric Lock Systems are designed for use with a Dor-O-Matic Quantum-Slide operator and Dor-O-Matic four-position key switch 96030-900. Refer to the following chart for door and lock functions.

96500-900 Fail Safe Electric Lock		96550-900 Fail Secure Electric Lock	
Key Position	Operation	Key Position	Operation
Off	Door is locked. Inside activation and outside activation are both non-functional.	Off	Door is locked. Inside activation and outside activation are both non-functional.
1-Way	Inside Activation: Door is locked until activation, at which point door unlocks and opens. Outside Activation: Door is locked. Outside activation is non-functional.	1-Way	Inside Activation: Door is locked until activation, at which point door unlocks and opens. Outside Activation: Door is locked. Outside activation is non-functional.
2-Way	Door is unlocked. Both inside activation and outside activation are functional.	2-Way	Door is unlocked. Both inside activation and outside activation are functional.
Hold Open	Door is unlocked and held open indefinitely.	Hold Open	Door is unlocked and held open indefinitely.
No power to door	Door is unlocked	No power to door	Door is locked

Note: When morning entry is used with either of the above electric locks and a 4-position key switch, the door will activate regardless of the position of the key switch.

ELECTRIC LOCK WIRE DIAGRAM

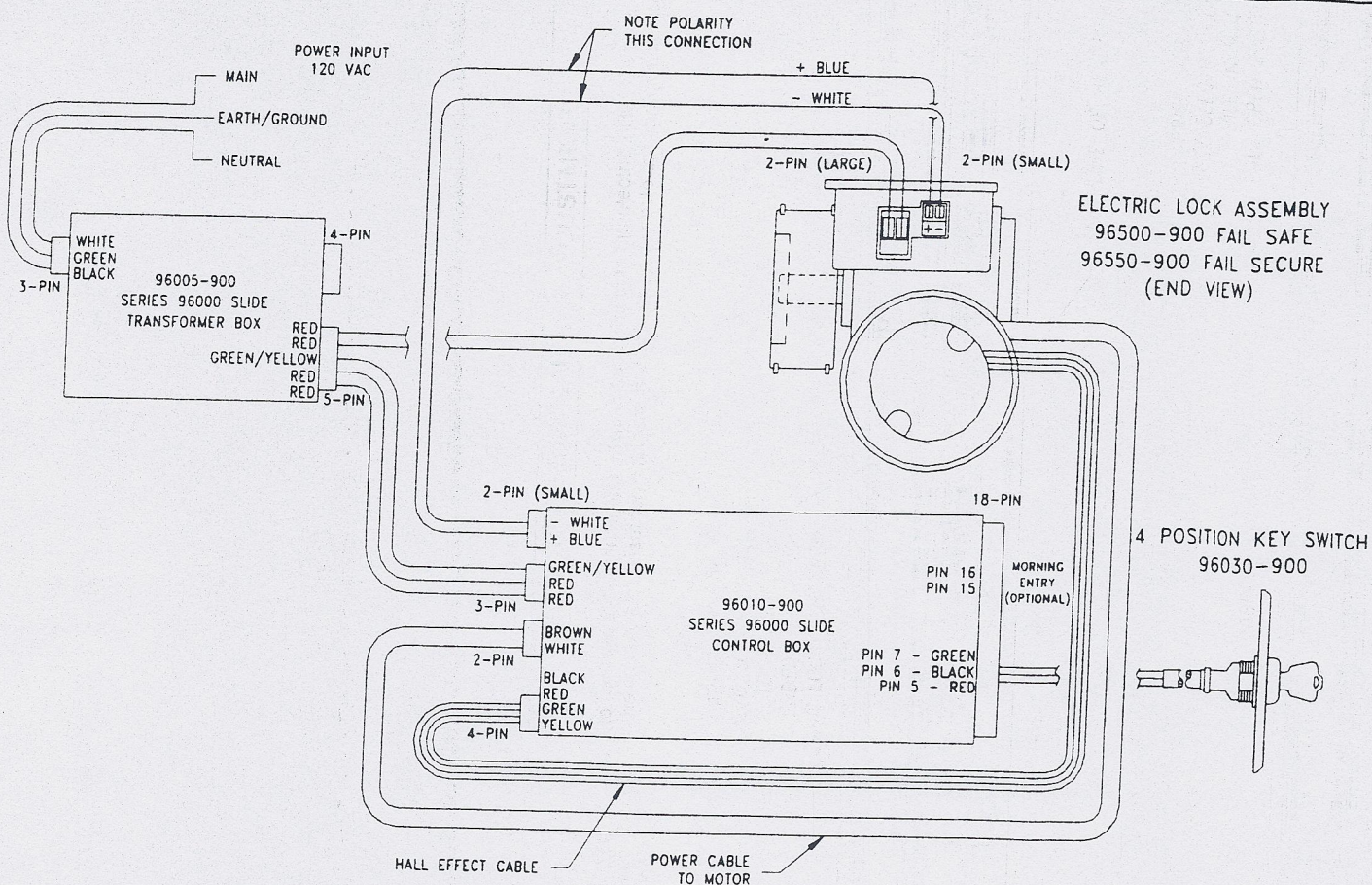


FIGURE 4

ELECTRIC LOCK CARRIER ADJUSTMENTS

On header lengths under 9 1/2 feet, it may be necessary to relocate the carrier assemblies to accommodate the electric lock assembly. Prior to operating the door, manually open the door to the full open position. Check to see that the carrier assembly does not contact the electric lock assembly. If there is interference, relocate the carrier assembly the necessary distance beyond the centerline of the header to prevent interference. Refer to Figure 5 below for details.

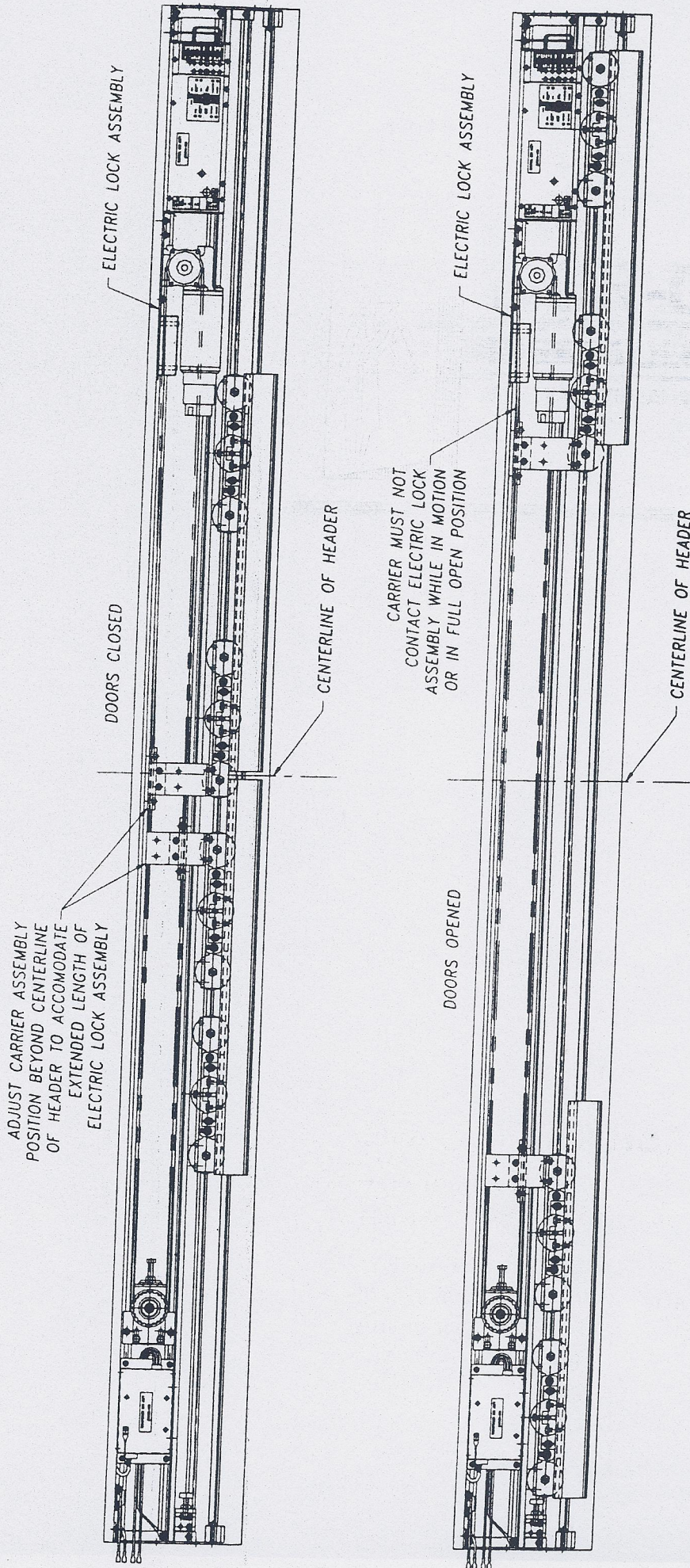
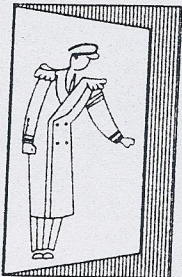


FIGURE 5



DOR-O-MATIC™

INGERSOLL-RAND

ARCHITECTURAL HARDWARE

Series 96000 Sliding Door

Parts Manual

DOR - O - MATIC™

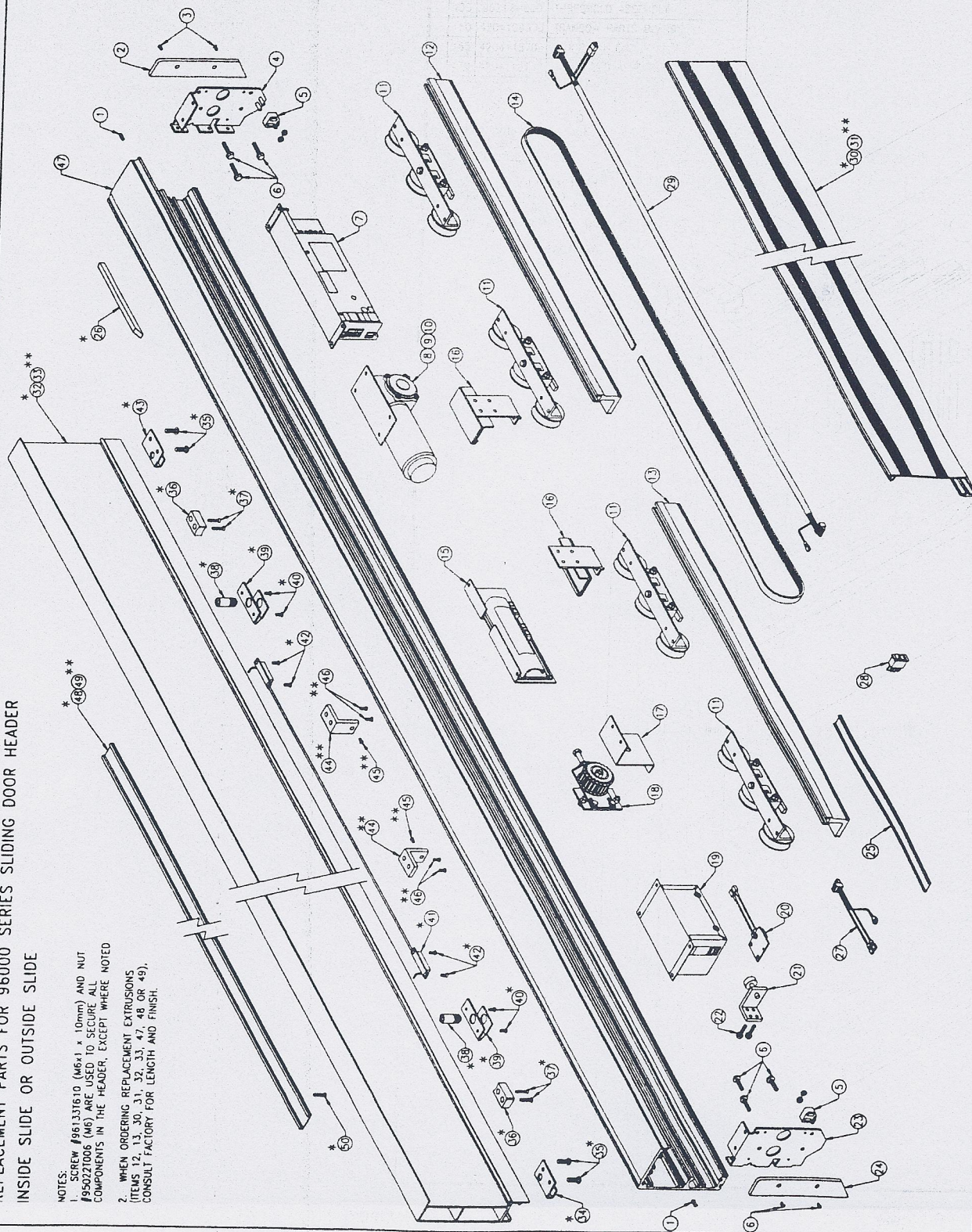
7350 W. Wilson Ave.
Harwood Heights, IL 60656

Toll Free: 1-800-543-4635
In Illinois: 708-867-7400
Automatic Sales FAX: 708-867-0291
www.doromatic.com

HEADER - INSIDE & OUTSIDE SLIDE

REPLACEMENT PARTS FOR 96000 SERIES SLIDING DOOR HEADER INSIDE SLIDE OR OUTSIDE SLIDE

- NOTES:
1. SCREW #961337610 (M6x1 x 10mm) AND NUT #950227006 (M6) ARE USED TO SECURE ALL COMPONENTS IN THE HEADER, EXCEPT WHERE NOTED
 2. WHEN ORDERING REPLACEMENT EXTRUSIONS (ITEMS 12, 13, 30, 31, 32, 33, 47, 48 OR 49), CONSULT FACTORY FOR LENGTH AND FINISH.



ITEM	PART No.	DESCRIPTION
1	96213-100	COVER BUMPER
2	96189-100	END CAP, RIGHT HAND
3	96076-600	END CAP SCREW
4	96122-000	END BRACKET, RIGHT HAND
5	96219-100	COVER LOCK
6	96077-600	HEADER MOUNT SCREW
7	96010-900	CONTROL BOX
8	96175-000	MOTOR & PLATE ASSEMBLY
9	96500-000	MOTOR & PLATE ASSEMBLY, PAL SAFE
10	96550-000	MOTOR & PLATE ASSEMBLY, PAL SECURE
11	96135-000	ROLLER ASSEMBLY
12	96289-1XX	ANGLE, LEFT HAND MACHINED
13	96288-1XX	ANGLE, RIGHT HAND MACHINED
14	4204106693	BEELING
15	96185-000	PENCIL BEAM ASSEMBLY
16	96110-000	BELT CLAMP ASSEMBLY
17	96316-600	TENSIONER COVER
18	96105-000	TENSIONER ASSEMBLY
19	96005-900	TRANSFORMER BOX
20	96173-000	TERMINAL BLOCK ASSEMBLY
21	96175-000	BUMPER STOP ASSEMBLY
22	961337614	M6x1 x 14mm HEX HEAD BOLT
23	96121-000	END BRACKET, LEFT HAND
24	96188-100	END CAP, LEFT HAND
25	96214-100	WIRE COVER
26	96022-100	TOP PINOT REMOVAL TOOL
27	96172-000	TRANSFORMER - SWITCH CABLE
28	76307-600	ROCKER SWITCH
29	961710000	TRANSFORMER - CONTROL CABLE
30	96246-1XX	COVER, BI-PART INSIDE SLIDE
31	96187-1XX	COVER, BI-PART OUTSIDE SLIDE
32	96276-1XX	EXTENSION, BI-PART INSIDE SLIDE
33	96236-1XX	EXTENSION, BI-PART OUTSIDE SLIDE
34	96176-100	PINOT BRACKET, LEFT HAND
35	4299100748	1/4-20 x 5/8 PHILLIPS TAPITE SCREW
36	4204100116	STOP BLOCK
37	4299100747	1/4-20 x 3/4 PHILLIPS FLAT HEAD SCREW
38	4204118246	BALL DETENT
39	4204120310	BALL DETENT BRACKET
40	4299100766	#10-24 x 3/4 SLOTTED PAN HEAD SCREW
41	96020-000	BREAKAWAY SWITCH ASSEMBLY
42	4299100789	#6-32 x 1/2 PHILLIPS ROUND HEAD SCREW
43	96177-100	PINOT BRACKET, RIGHT HAND
44	4204103028	FIXED PANEL BRACKET
45	4299100678	1/4-20 x 1/2 SLOTTED FLAT HEAD SCREW
46	4299100074	1/4-20 x 1/2 PHILLIPS ROUND HEAD SCREW
47	96243-1XX	HEADER, MACHINED
48	4204108816	SLIDE COVER, INSIDE SLIDE
49	4204104195	SLIDE COVER, OUTSIDE SLIDE
50	4299100213	1/4-20 FLAT HEAD SCREW

NOTE:
 * = USED ON INSIDE SLIDE ONLY
 ** = USED ON OUTSIDE SLIDE ONLY

95460

FRAME WITH TRANSOM - INSIDE SLIDE

ITEM	US 28	DESCRIPTION
3	66414-1XX	GLASS STOP, TRANSOM
4	66416-1XX	GLASS STOP, TRANSOM
5	66415-1XX	GLASS STOP, TRANSOM
6	66417-1XX	GLASS STOP, TRANSOM
9	4204113931	GLASS STOP RUBBER
100	96389-1XX	JAMB TUBE, MACHINED (GROOVED)
105	96389-1XX	JAMB TUBE, MACHINED (GROOVED)
110	96393-1XX	HORIZONTAL JAMB TUBE, MACHINED
115	96391-1XX	VERTICAL TRANSOM TUBE, MACHINED
120	96216-1XX	JAMB TUBE FILLER
125	96317-100	THRESHOLD FILLER
135	96212-000	THRESHOLD ASSEMBLY
160	4204109373	TRANSOM PARTS BOARD
165	4204118709	FLOOR GUIDE
170	4204118748	THRESHOLD ASSEMBLY

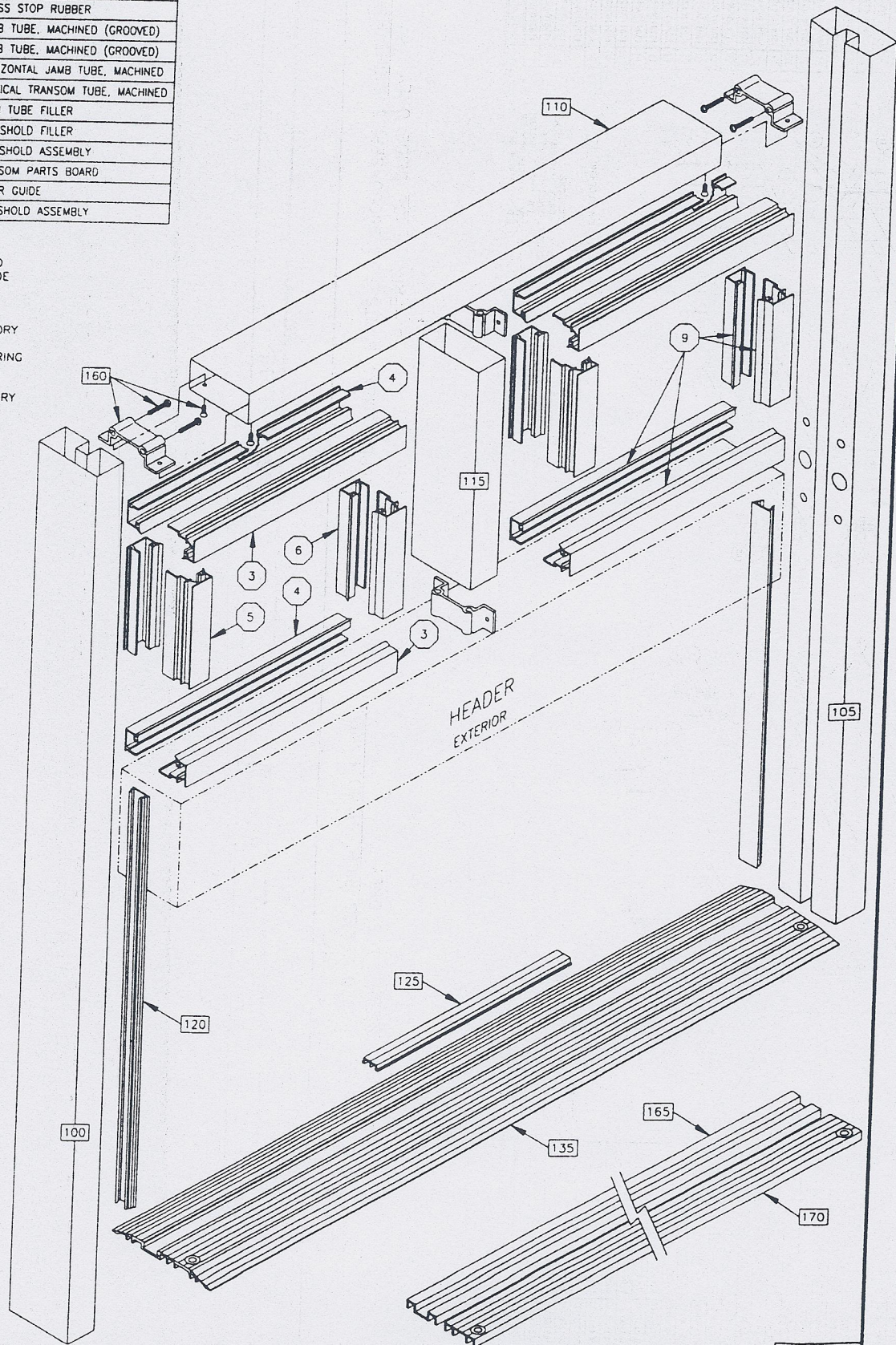
REPLACEMENT PARTS FOR 96000 SERIES SLIDING DOOR FRAME BI-PART INSIDE SLIDE WITH TRANSOM

NOTES:

1. ITEMS 165 AND 170 ARE FOR INSIDE SLIDE RECESSED THRESHOLD ONLY.

2. CONSULT FACTORY FOR LENGTH AND FINISH WHEN ORDERING ALL EXTRUSIONS.

3. CONSULT FACTORY FOR APPLICATIONS WITHOUT TRANSOM.



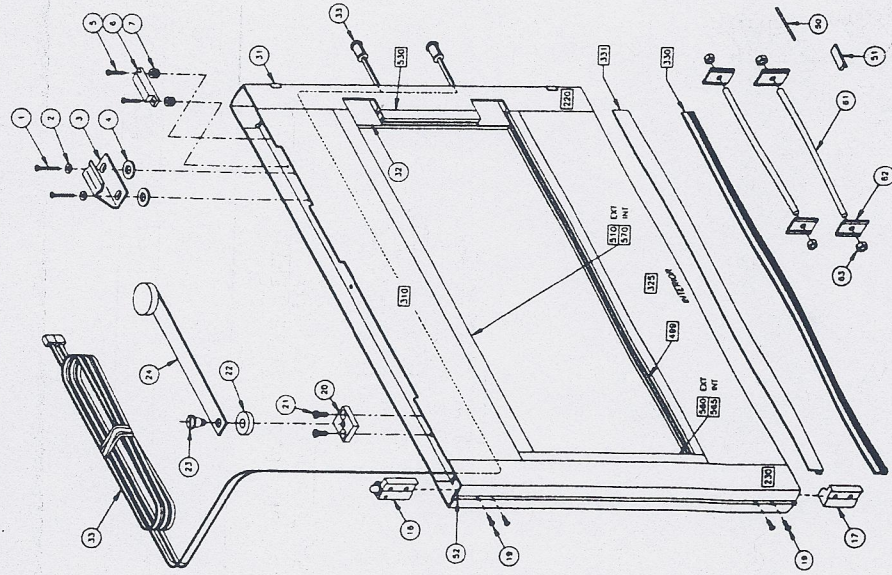
96461

RIGHT HAND DOOR AND PANEL - INSIDE SLIDE

REPLACEMENT PARTS FOR 96000 SERIES RIGHT HAND PANEL BI-PART INSIDE SLIDE ONLY

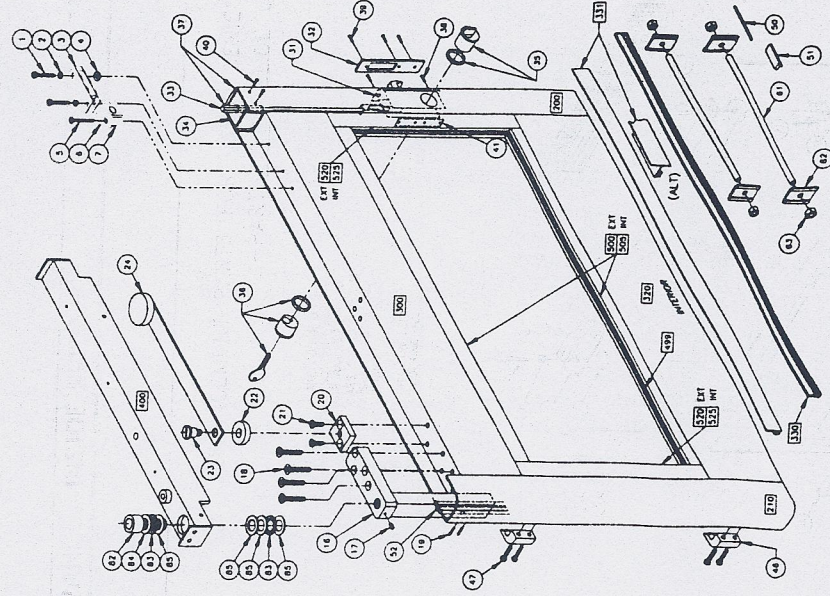
ITEM	PART NO.	DESCRIPTION
1	4299100766	#10-24 PAN HEAD SCREW
2	4299100489	#10 LOCK WASHER
3	4204120359	CATCH BRACKET
4	4299100100	5/16 FLAT WASHER
5	4299100068	#8-32 SELF-TAP SCREW
6	4201102854	MAGNET - #37 REED
7	4204102005	SPACER
16	4204109771	TOP PHOTO ASSEMBLY, RH PANEL
17	4204109772	BOTTOM PHOTO ASSEMBLY, RH PANEL
19	4299100616	#10-32 THREAD FORMING SCREW
20	4204102244	SPACER BLOCK
21	4299100747	1/4-20 THREAD FORMING SCREW
22	4204100063	SPACER
23	4204100147	SHOULDER SCREW
24	4204100674	PANEL LIMIT ARM
31	4204109798	CORNER PROTECTOR
32	4204101929	BACK UP PLATE
36	36193-600	TRANSMITTER CABLE - RED
50	4204115034	GLASS STOP ANCHOR
51	4204100709	SETTING BLOCK BAG
52	4204106653	WEATHERSTRIP, 437 x 470
61	4204100658	3/8 ROD
62	4204100703	BACK UP PLATE
63	4204100702	3/8-16 SEUS NUT
220	4204118028	LOCK STILE, BI-PART RH PANEL
230	4204100801	LAR PANEL PHOTO STILE W/S
310	4204120674	TOP RAIL, RH PANEL W/S
320	4204110415	LOWER RAIL W/S
330	4204103960	SWEEP
331	4204110400	SWEEP HOLDER
499	4204102801	RUBBER WEATHERSTRIP
500	4204110810	GLASS STOP, 5/8 HORIZONTAL
501	4204108866	GLASS STOP, 5/8 VERTICAL
502	4204108863	GLASS STOP, 5/8 HORIZONTAL
503	4204108865	GLASS STOP, 5/8 VERTICAL
570	4204101948	GLASS STOP, 5/8 HORIZONTAL

NOTES:
1. PARTS LISTED ARE FOR A US28 RIGHT HAND PANEL (SD) WITH NARROW STILES, 3-1/2" TOP RAIL, 5" BOTTOM RAIL AND 5/8" GLASS STOPS FOR 1/4" GLASS ONLY. CONSULT FACTORY FOR ANY OTHER APPLICATIONS.
2. CONSULT FACTORY FOR LENGTH EXTRUSIONS.
3. AND FINISH WHEN ORDERING ALL EXTRUSIONS.



REPLACEMENT PARTS FOR 96000 SERIES RIGHT HAND DOOR BI-PART INSIDE SLIDE ONLY

NOTES:
1. PARTS LISTED ARE FOR A US28 RIGHT HAND DOOR (SD) WITH NARROW STILES, 3-1/2" TOP RAIL, 5" BOTTOM RAIL AND 5/8" GLASS STOPS FOR 1/4" GLASS ONLY. CONSULT FACTORY FOR ANY OTHER APPLICATIONS.
2. CONSULT FACTORY FOR LENGTH EXTRUSIONS.
3. AND FINISH WHEN ORDERING ALL EXTRUSIONS.



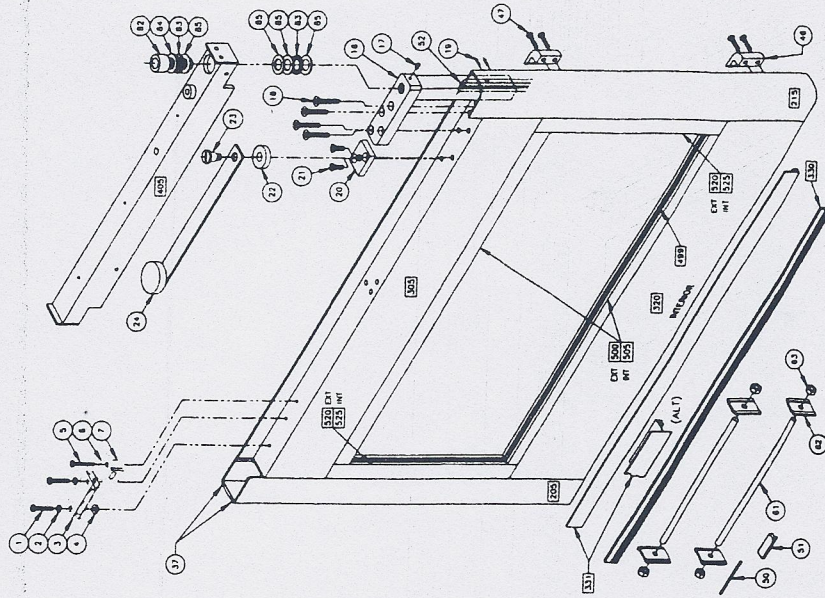
ITEM	PART NO.	DESCRIPTION
1	4299100766	#10-24 THREAD FORMING SCREW
2	4299100722	LOCK WASHER
3	4204101998	MAGNET
4	4204102005	SPACER
5	4299100778	#10-24 SELF-TAP SCREW
6	4204100708	BRACKET CLIP
7	4204100707	HANGER BLOCK
16	4204120520	COMPOSITE ARM ASSEMBLY
17	4299100690	1/4-20 ALLEN SET SCREW
18	4204100655	5/16-24 SOCKET CAP SCREW
19	4299100165	1/4-20 FLAT HEAD SCREW
20	4204102521	SPACER BLOCK
21	4299100002	1/4-20 FLAT HEAD SCREW
22	4204100063	SPACER
23	4204100147	SHOULDER SCREW
24	4204100666	DOOR LIMIT ARM
31	4204116070	HEAD LOCK ASSEMBLY
32	4204117089	FACE PLATE
33	4204102225	THRESHOLD BOLT
34	4204102224	ROD GUIDE
35	4204101382	FLANG TURN
36	4204101170	LOCKING CYLINDER
37	4204100898	WEATHERSTRIP
38	4299100716	#10-32 FLAT HEAD SCREW
39	4299101312	#8-32 FLAT HEAD SCREW
40	4299100753	#8-32 FLAT HEAD SCREW
41	4204100118	DOOR LOCK SHIM
46	4204101330	HOOK LOCK
47	4299100747	1/4-20 THREAD FORMING SCREW
50	4204115034	GLASS STOP ANCHOR
51	4204100709	SETTING BLOCK BAG
52	4204106653	WEATHERSTRIP, 437 x 470
61	4204100658	3/8 ROD
62	4204100703	BACK UP PLATE
63	4204100702	3/8-16 SEUS NUT
82	4204101992	3/4-10 SOCKET CAP SCREW
83	4204100087	NEEDLE THRUST BEARING
84	4204100888	CARRIER THRUST RACE WASHER
85	4204100088	THRUST RACE WASHER
200	4204118330	LOCK STILE, RH BI-PART W/LOCK
210	4204102030	PHOTO STILE, RH DOOR W/S
300	4204100418	TOP RAIL, RH DOOR
320	4204110415	LOWER RAIL W/S
330	4204103960	SWEEP
331	4204110400	SWEEP HOLDER
400	86296-000	CARRIER ASSEMBLY, RH BI-PART
499	4204102801	WEATHERSTRIP
500	420410810	GLASS STOP, 5/8 HORIZONTAL
502	4204108863	GLASS STOP, 5/8 HORIZONTAL
520	4204108865	GLASS STOP, 5/8 VERTICAL
525	4204100845	GLASS STOP, 5/8 VERTICAL

96462

LEFT HAND DOOR AND PANEL - INSIDE SLIDE

REPLACEMENT PARTS FOR 96000 SERIES LEFT HAND DOOR BI-PART INSIDE SLIDE ONLY

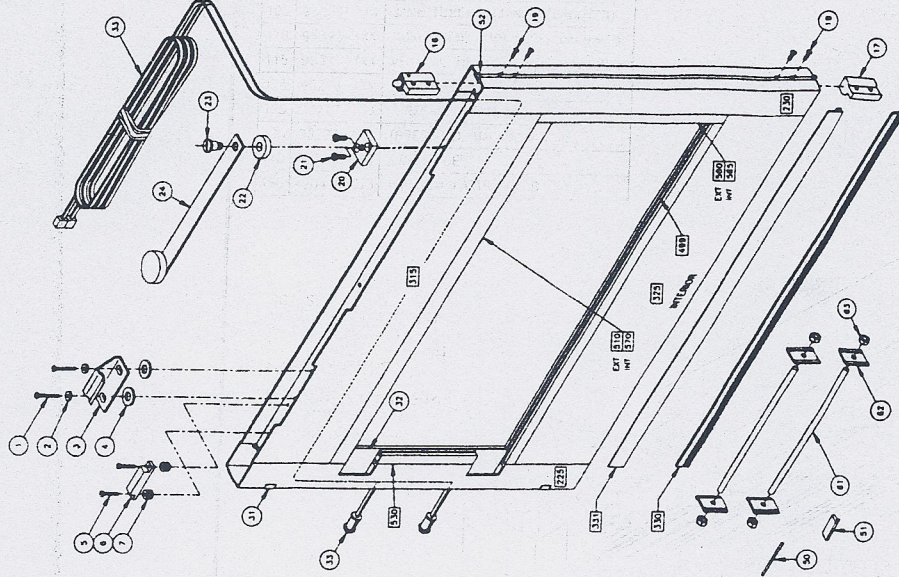
NOTES:
1. PARTS LISTED ARE FOR A US28 LEFT HAND DOOR WITH 1/4" NARROW STILES, 3-1/2" TOP RAIL, 5" RAIL AND 5/8" GLASS STOPS FOR 1/4" GLASS ONLY. CONSULT FACTORY FOR ANY OTHER APPLICATIONS.
2. CONSULT FACTORY FOR LENGTH AND FINISH WHEN ORDERING ALL EXTRUSIONS.



ITEM	PART No.	DESCRIPTION
1	4299100700	#10-24 THREAD FORMING SCREW
2	4299100722	LOCK WASHER
3	4204101936	MAGNET
4	4204102005	SPACER
5	4299100779	#10-24 SELF-TAP SCREW
6	4204100706	BRACKET CLIP
7	4204100707	HANGER BLOCK
16	4204102020	COMPOSITE ARM ASSEMBLY
17	4299100690	1/4-20 ALLEN SET SCREW
18	4204100653	5/16-24 SOCKET CAP SCREW
19	4299100615	1/4-20 FLAT HEAD SCREW
20	4204102021	SPACER BLOCK
21	4299100002	1/4-20 FLAT HEAD SCREW
22	4204100603	SPACER
23	4204100117	SHOULDER SCREW
24	4204100666	DOOR LIMIT ARM
37	4204100898	WEATHERSTRIP
46	4204101930	HOOK LOCK
47	4299100747	1/4-20 THREAD FORMING SCREW
50	4204115034	GLASS STOP ANCHOR
51	4204100709	SETTING BLOCK BAG
52	4204100653	WEATHERSTRIP, 437 x .470
61	4204100658	3/8 ROD
82	4204100703	BACK UP PLATE
83	4204100702	3/8-16 SEKS NUT
84	4204101992	3/4-10 SOCKET CAP SCREW
85	4204100087	WEDGE THRUST BEARING
86	4204100606	CARRIER THRUST RACE WASHER
87	4204100088	THRUST RACE WASHER
205	4204116954	LOCK STILE, LH B-PART
215	4204102032	PHOT STILE, LH DOOR N/S
305	4204100952	TOP RAIL, LH DOOR
320	4204101415	LOWER RAIL, N/S
330	4204102090	SWEEP
331	4204101040	SWEEP HOLDER
405	98282-00X	CARRIER ASSEMBLY, LH B-PART
499	4204102401	WEATHERSTRIP
500	4204101810	GLASS STOP, 5/8 HORIZONTAL
505	4204100953	GLASS STOP, 5/8 VERTICAL
525	4204100645	GLASS STOP, 5/8 HORIZONTAL
535	4204100645	GLASS STOP, 5/8 VERTICAL

REPLACEMENT PARTS FOR 96000 SERIES LEFT HAND PANEL BI-PART INSIDE SLIDE ONLY

NOTES:
1. PARTS LISTED ARE FOR A US28 LEFT HAND DOOR WITH 1/4" NARROW STILES, 3-1/2" TOP RAIL, 5" RAIL AND 5/8" GLASS STOPS FOR 1/4" GLASS ONLY. CONSULT FACTORY FOR ANY OTHER APPLICATIONS.
2. CONSULT FACTORY FOR LENGTH AND FINISH WHEN ORDERING ALL EXTRUSIONS.



ITEM	PART No.	DESCRIPTION
1	4299100766	#10-24 PAN HEAD SCREW
2	4299100489	#10 LOCK WASHER
3	4204102009	CATCH BRACKET
4	4299100100	5/16 FLAT WASHER
5	4299100606	#8-32 SELF-TAP SCREW
6	4204102854	MAGNET - #37 REED
7	4204102005	SPACER
16	4204102770	TOP PHOTO ASSEMBLY, LH PANEL
17	4204102773	BOTTOM PHOTO ASSEMBLY, LH PANEL
19	4299100615	#10-24 FLAT HEAD SCREW
20	4204100944	SPACER BLOCK
21	4299100747	1/4-20 THREAD FORMING SCREW
22	4204100603	SPACER
23	4204100117	SHOULDER SCREW
24	4204100824	PANEL LIMIT ARM
31	4204100798	CORNER PROTECTOR
32	4204101929	BACK UP PLATE
33	98192-600	RECEIVER CABLE - BLUE
50	4204115034	GLASS STOP ANCHOR
51	4204100709	SETTING BLOCK BAG
52	4204100653	WEATHERSTRIP, 437 x .470
61	4204100658	3/8 ROD
82	4204100703	BACK UP PLATE
83	4204100702	3/8-16 SEKS NUT
225	4204118034	LOCK STILE, B-PART LH PANEL
230	4204100803	L&R PANEL PHOTO STILE N/S
315	4204102075	TOP RAIL, LH PANEL N/S
325	4204101415	LOWER RAIL N/S
330	4204105960	SWEEP
331	4204101040	SWEEP HOLDER
499	4204102401	RUBBER WEATHERSTRIP
510	4204101810	GLASS STOP, 5/8 HORIZONTAL
520	4204101966	GLASS STOP, 5/8 VERTICAL
540	4204100665	GLASS STOP, 5/8 VERTICAL
565	4204100645	GLASS STOP, 5/8 VERTICAL
570	4204101948	GLASS STOP, 5/8 HORIZONTAL

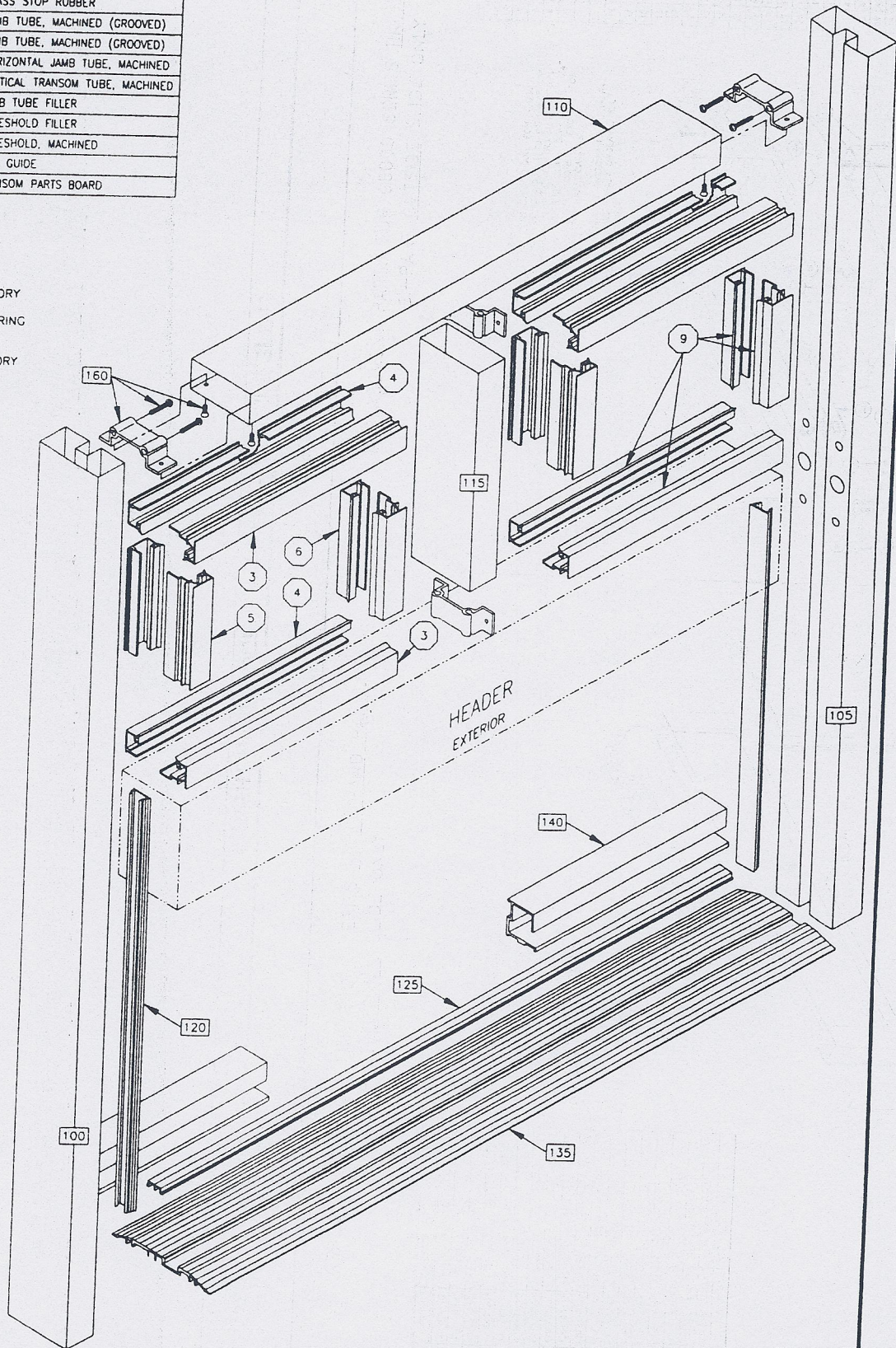
96463

FRAME WITH TRANSOM - OUTSIDE SLIDE

ITEM	US 28	DESCRIPTION
3	66414-1XX	GLASS STOP, TRANSOM
4	66416-1XX	GLASS STOP, TRANSOM
5	66415-1XX	GLASS STOP, TRANSOM
6	66417-1XX	GLASS STOP, TRANSOM
9	4204113931	GLASS STOP RUBBER
100	96389-1XX	JAMB TUBE, MACHINED (GROOVED)
105	96389-1XX	JAMB TUBE, MACHINED (GROOVED)
110	96393-1XX	HORIZONTAL JAMB TUBE, MACHINED
115	96391-1XX	VERTICAL TRANSOM TUBE, MACHINED
120	96216-1XX	JAMB TUBE FILLER
125	96217-100	THRESHOLD FILLER
135	96222-100	THRESHOLD, MACHINED
140	4204106107	SIDE GUIDE
160	4204109373	TRANSOM PARTS BOARD

REPLACEMENT PARTS FOR 96000 SERIES SLIDING DOOR FRAME BI-PART OUTSIDE SLIDE WITH TRANSOM

- NOTES:
1. CONSULT FACTORY FOR LENGTH AND FINISH WHEN ORDERING ALL EXTRUSIONS.
 2. CONSULT FACTORY FOR APPLICATIONS WITHOUT TRANSOM.



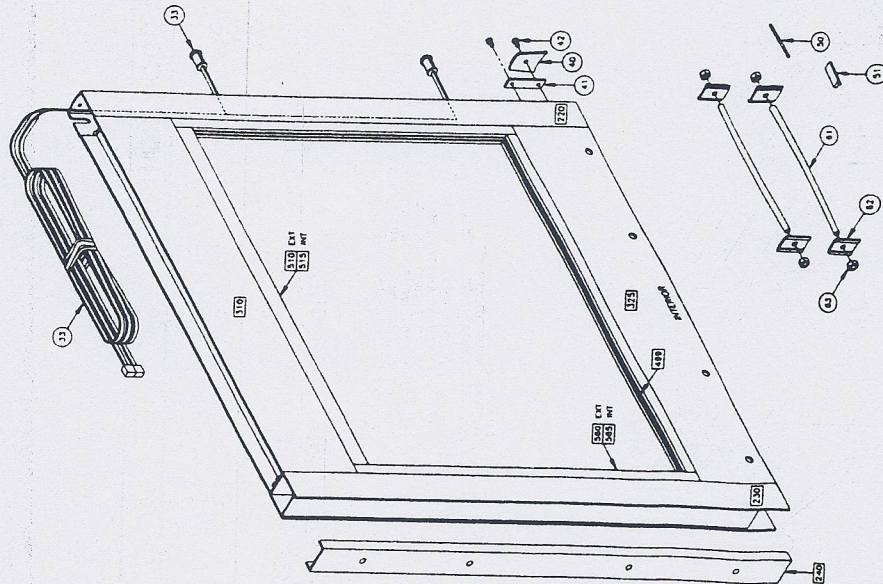
96464

RIGHT HAND DOOR AND PANEL - OUTSIDE SLIDE

REPLACEMENT PARTS FOR 96000 SERIES RIGHT HAND PANEL
BI-PART OUTSIDE SLIDE ONLY

ITEM	PART No.	DESCRIPTION
33	96193-500	TRANSMITTER CABLE - RED
40	4204120567	END CAP
41	4204120564	END CAP BRACKET
42	4299101302	1/8-32 PAN HEAD SCREW
50	4204115034	GLASS STOP ANCHOR
51	4204100709	SETTING BLOCK BAG
61	4204100558	3/8 ROD
82	4204100703	BACK UP PLATE
83	4204100702	3/8-16 SEAS NUT
220	4204118060	LOCK STILE, BI-PART RH PANEL (0)
230	4204104610	LAR PANEL PHOTO STILE N/S
240	4204100684	ASTRICAL PANEL
310	4204101618	TOP RAIL PANEL N/S
325	4204104563	BOTTOM RAIL FIXED PANEL N/S
499	4204102601	RUBBER WEATHERSTRIP
510	4204110810	GLASS STOP 5/8 HORIZONTAL
515	4204100670	GLASS STOP 5/8 HORIZONTAL
560	4204110845	GLASS STOP 5/8 VERTICAL
565	4204100645	GLASS STOP 5/8 VERTICAL

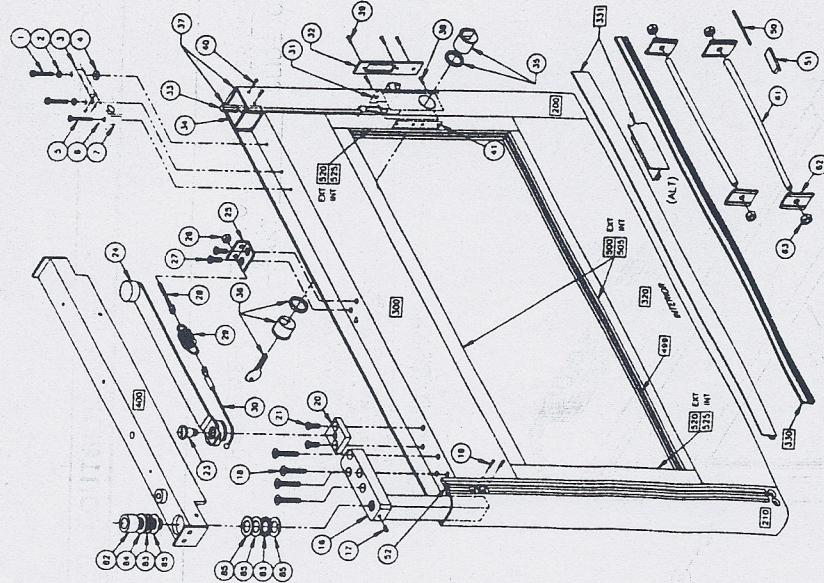
NOTES:
1. PARTS LISTED ARE FOR A US28 RIGHT HAND PANEL WITH 1/2" TOP RAIL, 5" BOTTOM RAIL AND 5/8" GLASS STOPS FOR 1/4" GLASS ONLY. CONSULT FACTORY FOR ANY OTHER APPLICATIONS.
2. CONSULT FACTORY FOR LENGTH AND FINISH WHEN ORDERING ALL EXTRUSIONS.



REPLACEMENT PARTS FOR 96000 SERIES RIGHT HAND DOOR
BI-PART OUTSIDE SLIDE ONLY

ITEM	PART No.	DESCRIPTION
1	4299100760	1/0-24 THREAD FORMING SCREW
2	4299100772	LOCK WASHER
3	4204101986	WASHER
4	4204102005	SPACER
5	4299100778	1/0-24 SELF-LAP SCREW
6	4204100768	BRACKET CLIP
7	4204100707	HANGER BLOCK
16	4204120520	COMPOSITE ARM ASSEMBLY
17	4299100690	1/4-20 ALLEN SET SCREW
18	4204100655	5/16-24 SOCKET CAP SCREW
19	4299100165	1/4-20 FLAT HEAD SCREW
20	4204120521	SPACER BLOCK
21	4299100002	1/4-20 FLAT HEAD SCREW
23	4204106609	SHOULDER SCREW DOOR PANEL
24	4204100771	SPRING CLOSER ARM, RIGHT HAND
25	4204104920	SPRING BRACKET
26	4299100258	1/4-20 HEX NUT
27	4299100747	1/4-20 THREAD FORMING SCREW
28	4204104925	SPRING DOOR SCREW
29	4204104931	EXTENSION SPRINGS
30	4204104922	CABLE ASSEMBLY
31	4204116070	DEAD LOCK ASSEMBLY
32	4204117089	FACE PLATE
33	4204102225	THRESHOLD BOLT
34	4204102224	ROD GUIDE
35	4204101382	THUMB TURN
36	4204101170	LOCKING CYLINDER
37	4204108898	WEATHERSTRIP
38	4299100776	1/0-32 FLAT HEAD SCREW
39	4299101312	1/0-32 FLAT HEAD SCREW
40	4299100753	1/0-32 FLAT HEAD SCREW
41	4204100118	DOOR LOCK SHIM
50	4204115034	GLASS STOP ANCHOR
51	4204100709	SETTING BLOCK BAG
52	4204106653	WEATHERSTRIP, 437 x 470
61	4204100658	1/8 ROD
62	4204100703	BACK UP PLATE
83	4204100702	3/8-16 SEAS NUT
82	4204101992	3/4-10 SOCKET CAP SCREW
83	4204100087	NEEDLE THRUUST BEARING
84	4204100688	CARRIER THRUST RACE WASHER
85	4204100688	THRUST RACE WASHER
200	4204118832	LOCK STILE, RH B-PART
210	4204105002	PHOTO STILE, RH DOOR N/S
300	4204100119	TOP RAIL, RH DOOR
320	4204100115	LOWER RAIL, N/S
330	4204105860	SLEEPER
331	4204110000	SLEEP HOLDER
400	96296-001	CARRIER ASSEMBLY, RH B-PART
499	4204102601	WEATHERSTRIP
500	4204110810	GLASS STOP 5/8 HORIZONTAL
505	4204100670	GLASS STOP 5/8 HORIZONTAL
520	4204110845	GLASS STOP 5/8 VERTICAL
535	4204100645	GLASS STOP 5/8 VERTICAL

NOTES:
1. PARTS LISTED ARE FOR A US28 RIGHT HAND DOOR (S) WITH 1/2" TOP RAIL, 5" BOTTOM RAIL AND 5/8" GLASS STOPS FOR 1/4" GLASS ONLY. CONSULT FACTORY FOR ANY OTHER APPLICATIONS.
2. CONSULT FACTORY FOR LENGTH AND FINISH WHEN ORDERING ALL EXTRUSIONS.

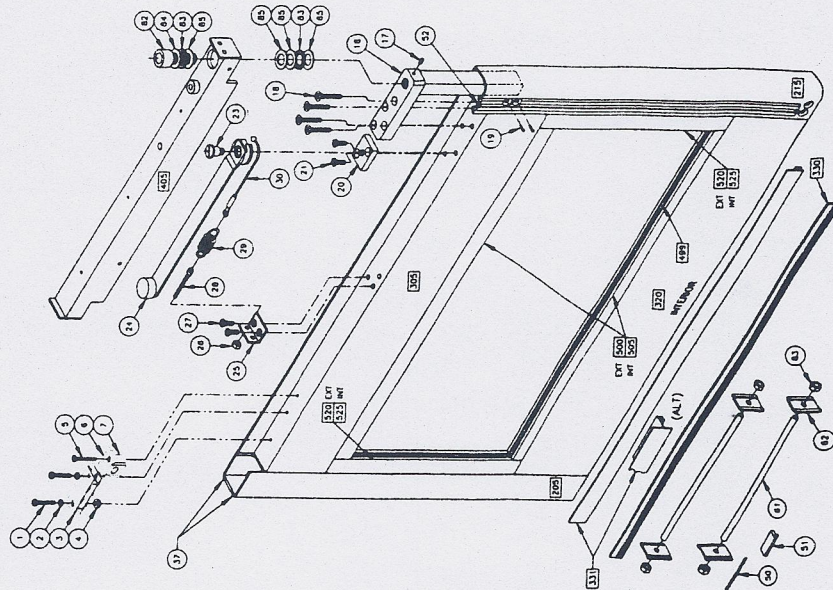


LEFT HAND DOOR AND PANEL - OUTSIDE SLIDE

REPLACEMENT PARTS FOR 96000 SERIES LEFT HAND DOOR BI-PART OUTSIDE SLIDE ONLY

NOTES:
1. PARTS LISTED ARE FOR A US28 LEFT HAND DOOR (STANDARD) WITH NARROW STILES, 3-1/2" TOP RAIL, 5" BOTTOM RAIL AND 5/8" GLASS STOPS FOR 1/4" GLASS ONLY. CONSULT FACTORY FOR ANY OTHER APPLICATIONS.
2. CONSULT FACTORY FOR LENGTH AND FINISH WHEN ORDERING ALL EXTRUSIONS.

ITEM	PART No.	DESCRIPTION
1	4299100780	1/10-24 THREAD FORMING SCREW
2	4299100722	LOCK WASHER
3	4204101998	MAGNET
4	4204102005	SPACER
5	4299100779	1/10-24 SELF-TAP SCREW
6	4204100708	BRACKET CLIP
7	4204100707	HANGER BLOCK
16	4204100520	COMPOSITE ANGLE ASSEMBLY
17	4299100690	1/4-20 ALLEN SET SCREW
18	4204100655	5/16-24 SOCKET CAP SCREW
19	4299100165	1/4-20 FLAT HEAD SCREW
20	4204100571	SPACER BLOCK
21	4299100002	1/4-20 FLAT HEAD SCREW
22	4204100609	SHOULDER SCREW, DOOR PANEL
24	4204100610	DOOR LIMIT ARM
25	4204100920	SPRING BRACKET
26	4299100256	1/4-20 HEX NUT
27	4299100747	1/4-20 THREAD FORMING SCREW
28	4204100492	SPRING DRAW SCREW
30	4204100492	EXTENSION SPRINGS
31	4204100492	CABLE ASSEMBLY
37	4204100898	WEATHERSTRIP
50	4204100434	GLASS STOP ANCHOR
51	4204100709	SETTING BLOCK BAG
52	4204100653	WEATHERSTRIP, 131 x 470
61	4204100658	3/8 ROD
62	4204100703	BACK UP PLATE
63	4204100702	3/8-16 SEUS NUT
82	4204101992	3/4-10 SOCKET CAP SCREW
83	4204100087	NEEDLE THRUST BEARING
84	4204100686	CARRIER THRUST BEARING
85	4204100688	THRUST RACE WASHER
205	4204100544	LOCK STILE, LH BI-PART N/S
213	4204100500	PHOT STILE, LH BI-PART N/S
305	4204100522	TOP RAIL, LH DOOR
320	4204100415	LOWER RAIL, N/S
330	4204100980	SWEEP
331	4204100400	SWEEP HOLDER
405	96282-001	CARRIER ASSEMBLY, LH BI-PART
499	4204102001	WEATHERSTRIP
500	4204100810	GLASS STOP, 5/8 HORIZONTAL
505	4204100853	GLASS STOP, 5/8 HORIZONTAL
520	4204100850	GLASS STOP, 5/8 VERTICAL
525	4204100845	GLASS STOP, 5/8 VERTICAL



REPLACEMENT PARTS FOR 96000 SERIES LEFT HAND PANEL BI-PART OUTSIDE SLIDE ONLY

NOTES:
1. PARTS LISTED ARE FOR A US28 LEFT HAND PANEL (STANDARD) WITH NARROW STILES, 3-1/2" TOP RAIL, 5" BOTTOM RAIL AND 5/8" GLASS STOPS FOR 1/4" GLASS ONLY. CONSULT FACTORY FOR ANY OTHER APPLICATIONS.
2. CONSULT FACTORY FOR LENGTH AND FINISH WHEN ORDERING ALL EXTRUSIONS.

ITEM	PART No.	DESCRIPTION
33	96192-600	RECEIVER CABLE - BLUE
40	4204100587	END CAP
41	4204100584	END CAP BRACKET
42	4299101302	1/8-32 PAN HEAD SCREW
50	4204100524	GLASS STOP ANCHOR
51	4204100709	SETTING BLOCK BAG
61	4204100658	3/8 ROD
62	4204100703	BACK UP PLATE
63	4204100702	3/8-16 SEUS NUT
225	4204100666	LOCK STILE, BI-PART LH PANEL (0)
235	4204100616	LH PANEL PHOTO STILE N/S
240	4204100684	ASTRACAL PANEL
310	4204101648	TOP RAIL, PANEL N/S
325	4204100589	BOTTOM RAIL, FILLED PANEL N/S
499	4204102001	RUBBER WEATHERSTRIP
510	4204100810	GLASS STOP, 5/8 HORIZONTAL
515	4204100870	GLASS STOP, 5/8 HORIZONTAL
580	4204100850	GLASS STOP, 5/8 VERTICAL
585	4204100845	GLASS STOP, 5/8 VERTICAL

